



UTM
UNIVERSITI TEKNOLOGI MALAYSIA

FACULTY OF CIVIL ENGINEERING

**SESSION
20232024**



UNDERGRADUATE ACADEMIC GUIDELINES

INNOVATING SOLUTION

All rights reserved. This publication is protected by Copyright and permission should be obtained from the publisher prior to any reproduction, storage in a retrieval system, or transmissions in any form or by any means, electronic, mechanical, photocopying, recording or likewise. For information regarding permission(s) write to:

Dean

UTM – Faculty of Civil Engineering

Universiti Teknologi Malaysia

81310 UTM Johor Bahru, Johor

Telephone : 07 – 553 1500

Email : dekan@fka.utm.my

Website : civil.utm.my

This book contains brief information about Full-time Undergraduate Degree Programme in Civil Engineering at the UTM- Faculty of Civil Engineering Universiti Teknologi Malaysia. Detailed information on the academic matter can be obtained from the following documents:

UTM Prospectus

UTM Academic Regulations

The contents of this book are accurate at the time of printing. Any amendments or clarification is subject to the discretion of the UTM-Faculty of Civil Engineering, Universiti Teknologi Malaysia.

Academic guidelines undergraduate degree programme for session 2023/2024 UTM-Faculty of Civil Engineering

Published by:

Faculty of Civil Engineering,

Universiti Teknologi Malaysia (UTM)

81310 Johor Bahru Johor, MALAYSIA

T: 07-5531581 F: 07-5566157

Edited by:

Assoc. Prof. Ir. Ts. Dr. Mohamad Hidayat Bin Jamal

Assoc. Prof. Dr. Rosli Bin Noor Mohamed

Dr. Nor Fazlin Binti Zamri

Dr. Faridahanim Binti Ahmad

Ts. Dr. Muhammad Farhan Bin Zolkepli

Ir. Kamaliah Binti Mohd Saha

Dr. Siti Nur Fatimah Binti Moideen

Dr. Nurul Syahira Binti Mohammad Harmay

Table of Contents

FOREWORD BY THE DEAN.....	1
1 INTRODUCTION.....	2
1.1 UTM – Faculty of Civil Engineering.....	2
1.2 Mission, Vision & Motto.....	3
1.3 Facts And Figures.....	3
2 ORGANISATIONAL STRUCTURE.....	4
2.1 Management Committee.....	4
2.2 Department in Faculty of Civil Engineering.....	5
2.3 Centre Of Excellence.....	6
3 FACILITIES.....	7
3.1 Lecture Theatres, Halls and Classrooms.....	7
3.2 Laboratories.....	7
3.3 IT Facilities.....	7
3.4 Resource Center and student lounge room.....	7
4 PROGRAMME OF STUDY.....	8
4.1 Programme Specification.....	8
4.1.1 General.....	8
4.1.2 Entry Requirements.....	9
4.1.3 Programme Educational Objectives (PEO).....	11
4.1.4 Programme Learning Outcomes (PLO).....	11
4.1.5 Mapping Program Outcomes (PLO), Complex Problems (WP), Complex Engineering Activities (EA) and Knowledge Profiles (WK).....	12
4.1.6 Classification of Courses.....	22
4.1.7 Programme Structures, Curriculums and Award Requirements.....	22
4.2 Our Uniqueness.....	24
4.3 Career Prospects and Career Path.....	25
4.4 Professional Skills Certificate (PSC).....	25
4.5 Civil Engineering Exit Test (CEET).....	25
4.6 Facilities Available.....	26
4.7 Supports for Students and Their Learning.....	26
4.8 Methods for Evaluating and Improving the Quality and Standards of Teaching and Learning Mechanisms.....	27
4.9 Students' Academic Assessment.....	29
5 SEMESTER SYSTEM RULES AND GUIDELINES.....	30
5.1 Academic Advisory System and Role of Students.....	30
5.2 Programme Registration Guidelines.....	30
5.3 Course Registration Guidelines.....	31
5.4 Course Code.....	32
5.5 Credit Scheme.....	32
5.5.1 Course Credit.....	32
5.5.2 Credit Load For Each Semester.....	33
5.5.3 Credit Earned.....	33
5.5.4 Credit Counted.....	33

5.5.5	Credit Transfer	33
5.6	Grading System	34
5.7	Assessment System	37
5.7.1	Attendance Requirement.....	37
5.7.2	Assessment Scheme	37
5.7.3	Final Examination	38
5.7.4	Special Examination.....	38
5.7.5	Appeal On the Results	38
5.8	Conferment Result	38
5.8.1	Improving Academic Performance.....	40
5.9	Computation of GPA and CGPA.....	40
5.10	Status of Students' Academic Year	42
5.11	Award and Recognition	42
5.12	Deferment of Study	42
5.13	Students' Code of Attire	43
5.14	General Provisions.....	43
6	CURRICULUM AND SYLLABUS	44
6.1	Area of Study.....	44
6.2	Curriculum of Bachelor of Civil Engineering with Honours.....	44
6.2.1	Course Menu for Group 1	45
6.2.2	Course Menu for Group 2	49
6.3	List of Faculty's Elective Courses.....	53
6.3.1	Elective Courses	53
6.3.2	PRISMS Elective Courses.....	54
6.4	Synopsis of Core Courses	55
6.4.1	First Year.....	55
6.4.2	Second Year	57
6.4.3	Third Year	59
6.4.4	Fourth Year	62
6.5	Synopsis of Faculty's Elective Courses	64
6.6	Synopsis of Faculty's PRISMS Elective Courses	69
7	UNIVERSITY'S GENERAL COURSES	76
7.1	Introduction.....	76
7.2	Cluster 1: Malaysia Core Value	76
7.3	Cluster 2: Value & Identity	76
7.4	Cluster 3: Global Citizen.....	77
7.5	Cluster 4: Communication Skill	77
7.6	Cluster 5: Enterprising Skill	77
7.7	Summary of Total Credit Hours for University's General Courses.....	77
7.8	Mathematics Core Courses (SSCE).....	78
7.9	Co-Curricular Courses	78
7.9.1	Background	78
7.9.2	Requirements for Co-curricular Course Registration	78

7.9.3	Implementation of Co-curricular Courses	79
7.10	Synopsis Of General Courses	80
7.10.1	Cluster 1: Malaysia Core Value.....	80
7.10.2	Cluster 2: Value and Identity	80
7.10.3	Cluster 3: Global Citizen	81
7.10.4	Cluster 4: Communication Skill	81
7.10.5	Cluster 5: Enterprising Skill	81
7.10.6	Mathematics Course Compulsory Courses	82
8	APPENDIX: GRADUATION CHECKLIST	83
9	ACKNOWLEDGEMENT	85

FOREWORD BY THE DEAN



Assalamualaikum wrt. wbt. and Greetings,

I am delighted to warmly welcome you on behalf of the Faculty of Civil Engineering (FKA) at Universiti Teknologi Malaysia. This invaluable opportunity that you gained to start your endeavors in FKA is truly exceptional, given the fact that our faculty has maintained its reputation as a top 100 Civil Engineering Faculty based on QS World Ranking Agency and one of the top Civil Engineering faculties in Malaysia.

At FKA, we are committed to providing you with a supportive and stimulating learning environment, and we look forward to accompanying you on your journey to becoming a successful civil engineer.

The Academic Guidelines handbook serves as a valuable tool to help students navigate their academic journey at FKA. It aims to promote transparency, clarity and consistency in academic administration and to empower students to take ownership of their academic success. By familiarizing themselves with the information and guidelines provided in this handbook, students can make informed decisions, meet academic requirements and effectively engage with the faculty and university community.

Thank you for choosing the Faculty of Civil Engineering at UTM for your academic and professional development.

Welcome aboard, and let's make the most of this journey ahead of us.

Thank you, Wassalam.

Associate Professor Dr. Suhaimi bin Abu Bakar

Dean

Faculty of Civil Engineering

Universiti Teknologi Malaysia



UTM-FACULTY OF CIVIL ENGINEERING

UTM's establishment is in line with the development of the civil engineering faculty since the objective and its inception was to train Technical Assistants, for the Department of Railways, Survey and Public Works, Federated Malay States. UTM started in 1904 when the Treacher Technical School began its operation at Weld Road (now Jalan Raja Chulan) to train Technical Assistants.

The school was then upgraded to the status of Technical College and officially opened on March 1, 1905, officiated by the British High Commissioner, Sir Donald Mac Gillivray. The college offered courses at a Diploma level and one of the courses was a Diploma in Civil Engineering. On March 1972, His Majesty DYMM Yang Dipertuan Agong officially proclaimed the formation of Institut Teknologi Kebangsaan (ITK) under section 5 (1) of the university and University College Act, 1971. On 1 April 1975 the institute reached another milestone of its history when it was officially declared as Universiti Teknologi Malaysia. The faculty of civil engineering started with a Department of Engineering in 1972, and later became a faculty in 1975. The journey of the faculty started as a college becoming an institute and finally a faculty.

In 1989, the faculty moved from the UTM Kuala Lumpur Campus at Jalan Semarak to UTM Johor Bahru Campus. During its initial formation, the faculty had 3 departments, namely the Structures and Materials Department, the Hydraulics and Hydrology Department and the Geotechnics and Transport Department. The new Environmental Engineering Department was set up in 1976. To support the service and future development of the faculty, three (3) management units were formed. The units are

Information Technology Unit (ITUCE), Surveying Unit and Civil Engineering Testing Unit (CETU). The faculty has a long history of producing distinguished graduates who have contributed substantially of the development of the infrastructure in Malaysia.

In undertaking the restructuring of its academic entity and witnessing the merger of faculty from 2018, Universiti Teknologi Malaysia has embarked on a unique history when 18 to seven. The restructuring is effective from 1 July 2018. The restructuring, known as UTM Synergy 4.0 leads the university to have only seven faculties, one of them is Faculty of Engineering. This major transformation is meant to open more opportunities for synergy and collaborations between academicians from different academic disciplines and innovation in offering academic programs that can fulfill the new needs of society.

The Faculty of Engineering is a result of the merger of Faculty of Civil Engineering, Faculty of Electrical Engineering, Faculty of Mechanical Engineering, Faculty of Chemical and Energy Engineering, Faculty of Computing and Faculty of Bioscience and Medical Engineering. Then, the name of the School of Civil Engineering was established after the merger of the Faculty of Engineering. In 2022, the School of Civil Engineering reverted to being the Faculty of Civil Engineering.

MISSION, VISION & MOTTO

Mission

To spearhead excellence in the development of education, talent and innovative wellbeing and prosperity.

Vision

To be a globally prominent Civil Engineering Centre for education, research and innovation.

Motto

"ALWAYS AHEAD"

FACTS & FIGURES

POSTGRADUATE
STUDENTS

552

UNDERGRADUATE
STUDENTS

997

ACADEMIC
STAFF

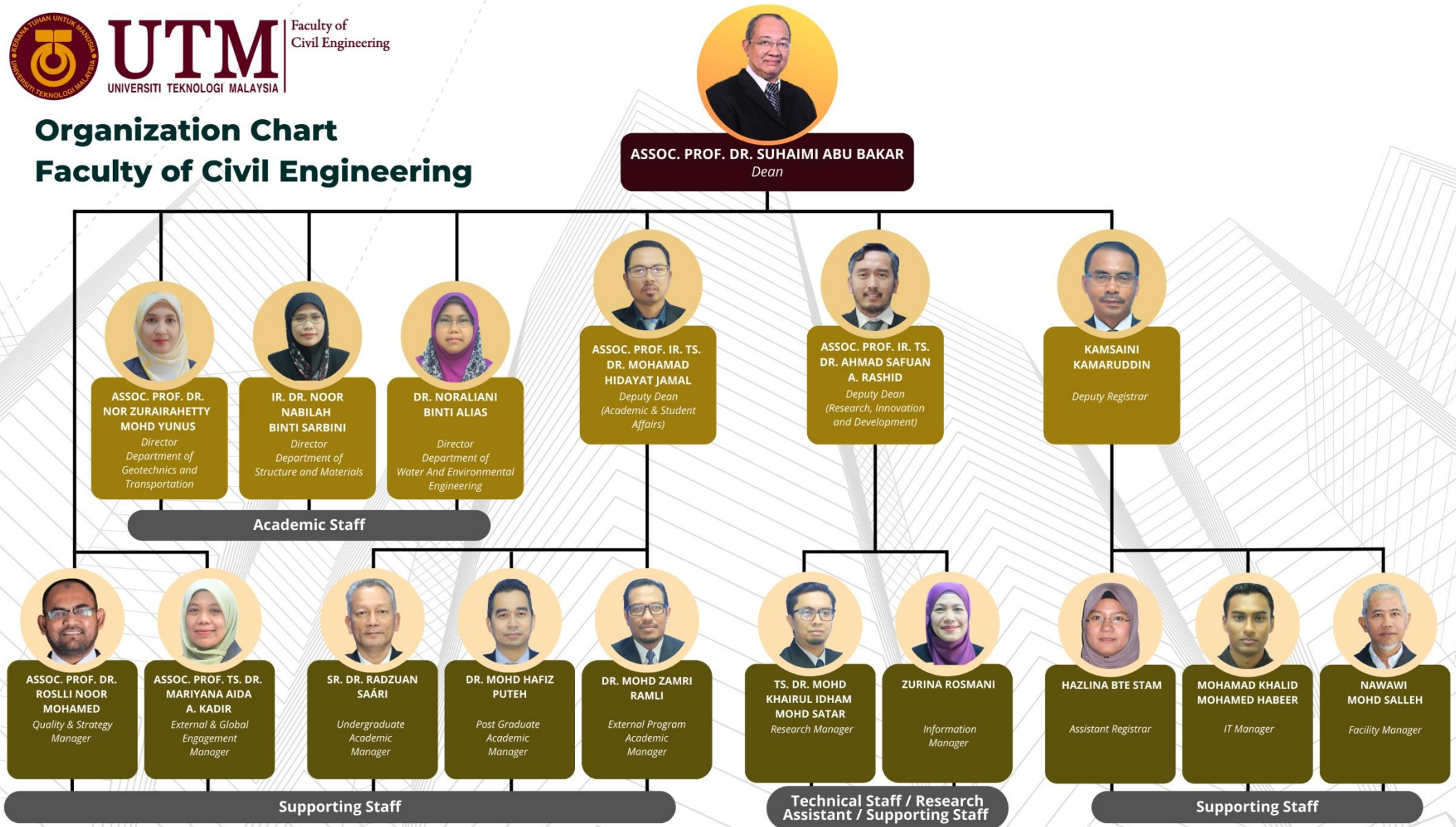
117

SUPPORTING
STAFF

80



Organization Chart Faculty of Civil Engineering



DEPARTMENT IN FACULTY OF CIVIL ENGINEERING



DEPARTMENT OF
STRUCTURE AND
MATERIALS

51 STAFF



DEPARTMENT OF
GEOTECHNICS AND
TRANSPORTATION

28 STAFF



DEPARTMENT OF
WATER AND
ENVIRONMENTAL
ENGINEERING

40 STAFF

CENTRE OF EXCELLENCE



FORENSIC ENGINEERING
CENTRE



CENTRE OF TROPICAL
GEOENGINEERING



CONSTRUCTION RESEARCH
CENTRE
UTM CONSTRUCTION
RESEARCH CENTRE



CENTRE FOR
ENVIRONMENTAL
SUSTAINABILITY AND
WATER SECURITY



CENTRE FOR RIVER AND
COASTAL ENGINEERING

3 FACILITIES

The UTM-Faculty of Civil Engineering has one of the largest civil engineering teaching and research facilities in the country. The main facilities include smart classrooms, lecture theatres and halls, well-equipped laboratories, IT facilities and a resource center.

3.1 Lecture Theatres, Halls and Classrooms

The Faculty has two lecture halls that can accommodate 120 each. There are fifteen classrooms that can seat 60 students. The Faculty has one "Active Learning Classroom" and one "Smart Classroom" that can accommodate 120 capacity.

There are room for practical and studio work that can accommodate between 50-60 students each, and two 60-capacity classrooms for Problem-Based Learning (PBL) activities. To cater for examination needs there are two examination halls with a capacity of 120-200 students.

All lecture halls and classrooms are fully air-conditioned and are equipped with the latest teaching and learning aids.

3.2 Laboratories

There are six main research laboratories which include the Structure and Material laboratory (5860 m²) Block D04, the Geotechnics laboratory (2870 m²) Block D03, the Transportation laboratory (3200 m²) Block D02, the Hydraulics and Hydrology laboratory (4450 m²) Block D01, the Environmental Engineering laboratory (1170 m²) Block C07 and the Surveying laboratory (150 m²) Block M47.

These laboratories are equipped with a wide range of the latest state-of-the-art equipment and testing facilities. Faculty also has a teaching laboratory building located at Block M50.

3.3 IT Facilities

The IT facilities at the Faculty consist of four computer laboratories containing more than two hundred computers for teaching and students' use. Networking and internet facilities with wi-fi access points are available throughout the premises. The Faculty also provides various engineering and general purpose software to assist students in their study. Building Information Modelling (BIM) Lab has also been established in the Faculty that can accommodate 50 capacity.

3.4 Resource Center and student lounge room

The Faculty houses a resource center (190 m²) that is manned by trained personnel to provide students and staff with specific civil engineering references such as a collection of theses, staff publications, reports and relevant textbooks. The center is also responsible for the management of teaching and learning equipment such as computers, LCD projectors, audio, and video equipment. The Faculty also has 'Student Lounge' area which provides multifunctional space for students to engage in various activities beyond the traditional classroom setting.

4 PROGRAMME OF STUDY

4.1 Programme Specification

The Bachelor of Civil Engineering with Honours is offered either on a full-time or part-time basis. The full-time programme is the main programme, offered by the Faculty while the part-time programme is offered by the School of Professional and Continuing Education (UTMSPACE). The full-time programme is offered only at the UTM Main Campus in Johor Bahru while the part-time programme is offered at various learning centres throughout Malaysia. The duration of study for the full-time programme is subjected to the student's entry qualifications and lasts between four (4) years to a maximum of six (6) years. Further information on the part-time programme is available at <https://utmSPACE.edu.my>

4.1.1 General

1. Awarding Institution	Universiti Teknologi Malaysia			
2. Teaching Institution	Universiti Teknologi Malaysia			
3. Programme Name	Bachelor of Civil Engineering with Honours			
4. Final Award	Bachelor of Civil Engineering with Honours			
5. Programme Code	SEAWH			
6. Professional or Statutory Body of Accreditation	Board of Engineers Malaysia (BEM)			
7. Language(s) of Instruction	English and Bahasa Melayu			
8. Mode of Study (Conventional, distance learning, etc)	Conventional			
9. Mode of operation (Franchise, self-govern, etc)	Self-governing			
10. Study Scheme (Full Time/Part Time)	Full Time and Part Time			
11. Study Duration	Minimum : 4 yrs Maximum: 6 yrs			
Type of Semester	No. of Semesters		No of Weeks/Semester	
	Full Time	Part Time	Full Time	Part Time
Normal	8	10	14	14
Short	4	4	8	8

4.1.2 Entry Requirements

The minimum qualifications for candidates who intend to do a Bachelor of Engineering (Civil) with Honours are as follows:

1. Minimum results based on **the Malaysian High School Certificate (STPM)** (results would be based on the general requirements as well as other conditions as the pre-requisites for the programme set by the university).

General University Requirements:

- i. Passed and obtained good results in the **Malaysian Certificate Examination (SPM)** or its equivalent.
- ii. Passed Bahasa Melayu /Bahasa Malaysia with **credit** in the SPM/equivalent.
- iii. Passed the **Malaysian High School Certificate (STPM)** or its equivalent and obtained the following:
 - a. **Grade C (NGMP 2.00)** General paper, and
 - b. **Grade C (NGMP 2.00)** in two (2) other subjects
- iv. Passed the **Malaysian University English Test (MUET)** with minimum result of **Band 1**.

Special Requirements for the Programme

- i. Obtained a **CGPA of 2.80**; and Passed with a minimum **Grade B- (NGMP 2.67)** in two of the following subjects:
 - a. Mathematics T / Further Mathematics
 - b. Physics/ Chemistry/ Biology(Eligible candidates in **Physics** subjects at Matriculation / Foundation must obtained minimum of **Grade C** in SPM for **Chemistry** subject) Or
(Eligible candidates in **Chemistry or Biology** subjects at Matriculation / Foundation must obtained minimum of **Grade C** in SPM for **Physics** subjects.)
- ii. Passed **Mathematics** and **Physics** in SPM with minimum of **GED C**.
- iii. Passed the **Malaysian University English Test (MUET)** with minimum result of **Band 2**.
- iv. No disabilities which inhibit physical activities.

2. Minimum requirements for **Matriculation Certificates (KPM) / Asasi Sains UM / Asasi UiTM** (fulfil the general requirements set by the university as well as other conditions of the programme).

General University Requirements

- i. Passed the **Malaysian Certificate Examination (SPM)** / equivalent examination with **GED C** in Bahasa Melayu/Bahasa Malaysia.
- ii. Passed the **Matriculation Certificate Examination KPM/Asasi Sains UM / Asasi UiTM** with a minimum **CGPA of 2.00** and passed all the core subjects.
- iii. Passed the **Malaysian University English Test (MUET)** with minimum result of **Band 1**.

Special Requirements of the Programme:

- i. Obtained a **CGPA of 2.80**; and Passed with a **Grade B- (CGPA 2.67)** in two of the following subjects:
 - a. Mathematics

- . Physics/ Engineering Physics / Chemistry / Engineering Chemistry / Biology (Eligible candidates in **Physics / Engineering Physics** subjects at Matriculation / Foundation must obtained minimum of **Grade C** in SPM for **Chemistry** subjects.)

Or

(Eligible candidates in **Chemistry / Engineering Chemistry or Biology** subjects at Matriculation / Foundation must obtained minimum of **Grade C** in SPM for **Physics** subjects.)

- ii. Passed **Mathematics** and **Physics** in SPM with minimum of **GREC C**.
- iii. Passed the Malaysian University English Test (MUET) with minimum result of **Band 2**.
- iv. No disabilities which inhibit physical activities.

3. Minimum qualifications for students with **Certificates/Diplomas** (Fulfill the general requirements set by the university as well as specific requirements of the programme).

General University Requirements

- i. Passed the **Malaysian Certificate Examination (SPM)** / equivalent examination with **credit** in Bahasa Melayu/Bahasa Malaysia.
- ii. Obtained a **Diploma** or **other equivalent** qualification recognized by the **Government of Malaysia** and approved by the **Senate of IPTA**. or passed the **Malaysian High School Certificate (STPM)** with minimum result of:-
 - a. **Grade C (NGMP 2.00)** General paper
 - b. **Grade C (NGMP 2.00)** in two (2) other subjects
- iii. Passed Matriculation examination with minimum of **CGPA 2.00**.
- iv. Passed the Malaysian University English Test (MUET) with minimum result of **Band 1**.

Special Requirements of the Programme:

- i. Obtained a **Diploma in Civil Engineering from UTM**/equivalent with a minimum **CGPA of 2.70**; or for candidates with a CGPA below 2.70 but have a minimum of **two or more years of working experience** in the related area of study will be eligible to apply for a place to study at the university.
- ii. Obtained a **credit pass in Mathematics** in their SPM/equivalent examination or a minimum **grade C** in any of the Mathematics Courses taken at the diploma level.
- iii. Passed the Malaysian University English Test (MUET) with minimum result of **Band 2**.
- iv. No disabilities which inhibit physical activities.
- v. Candidates are required to submit the results transcript of all their examinations taken during their Diploma study (semester one until the final semester) to UTM. A copy of the diploma or a letter of completion of study will also have to be submitted together with their applications.

Note: - Year of entry and duration of study will be based on the credit exemptions and credit transfer awarded by the university.

4.1.3 Programme Educational Objectives (PEO)

CODE	INTENDED EDUCATIONAL OBJECTIVES
PEO 1	Competent, innovative and entrepreneurial in acquiring and applying knowledge towards solving Civil Engineering problems.
PEO 2	Possess leadership qualities, able to work, manage in diverse teams and serve the society in multi-disciplinary environment.
PEO 3	Demonstrate professionalism and uphold ethical values with emphasis on sustainable environment.
PEO 4	Communicate effectively, possess strong self-confidence and recognize the need for life-long learning.

4.1.4 Programme Learning Outcomes (PLO)

After having completed the programme, graduates should be able to demonstrate the following competencies:

CODE	INTENDED EDUCATIONAL OBJECTIVES
PLO 1	Apply knowledge or mathematics, natural science, engineering fundamentals and an engineering specialization as specified in WK1 to WK4 respectively to the solution of complex engineering problems.
PLO 2	Identify, formulate, conduct research literature and analyze complex engineering problems reaching substantiated conclusions using first principles of mathematics, natural sciences and engineering sciences (WK1 to WK4)
PLO 3	Design solutions for complex engineering problems and design systems, components or processes that meet specified needs with appropriate consideration for public health and safety, cultural, societal and environmental considerations (WK5)
PLO 4	Conduct investigation of complex engineering problems using research-based knowledge (WK8) and research methods including design of experiments, analysis and interpretation of data and synthesis of information to provide valid conclusions
PLO 5	Create, select, and apply appropriate techniques, resources and modern engineering and IT tools, including prediction and modelling to complex engineering problems with an understanding of the limitations (WK6)
PLO 6	Apply reasoning informed by contextual knowledge to assess societal, health, safety, legal and cultural issues, and the consequent responsibilities relevant to professional engineering practice and solutions to complex engineering problems (WK7)
PLO 7	Understand and evaluate the sustainability and impact of professional engineering work in the solutions of complex engineering problems in societal and environmental contexts (WK7)
PLO 8	Apply ethical principles and commit to professional ethics and responsibilities and norms of engineering practice (WK7)
PLO 9	Function effectively as an individual, and as a member of leader in diverse teams and in multi-disciplinary settings
PLO 10	Communicate effectively on complex engineering activities with the engineering community and with society at large, such as being able to comprehend and write effective reports and design documentation, make effective presentations, and give and receive clear instructions
PLO 11	Demonstrate knowledge and understanding of engineering management principles and economic decision making and apply these to one's own work, as a member and leader in a team, to manage projects in multidisciplinary environments
PLO 12	Recognize the need for, and have the preparation and ability to engage in independent and life-long learning in the broadest context of technological change

4.1.5 Mapping Program Outcomes (PLO), Complex Problems (WP), Complex Engineering Activities (EA) and Knowledge Profiles (WK)

Mapping Core Courses of Program Outcomes (PLO), Complex Problems (WP), Complex Engineering Activities (EA) and Knowledge Profiles (WK)

CORE COURSE OFFERED		Program Outcomes											Complex Problems							Complex Eng. Activities					Knowledge Profiles								
		Engineering Knowledge	Problem Analysis	Design/Development of Solutions	Investigation	Modern Tool Usage	The Engineer and Society	Environment and Sustainability	Ethics	Individual and Teamwork	Communication	Project Management & Finance	Life Long Learning	Depth of knowledge	Range of conflicting	Depth of analysis	Familiarity of issues	Extent of applicable codes	Extent of stakeholder involvement	Interdependence	Range of resources	Level of interaction	Innovation	Consequences to society	Familiarity	Theory-based natural	Conceptually-based	Engineering fundamentals	Engineering specialist knowledge	Engineering design	Engineering practice	Role of engineering in	Research literature
		PLO 1	PLO 2	PLO 3	PLO 4	PLO 5	PLO 6	PLO 7	PLO 8	PLO 9	PLO 10	PLO 11	PLO 12	WP 1	WP 2	WP 3	WP 4	WP 5	WP 6	WP 7	EA 1	EA 2	EA 3	EA 4	EA 5	WK 1	WK 2	WK 3	WK 4	WK 5	WK 6	WK 7	WK 8
1	SEAA 1011 Introduction to Civil Engineering	/								/			/	/	/					/	/						/	/					
2	SEAA 1023 Engineering Surveying	/	/			/						/	/	/	/					/	/			/	/	/				/			
3	SEAA 1031 Surveying Camp	/	/			/			/	/			/	/	/					/	/				/	/	/			/			
4	SEAA 1213 Engineering Mechanics	/							/				/	/	/										/	/	/		/				
5	SEAA 1422 Engineering Drawing	/				/			/				/	/		/											/			/			
6	SEAA 1513 Fluid Mechanics	/	/						/				/	/	/												/		/				/
7	SEAA 1713 Soil Mechanics	/								/			/	/	/					/					/		/		/				
8	SEAA 2012 Civil Engineering Laboratory 1		/						/				/	/					/								/		/				

Mapping Elective Courses of Program Outcomes (PLO), Complex Problems (WP), Complex Engineering Activities (EA) and Knowledge Profiles (WK)

ELECTIVE COURSES OFFERED			Program Outcomes										Complex Problems							Complex Eng. Activities					Knowledge Profiles									
			Engineering Knowledge	Problem Analysis	Design/Development of Solutions	Investigation	Modern Tool Usage	The Engineer and Society	Environment and Sustainability	Ethics	Individual and Team Work	Communication	Project Management & Finance	Life Long Learning	Depth of knowledge	Range of conflicting	Depth of analysis	Familiarity of issues	Extent of applicable codes	Extent of stakeholder involvement	Interdependence	Range of resources	Level of interaction	Innovation	Consequences to society	Familiarity	Theory-based natural	Conceptually-based	Engineering fundamentals	Engineering specialist knowledge	Engineering design	Engineering practice	Role of engineering in	Research literature
			PLO 1	PLO 2	PLO 3	PLO 4	PLO 5	PLO 6	PLO 7	PLO 8	PLO 9	PLO 10	PLO 11	PLO 12	WP 1	WP 2	WP 3	WP 4	WP 5	WP 6	WP 7	EA 1	EA 2	EA 3	EA 4	EA 5	WK 1	WK 2	WK 3	WK 4	WK 5	WK 6	WK 7	WK 8
1	SEAA 4143	Construction Plants and Equipment			/	/							/	/	/														/	/		/		
2	SEAA 4163	Concrete Technology	/					/					/	/	/							/							/		/			
3	SEAA 4243	Finite Element Methods			/	/							/	/	/													/		/		/		
4	SEAA 4263	Earthquake and Wind Engineering	/	/	/								/		/	/	/										/	/						
5	SEAA 4293	Advanced Solid Mechanics			/	/							/			/	/											/				/		
6	SEAA 4323	Prestressed Concrete Design			/	/							/	/			/											/				/		
7	SEAA 4383	Analysis and Design of Tall Building Systems			/	/							/	/	/													/				/		
8	SEAA 4523	Coastal Engineering			/	/					/				/													/				/		
9	SEAA 4613	Water Resources Management			/	/				/		/	/		/		/					/						/				/		
10	SEAA 4723	Engineering Rock Mechanics			/	/							/	/	/												/	/	/			/		
11	SEAA 4733	Advanced Foundation Engineering			/	/				/			/	/	/						/						/		/	/		/		

12	SEAA 4753	Geological Engineering and Environment			/	/								/	/	/											/	/	/	/	/	/	/
13	SEAA 4813	Pavement Design and Construction			/	/								/	/	/													/	/	/	/	
14	SEAA 4823	Transportation Planning			/	/								/	/	/														/	/	/	
15	SEAA 4843	Advanced Road Material			/	/								/	/	/	/													/	/	/	
16	SEAA 4923	Advanced Water and Wastewater Treatment			/	/								/	/	/														/	/	/	
17	SEAA 4943	Solid Waste Management	/		/	/								/	/	/			/										/	/	/	/	
18	SEAA 4973	Industrial and Hazardous Waste Treatment			/	/								/	/	/														/	/	/	
19	SEAA 4983	Water Quality Management			/	/				/				/	/	/	/										/			/	/	/	
20	SEAA 4013	Advanced Engineering Surveying	/	/			/					/	/	/	/												/	/		/	/	/	
21	SEAA 4133	Construction Laws and Contract			/	/				/					/											/					/	/	/
22	SEAA 4153	Offshore Structures			/	/								/												/			/	/	/	/	
23	SEAA 4373	Bridge Engineering			/					/				/	/			/	/					/			/	/	/	/	/	/	
24	SEAA 4853	Railway Engineering			/	/								/	/	/	/												/	/	/	/	

Mapping Core Courses to C P A

CORE COURSES OFFERED			Cognitive						Psychomotor Skills							Affective Skills				
			Remembering	Understanding	Applying	Analyzing	Evaluating	Creating	Perception	Set	Guided Response	Articulating	Complex Overt Response	Adaptation	Origination	Receiving Phenomena	to Responding phenomena	Valuing	Organizing Values	Internalizing Values
			C1	C2	C3	C4	C5	C6	P1	P2	P3	P4	P5	P6	P7	A1	A2	A3	A4	A5
1	SEAA 1011	Introduction to Civil Engineering	/	/	/									/	/					
2	SEAA 1023	Engineering Surveying	/	/	/	/		/	/	/	/									
3	SEAA 1031	Surveying Camp	/	/	/	/		/	/	/	/	/	/	/	/	/	/	/		
4	SEAA 1213	Engineering Mechanics	/	/	/									/	/	/	/			
5	SEAA 1422	Engineering Drawing	/	/	/			/	/	/	/			/	/	/				
6	SEAA 1513	Fluid Mechanics	/	/	/	/	/													
7	SEAA 1713	Soil Mechanics	/	/	/	/								/	/	/	/			
8	SEAA 2012	Civil Engineering Laboratory 1	/	/	/	/	/	/	/	/	/	/	/	/	/	/	/	/		
9	SEAA 2032	Mechanical & Electrical Systems	/	/	/	/														
10	SEAA 2112	Civil Engineering Materials	/	/	/	/	/	/												
11	SEAA 2223	Mechanics of Materials & Structures	/	/	/	/														
12	SEAA 2413	Computer Programming	/	/	/	/	/							/	/	/				
13	SEAA 2513	Hydraulics	/	/	/	/	/													
14	SEAA 2712	Engineering Geology & Rock Mechanics	/	/	/	/	/	/						/	/	/	/			
15	SEAA 2722	Geotechnics 1	/	/	/	/														
16	SEAA 2832	Highway Engineering	/	/	/	/	/	/						/	/	/	/			
17	SEAA 2912	Water Treatment	/	/	/									/	/	/	/			
18	SEAA 2922	Wastewater Engineering	/	/	/	/	/							/	/	/	/	/		
19	SEAA 3012	Civil Engineering Laboratory 2	/	/	/	/	/	/	/	/	/	/	/	/	/	/	/	/		

20	SEAA 3022	Integrated Design Project 1	/	/	/	/	/									/	/	/			
21	SEAA 3045	Industrial Training	/	/	/	/			/	/	/	/	/	/	/	/	/	/	/	/	/
22	SEAA 3123	Construction Technology, Contract & Estimating	/	/	/	/	/									/	/	/			
23	SEAA 3243	Theory of Structures	/	/	/	/	/									/	/				
24	SEAA 3313	Reinforced Concrete Design 1	/	/	/	/	/	/								/	/	/			
25	SEAA 3323	Structural Steel and Timber Design	/	/	/	/	/	/								/	/	/			
26	SEAA 3412	Building Information Modelling and Data Management	/	/	/	/	/		/	/	/	/									
27	SEAA 3613	Hydrology and Water Resources	/	/	/	/	/	/													
28	SEAA 3712	Geotechnics 2	/	/	/	/	/									/	/	/			
29	SEAA 3842	Traffic Engineering	/	/	/	/	/		/	/	/	/									
30	SEAA 3913	Environmental Management	/	/	/	/	/	/													
31	SEAA 4021	Civil Engineering Seminar	/	/	/											/	/	/			
32	SEAA 4022	Research Methodology and Pre- Project	/	/	/	/	/		/	/	/	/	/	/							
33	SEAA 4034	Final Year Project	/	/	/	/	/	/	/	/	/	/	/	/		/	/	/			
34	SEAA 4032	Integrated Design Project 2	/	/	/	/	/									/	/	/			
35	SEAA 4113	Construction & Project Management	/	/	/																
36	SEAA 4223	Structural Analysis	/	/	/	/	/		/	/	/										
37	SEAA 4333	Reinforced Concrete Design 2	/	/	/	/	/									/	/	/	/		
38	SEAA ###3	Civil Elective 1																			
39	SEAA ###3	Civil Elective 2																			
40	SEAA ###3	Civil Elective 3																			
41	S#### ###3	Free Elective																			
		Count	37	37	37	31	24	9	11	11	11	10	6	6	4	23	23	21	9	3	

Mapping Elective Courses to C P A

ELECTIVE COURSES OFFERED			Cognitive Skills						Psychomotor Skills							Affective Skills				
			Remembering	Understanding	Applying	Analysing	Evaluating	Creating	Perception	Set	Guided Response	Mechanism	Complex Overt Response	Adaptation	Origination	Receiving Phenomena	to Responding phenomena	Valuing	Organizing Values	Internalizing Values
			C1	C2	C3	C4	C5	C6	P1	P2	P3	P4	P5	P6	P7	A1	A2	A3	A4	A5
1	SEAA 4143	Construction Plants and Equipment	/	/	/	/	/	/												
2	SEAA 4163	Concrete Technology	/	/	/	/	/	/												
3	SEAA 4243	Finite Element Methods	/	/	/	/	/													
4	SEAA 4263	Earthquake and Wind Engineering	/	/	/	/	/													
5	SEAA 4293	Advanced Solid Mechanics	/	/	/	/	/													
6	SEAA 4323	Prestressed Concrete Design	/	/	/	/	/								/	/	/	/		
7	SEAA 4383	Analysis and Design of Tall Building Systems	/	/	/	/	/	/												
8	SEAA 4523	Coastal Engineering	/	/	/	/	/													
9	SEAA 4613	Water Resources Management	/	/	/	/	/	/	/	/	/				/	/	/			
10	SEAA 4723	Engineering Rock Mechanics	/	/	/	/	/													
11	SEAA 4733	Advanced Foundation Engineering	/	/	/	/	/								/	/	/	/		
12	SEAA 4753	Geological Engineering and Environment	/	/	/	/	/	/												
13	SEAA 4813	Pavement Design and Construction	/	/	/	/	/													
14	SEAA 4823	Transportation Planning	/	/	/	/	/													
15	SEAA 4843	Advanced Road Material	/	/	/	/	/													
16	SEAA 4923	Advanced Water and Wastewater Treatment	/	/	/	/	/	/							/	/	/	/		
17	SEAA 4943	Solid Waste Management	/	/	/	/														
18	SEAA 4973	Industrial and Hazardous Waste Treatment	/	/	/	/	/	/							/	/	/	/		

19	SEAA 4983	Water Quality Management	/	/	/	/										/	/	/		
20	SEAA 4013	Advanced Engineering Surveying	/	/	/	/	/	/								/	/	/	/	
21	SEAA 4133	Construction Laws and Contract	/	/	/	/	/	/												
22	SEAA 4153	Offshore Structures	/	/	/	/	/													
23	SEAA 4373	Bridge Engineering	/	/	/	/	/									/	/	/		
24	SEAA 4853	Railway Engineering	/	/	/	/	/													

4.1.6 Classification of Courses

NO.	CLASSIFICATION	CREDIT HOURS	PERCENTAGE
i.	University Courses		
	a. General	6	
	b. Service (Mathematic)	15	22.96%
	c. Language	6	
	d. Entrepreneurship	2	
	e. Co-Curriculum	2	
ii.	Faculty/Programme Core	92	68.15%
iii.	Programme Electives	12	8.89%
	Total	135	100%
For engineering programmes please complete the following classification. (Others please refer to the Statutory Body guidelines)			
A	Engineering Courses		
	a. Lecture/Project/Laboratory	88	
	b. Workshop/Field/Design Studio	5	77.04%
	c. Industrial Training	5	
	d. Final Year Project	6	
Total Credit Hours for Part A		104	
B	Related Courses		
	a. Applied Science/Mathematic/Computer	15	
	b. Management/Law/Humanities/Ethics/Economy	8	22.96%
	c. Language	6	
	d. Co-Curriculum	2	
Total Credit Hours for Part B		31	
Total Credit Hours for Part A and B		135	100%
Total Credit Hours to Graduate		135 credit hours	

4.1.7 Programme Structures, Curriculums and Award Requirements

The programme is offered on full-time basis and is based on a two (2) semester per academic session. Generally, students are expected to undertake courses equivalent to between twelve (12) to eighteen (18) credit hours per semester. Assessment is based on coursework and final examinations given throughout the semester.

Award requirements:

To graduate, students must:

- i. Attain a total of not less than 135 credit hours with a minimum CGPA of 2.0.
- ii. Pass Industrial Training
- iii. Students from other approved programmes who wish to undertake a Minor in the programme must complete not less than 15 credit hours of specialized Civil Engineering courses which form part of the core and/or electives of the programme, as listed in the minor programme list.

YEAR 1					
SEMESTER 1			SEMESTER 2		
CODE	COURSES	CR.	CODE	COURSES	CR.
SEAA 1011	Introduction to Civil Engineering	1	SEAA 1023	Engineering Surveying	3
SEAA 1213	Engineering Mechanics	3	SEAA 1422	Engineering Drawing	2
SEAA 1513	Fluid Mechanics	3	SEAA 1713	Soil Mechanics	3
SSCE 1693	Engineering Mathematics I	3	SSCE 1793	Differential Equations	3
ULRS 1182 (local only)	Appreciation Of Ethics & Civilizations	2	SSCE 1993	Engineering Mathematics II	3
UHLM 1012 (international)	Malay Language for Communication 2				
SEAA 2112	Civil Engineering Materials	2	ULRS 1012	Value and Identity	2
TOTAL CREDIT		14	TOTAL		16

*Enhancement course for student who did not obtain Credit Exemption

**Elective course for international students only

SHORT SEMESTER		
CODE	COURSES	CR.
SEAA 1031	Surveying Camp	1

YEAR 2					
SEMESTER 1			SEMESTER 2		
CODE	COURSES	CR.	CODE	COURSES	CR.
SEAA 2012	Civil Engineering Laboratory 1	2	SEAA 2223	Mechanics of Materials and Structures	3
SEAA 2032	Mechanical and Electrical Systems	2	SEAA 2413	Computer Programming	3
SEAA 2513	Hydraulics	3	SEAA 2712	Engineering Geology and Rock Mechanics	2
SEAA 2722	Geotechnics 1	2	SEAA 2922	Wastewater Engineering	2
SEAA 2832	Highway Engineering	2	SSCE 2193	Engineering Statistics	3
SEAA 2912	Water Treatment	2	ULRF 2**2	Service Learning & Engagement Courses	2
SSCE 2393	Numerical Methods	3	ULRS 1022	Philosophy & Current Issues (Local Students)	2
UHLB 2122	Academic Communication Skill	2			
TOTAL CREDIT		18	TOTAL CREDIT		17

YEAR 3					
SEMESTER 1			SEMESTER 2		
CODE	COURSES	CR.	CODE	COURSES	CR.
SEAA 3123	Construction Technology, Contract & Estimating	3	SEAA 3012	Civil Engineering Laboratory 2	2
SEAA 3243	Theory of Structures	3	SEAA 3022	Integrated Design Project 1	2
SEAA 3313	Reinforced Concrete Design 1	3	SEAA 3323	Structural Steel & Timber Design	3
SEAA 3412	Building Information Modelling and Data Management	2	SEAA 3613	Hydrology and Water Resources	3
SEAA 3712	Geotechnics 2	2	SEAA 3842	Traffic Engineering	2
UHLX 1**2	Foreign Language for Communication	2	SEAA 3913	Environmental Management	3
ULRS 3032	Entrepreneurship & Innovation	2	UHLB 3132	English for Professional Purpose	2
TOTAL CREDIT		17	TOTAL CREDIT		17

SHORT SEMESTER		
CODE	COURSES	CR.
SEAA 3045	Industrial Training	5

YEAR 4					
SEMESTER 1			SEMESTER 2		
CODE	COURSES	CR.	CODE	COURSES	CR.
SEAA 4021	Civil Engineering Seminar	1	SEAA 4032	Integrated Design Project 2	2
SEAA 4022	Research Methodology and Pre-Project	2	SEAA 4034	Final Year Project	4
SEAA 4223	Structural Analysis	3	SEAA 4113	Constructions & Project Management	3
SEAA ###3	Elective 1	3	SEAA 4333	Reinforced Concrete Design 2	3
SEAA ###3	Elective 2	3	SEAA 4##3	Elective 3	3
***3	Free Elective	3			
TOTAL CREDIT		15	TOTAL CREDIT		15

4.2 Our Uniqueness

Faculty of Civil Engineering has its own characteristics and extraordinary achievements that distinguish us from others, both locally and globally. In the field of Civil Engineering education, our faculty stands as a towering presence, boasting numerous awards and achievements that underscore our commitment to excellence.

- i. One of the biggest Civil Engineering lab/facilities in the country.
- ii. A major contributor of Civil Engineering graduates in the local workforce.
- iii. High employability rate of graduates.

- iv. A major contributor of leaders in government and industrial sectors.
- v. The first Civil Engineering Faculty achieved ISO 9001:2008 and ISO 17025:2005 certifications.
- vi. Diversity of lecturers (qualification background from institutions all over the world).
- vii. According to the QS World Ranking 2022, we were ranked first in Malaysia in the Civil Engineering discipline.
- viii. Students are given the opportunity to experience studying abroad through various programmes organized by the Faculty/ University. Programmes such as service learning and student exchange are highly sought after by students who want to broaden their knowledge and prepare themselves for the global market.

4.3 Career Prospects and Career Path

Graduates of the programme can be employed as Project Engineers, Construction Engineers, Hydraulic Engineers, Environmental Engineers, Highway and Transport Engineers, Geotechnical Engineers, Site Engineers, Design Engineers, Structural Engineers and Quality Assurance/Quality Control Engineers.

4.4 Professional Skills Certificate (PSC)

Students are compulsory to enroll in certificate programs offered by the Centre of Excellence in the University and the School of Professional and Continuing Education (SPACE) during semester breaks:

For Compulsory Courses:

- i. Design Thinking for Entrepreneur
- ii. Talent and Competency Management
- iii. English Communication Skills for Graduating Students (ECS)

For Electives Courses:

- i. Data Analytics for Organization
- ii. Professional Ethics and Integrity
- iii. Construction Measurement (Mechanical & Electrical)
- iv. OSHA for Engineering Industry and Laboratory
- v. Quality Management for Built Environment and Engineering Professional
- vi. Safety and Health Officer Introductory Course
- vii. Industrial Machinery and Lubrication

4.5 Civil Engineering Exit Test (CEET)

The Civil Engineering Exit Test (CEET) is a mandatory examination that all students must undertake in their final year. Passing this test is a prerequisite for graduation. It comprehensively evaluates the knowledge and skills acquired since the first year of study.

4.6 Facilities Available

At the heart of our academic profile lies a commitment to providing students with an unparalleled educational experience, anchored by a robust infrastructure and facilities that caters to the diverse needs of the community.

- i. Structural Engineering Laboratory
- ii. Material Engineering Laboratory
- iii. Hydraulic and Hydrology Laboratory
- iv. Environmental Laboratory
- v. Geotechnical Laboratory
- vi. Highway & Transportation Laboratory
- vii. Computer Laboratory
- viii. Civil Engineering Testing Unit (CETU)
- ix. Resource Centre and Student Lounge Room
- x. Surveying Unit
- xi. Teaching Laboratory
- xii. Building Information & Modelling Laboratory
- xiii. Lecture Halls
- xiv. Smart Classroom
- xv. Active Learning Classroom
- xvi. Examination Hall
- xvii. Meeting Room
- xviii. Management Office
- xix. Surau
- xx. Food Kiosk

4.7 Supports for Students and Their Learning

In the dynamic landscape of academia, fostering an environment conducive to student success is paramount. It entails offering a comprehensive suite of resources and services to ensure their holistic development and well-being. In addition to personalised academic support, our institution offers a wealth of infrastructure support designed to facilitate student learning and engagement.

- i. Personal Support
 - Academic Advisor
 - Student Academic Guidelines
 - Counselling
- ii. Infrastructure Support
 - Internet Access
 - E-Learning
 - Digital Library
 - Health Career and Recreational
- iii. Financial Support
 - Research Grant
 - Teaching Assistant
 - Research Assistant

- Perbadanan Tabung Pengajian Tinggi Negara (PTPTN)
- Biasiswa Endowmen
- Zakat

4.8 Methods for Evaluating and Improving the Quality and Standards of Teaching and Learning Mechanisms

- 1 Students' performance based on:
 - Good Status (KB) and Conditional Status (KS)
 - Cumulative Point Average (CPA)
 - Graduation On Time (GOT)
 - Analysis of course performance (Course Assessment Report – CAR)
 - Analysis of programme performance (Programme Assessment Report – PAR)
 - Overall performance at Graduation Point
- 2 Employability
 - Graduate Tracking Study Scheme/Skim Kajian Pengesanan Graduan (SKPG)
 - Alumni Survey
 - Market Survey
 - Employer Survey
- 3 Lecturer's Performance:
 - Teaching evaluation by students (e-PPP)
 - Alumni Survey
 - Competency checklist for staff (CV)
 - Annual staff appraisal (e-LPPT)
- 4 Other Supports
 - Faculty Academic Committee
 - PSM (undergraduate final year project) survey
 - External Examiner Reports
 - Industrial Advisory Panel Reports
 - Exit Survey
 - Students e-Portfolio
 - Generic Skills Evaluation
 - Visiting Professors Reports
- 5 Delivery Systems
 - Quality Management System Committee
 - Civil Engineering Testing Unit (CETU)- ISO 17025:2005
 - CSI (Customer Satisfaction Index)
 - AKA Audit Report
 - SAR / EAC Standard
- 6 Role of External Examiners (Visiting Examiners) and Industry Advisory Panel (IAP)
They are appointed by the Faculty Academic Committee to:
 - Review and evaluate program curriculum.
 - Review and evaluate assessment procedure and methods.
 - Make necessary recommendations to the Academic Committee

7 In general, the programme is realized based on the following approaches:

i. Lectures and Tutorials

The theories are taught through lectures and tutorials according to a fixed schedule.

ii. Laboratory Activities

The laboratory activities include testing and experiments related to the theories taught in the lectures. This is important to enhance the students' understanding of the basic theories and their applications.

iii. Practical Design Session

All design and project-based courses are required to include hands-on design sessions.

iv. Problem Based Learning (PBL)

Problem Based Learning is a very important component of teaching and learning process. PBL is implemented in a number of courses at the Faculty. It helps students to reinforce their understanding of the course contents.

v. Surveying Camp

Apart from the theories learnt during lectures, students are required to attend a two-week survey camp which is conducted outside of the campus during semester break.

vi. Industrial training

All third-year students are required to undergo twelve (12) weeks Industrial Training at civil engineering establishments of their choice. At the end of the training, students are required to submit an Industrial Training Report to the Faculty for assessment purposes.

vii. Civil Engineering Seminar (SEMKA)

This is a compulsory seminar that is organized to expose students to the latest technologies, practical knowledge and techniques that are applied in civil engineering practices. This is one of the methods to disseminate contemporary knowledge that could not be implemented in the traditional lecture settings. The speakers at the seminar are mostly local or foreign professionals.

viii. Integrated Design Project (IDP)

The course is implemented in Year 3 (Integrated Design Project I) and Year 4 (Integrated Design Project II), encompassing Structures, Geotechnics and Infrastructure Design. Numerous related projects work such as Earthwork, Road & Drainage, Erosion & Sedimentation Control Measures and Water Supply Reticulation, providing students with a robust platform to hone design skills.

ix. Final Year Project

As part of the fulfilment for the award of the Bachelor's Degree, students have to complete a Final Year Project under the supervision of academic staff. The project

must be completed within two semesters. Upon the completion of the project the students are required to give an oral presentation and submit a Final Year Project report. Failing to deliver either the oral presentation or the Final Year Project Report will result in failed status.

To enhance the generic skills of the students, the curriculum is designed to address generic skills through infusion or diffusion. By doing so, graduates from this Faculty would be competitive, competent and have high ethical values. The generic skill attributes are as stipulated in the Programme Selection.

4.9 Students' Academic Assessment

As the programme is implemented using the semester system, the performance of students is assessed continuously throughout the semester. The grades are given based on the coursework and the final examination.

5 SEMESTER SYSTEM RULES AND GUIDELINES

5.1 Academic Advisory System and Role of Students

Every student is assigned an academic staff as an academic advisor. The objectives of the academic advisory system are:

- i. To guide and assist students in adapting themselves to the academic system of the University, especially at the initial stage.
- ii. To advise students in solving academic related problems such as workload, selection of courses and to explain the aim and purpose of the courses.
- iii. To identify and provide counselling to problematic students as well as to develop a balanced character and positive attitude among students.
- iv. To act as a link between students and the faculty.

With various services and facilities provided, the faculty expects students to be responsible in their study plan. The academic advisor should not be held responsible for the students' failure in completing their study on time. The students are advised to consult their academic advisor for the following matters:

- i. To obtain information on the semester system and other matters related to their study, during the first week of each semester.
- ii. To obtain endorsement for registration or withdrawal of courses.
- iii. To seek advice in planning for their study, particularly in terms of course selection, total number of credits and duration of study.
- iv. To obtain endorsement for application of graduation award.

5.2 Programme Registration Guidelines

1. Students must register for the programme offered on the date stipulated by the University.
2. If new students do not abide by item 1 without valid reasons acceptable to the University, the offer will be annulled.
3. Students who have been determined to participate in the bridging program must complete the course prescribed before registering for the programme.
4. Registration of the programme or senior students will be automatically done by the University administration based on the previous semester's examination results.
5. Senior students with Deferment of Study Status must re-register for the programme and the courses. Students who failed to do so within the specified time will be terminated from their studies.

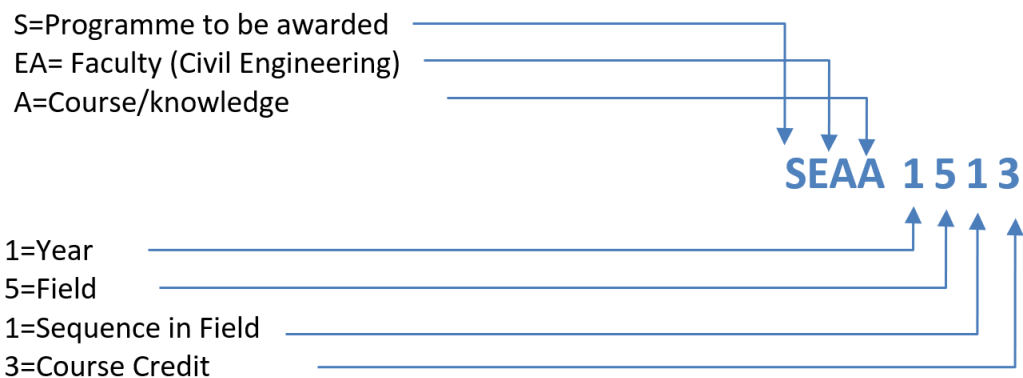
5.3 Course Registration Guidelines

1. Course registration must be completed online during the current semester for the following semester.
2. Course registration is conducted from week 14 to week 15 of the regular semester (subject to amendments). For short semesters, registration must be done in the first week of the short semester.
3. Academic advisors must confirm course registration from week 14 to week 16 (subject to amendments) of the regular semester. For short semesters, confirmation must be done in the first week of the short semester.
4. The university may impose fines on students who register late for courses at rates determined by the Student Financial Regulations from time to time.
5. Students must settle all outstanding debts before registering for courses.
6. Course registration will be automatically cancelled if students receive a "Fail and Terminated (KG)" or "Conditional Status (KS)" result or if they are suspended from studies.
7. Students must register for courses based on the correct timetable, course codes, sections, and status (if applicable), and obtain confirmation from their academic advisor.
8. Course registration statuses (if applicable):
 - a. HS – Registering for courses not listed in the program curriculum for additional knowledge.
 - b. HW – Registering for mandatory courses as specified in the program curriculum.
 - c. KM – Registering for equivalent courses offered at other institutions under a mobility program.
 - d. MN – Registering for courses specified under a minor program offered by the University.
 - e. UG – Registering for courses with grades of B- and below in the previous semester to improve academic performance, subject to faculty approval.
 - f. UK – Registering for courses that were failed in the previous semester for the purpose of repeating them.
9. Registration for students who have received Conditional Status (KS) will be cancelled, and they are required to register again within a specified special registration period.
10. Students who fail to register for courses after the specified registration period will be suspended from studies, except for reasons deemed acceptable by the University.
11. Students are fully responsible for ensuring there are no errors in their course registration records. Corrections must be made within the timeframe specified by the University.
12. Attendance Only Course (HS) Registration:
 - a. With permission or upon faculty instruction, students may register for no more than two (2) courses with HS status in any semester.
 - b. Credits for courses registered with HS status are not counted in GPA and CGPA calculations.
 - c. Students registering for HS status courses must attend all scheduled class meetings and participate in all forms of course assessment.
 - d. HS course status will be recorded in the examination results and student transcripts if they meet the requirement as stated in 13(c).

13. Withdrawal from Courses (TD):
 - a. Students may apply to withdraw from any registered courses after informing the course lecturer and academic advisor.
 - b. Students must submit the withdrawal form to the faculty no later than the last working day of the eighth (8th) week of the respective semester.
 - c. Students are allowed to withdraw from taking a course subject to the minimum credit requirements, except with the Dean's permission.
 - d. TD status will be recorded in the course registration records, examination result slips, and student transcripts.
14. The details regarding course registration can be found in the University Academic Regulations.

5.4 Course Code

Course Code consists of 4 alphabets and 4 digits as description below:



Programme to be awarded

D	=	Diploma
S	=	Bachelors Degree
M	=	Masters
P	=	Doctor of Philosophy
U	=	University's General Courses

5.5 Credit Scheme

5.5.1 Course Credit

Each course has a credit value to signify the importance, learning time and the nature of the course.

5.5.2 Credit Load For Each Semester

- i. Students with Good Status (KB) must register for not less than the total minimum credit, i.e., TWELVE (12) credits and not more than EIGHTEEN (18) credits.
- ii. Students who are in the final TWO (2) semesters of their study are not subjected to item (i)
- iii. Students who wish to take more than EIGHTEEN (18) credits must obtain approval from the Dean. However, students are **NOT** allowed to take more than TWENTY-ONE (21) credits in a semester.
- iv. Students with Conditional Status (KS) are allowed to take between NINE (9) and TWELVE (12) credits only in the following semester.
- v. Students who wish to enroll in a Short Semester are allowed to take a maximum of EIGHT (8) credits only.

5.5.3 Credit Earned

- i. Credit Earned is defined as credit of the Passed course including the Compulsory Attendance (HW) course but not the Hadir Sahaja (HS) course.
- ii. For students who are given Credit Transfer, the Credit Earned is the sum of the total transferred credit and the Passed credit.

5.5.4 Credit Counted

Credit Counted is the credit taken in the current and in all semesters which are used to calculate the GPA and CGPA respectively. The credit of the HS and HW courses are not included in the Credit Counted.

5.5.5 Credit Transfer

- i. Credit transfer can be carried out vertically and horizontally.
- ii. Vertical credit transfer may be granted to students with a diploma recognised by the Senate, with a maximum allowable credit transfer of 30% or 40 credits of the total graduate credits. In general, the minimum acceptable course grade for transfer is a grade of C, subjected to certain course conditions. Applications must be submitted no later than the end of the second week of the first semester of the program. The course credits transferred are counted towards the total graduate credits. However, the course grades are not calculated into the calculation of the student's GPA and CGPA.
- iii. Horizontal credit transfer may apply between accredited/recognized programme of same level, i.e. from Bachelor to Bachelor degree, with a maximum allowable credit transfer of 50% of the total graduate credit. Applications must be submitted no later than the end of the second week of the current semester of the programme. The course credits transferred are counted towards the total graduate credit, and the course grades are calculated into the calculation of the student's GPA and CGPA.
- iv. Rules and regulations regarding Credit Exemption are outlined in the University Academic Regulations.

5.6 Grading System

- i. The performance of a student in a course is represented by the grade obtained. The relationship between the marks, grade and grade point is as listed in Table 1.

Table 1: Relationship between Marks, Grade and Grade Points

Marks	Grade	Grade Points
90 – 100	A+	4.00
80 – 89	A	4.00
75 – 79	A-	3.67
70 – 74	B+	3.33
65 – 69	B	3.00
60 – 64	B-	2.67
55 – 59	C+	2.33
50 – 54	C	2.00
45 – 49	C-	1.67
40 – 44	D+	1.33
35 – 39	D	1.00
30 – 34	D-	0.67
00 – 29	E	0.00

- ii. Table 2 describes the meaning of each grade obtained by students for a course.

Table 2: Course Grade Description

Marks	Grade Points	Grade	Explanation
90 – 100	4.00	A+	Shows an outstanding performance beyond the highest standards. Course content has been fully mastered. Able to apply the knowledge acquired through various approaches and showcase exceptional understanding in a wider and comprehensive context.
80 – 89	4.00	A	Shows an excellent performance that meets the highest standards. Course content has been mastered very well. Able to apply the knowledge gained through various approaches and show clear understanding in a holistic context.
75 – 79	3.67	A-	Demonstrate excellent performance that meets the high standards. Course content has been well-mastered. Able to apply the

			knowledge gained through various approaches and show clear understanding.
70 – 74	3.33	B+	Demonstrate a very good performance that meets the high standards. Course content has been mastered with a holistic understanding of concepts and techniques.
65 – 69	3.00	B	Demonstrate good performance that meets the standards. Course content has been mastered with a good understanding of concepts and techniques.
60 – 64	2.67	B-	Fulfill the standards as well as show a good understanding of the course content and the mastery of course content. Most of the specified course content can be mastered.
55 – 59	2.33	C+	Demonstrate satisfactory understanding of course content. Fulfill or in certain circumstances exceed basic standards.
50 – 54	2.00	C	Demonstrate sufficient understanding of course content and meet basic standards.
45 – 49	1.67	C-	Demonstrate a minimum level of understanding of course content and in certain circumstances do not meet basic standards.
40 – 44	1.33	D+	Demonstrate minimum understanding of the course content.
35 - 39	1.00	D	Demonstrates an understanding of the course content below the minimum level. The student fails the course.
30 – 34	0.67	D-	Demonstrate weak understanding of course content. The student fails the course.
0 – 29	0.00	E	Demonstrate that students cannot understand course content. The student fails the course.

- iii. Table 3 describes the meaning of each grade obtained by students for a practical course.

Table 3: Practical Course Grade Description

Marks	Grade Points	Grade	Explanation
90 – 100	4.00	A+	Excellent <ul style="list-style-type: none"> • Demonstrate excellent knowledge and performance based on the ability to apply theory to practical work • Demonstrate automatic and spontaneous work skills • Master the skills identified excellently
80 – 89	4.00	A	
75 – 79	3.67	A-	
70 – 74	3.33	B+	Good <ul style="list-style-type: none"> • Demonstrate good knowledge and performance based on the ability to apply theory to practical work • Demonstrate skillful, optimal and efficient work skills • Master the identified skills well
65 – 69	3.00	B	
60 – 64	2.67	B-	
55 – 59	2.33	C+	Average <ul style="list-style-type: none"> • Demonstrate average knowledge and performance based on the ability to apply theory to practical work • Demonstrate work skills with minimum guidance • Master the identified skills moderately
50 – 54	2.00	C	
45 – 49	1.67	C-	
40 - 44	1.33	D+	Weak <ul style="list-style-type: none"> • Demonstrates weak knowledge and performance in applying theory to practical work. Carries out tasks with full guidance. Lacks proficiency in mastering identified skills.
35 – 39	1.00	D	
30 – 34	0.67	D-	
0 – 29	0.00	E	Fail <ul style="list-style-type: none"> • Failure to demonstrate knowledge in applying the theory to practical work • Not able to perform the work even with guidance • Failure to master identified skills

- iv. Generally, Grade D+ is the minimum passing grade. However, the passing grade of a course is subjected to the requirements of the Faculty with the Senate’s approval.

- v. Besides the grades listed above, the following grading in table 4 is also used:

Table 4: Description of Grade Points without Value

Grade	Explanation
HS (Audit)	Grade given for courses registered with HS status
HL (Pass)	Passing grade given to course registered with HW status
HG (Fail)	Failing grade given to course registered with HW status

- vi. Grade for Industrial Training is Pass (HL) or Fail (HG).

5.7 Assessment System

5.7.1 Attendance Requirement

- i. Students must attend all forms of scheduled face-to-face learning activities (lectures/practical/studio/fieldwork etc.). If students do not attend these activities, they will have to inform their lecturers immediately and provide reasons for their absence.
- ii. Lecturers need to report to the Faculty if there are students who have been absent for more than 20% of the total scheduled contact hours of learning activities.
- iii. The Faculty needs to issue a warning letter to the students after receiving a report from lecturers.
- iv. Students who attend less than 80% of the total scheduled contact hours of a course in a semester without any reason acceptable to the University, are not allowed to attend all subsequent forms of scheduled face-to-face learning activities and sit for any form of assessment. ZERO (0) mark will be awarded for the said courses; or Fail (HG) for compulsory audit courses (HW) and courses registered as audit (HS) will not be recorded in the transcript.
- v. The Faculty will inform the students in writing of the results of the action as stated in item (iv).

5.7.2 Assessment Scheme

- i. Ongoing assessment of a course will be done through coursework, final examinations and other forms of assessment during the semester of study according to the methods and weightings determined by the Faculty.
- ii. Assessment for Industrial Training and Final Year Project is based on the format determined by the Faculty.
- iii. For courses that are assessed based on coursework and final examination, the coursework mark must not be less than 50% of the total marks whereas the final examination mark should not exceed 50% unless approval has been obtained from the Faculty.
- iv. Assessment of courses based on 100% coursework can be implemented with the approval of the Faculty.
- v. Application for approval by the course coordinator/lecturer for Item (iv) should be made before the semester begins.

5.7.3 Final Examination

The final examination must be conducted within a specific time frame, according to guidelines set by the University as in Appendix IV.

5.7.4 Special Examination

1. Special Examination can be held for the following cases:
 - i. Students who are unable to sit for the final examination because of illness and validated by a medical officer from the university or government hospital or have given reasons accepted by the university; or
 - ii. Students in their final semester who have passed with Good Status (KB) but failed in ONE (1) course taken in the last TWO (2) semesters of study not including the semester used for Practical/Industrial Training.
2. The special examination mark will be used to determine the results of the course based on the following:
 - i. The special examination mark as in para (1) (i) will be used to replace the previous final examination mark whereas the coursework marks remain the same.
 - ii. Students as in para (1) (ii) who have passed the special examination with a grade D + or a passing grade set by the faculty will be calculated as part of their GPA and CGPA. Students who have been given Grade D will have to repeat the course.
3. Special Examination will not be held for the following cases:
 - i. Courses that have no final examination; or
 - ii. Students who did not sit for the final examination and gave reasons that are not accepted by the university; or
 - iii. Students who have been barred from sitting for the final examination.
4. Special Examination will only be conducted once in a semester unless with the approval of the Senate.
5. Students who fail to sit for the Special Examination for item (5.7.4 (1)) will be given ZERO (0) mark for the final examination.

5.7.5 Appeal On the Results

If students are not satisfied with the results of the review of their scripts, they may apply for a course grade appeal. The script will be reassessed and re-marked. Students may only apply for a course grade appeal after they have reviewed and discussed the answer scripts with the respective lecturers.

5.8 Conferment Result

- i. A student's performance is assessed based on the TWO (2) measurements GPA and CGPA which are as follow:

$$\text{GPA} = \frac{\text{Total Grade Point per Semester}}{\text{Total No. of Attempted Credit per Semester}}$$

$$\text{CGPA} = \frac{\text{Total Credit Point for all Semesters}}{\text{Total No. of Credit Counted of all Semesters}}$$

- ii. The academic standing of a student at the end of every semester is based on the CGPA as shown in Table 5 below:

Table 5: Conferment Result Based on CGPA

Status	CGPA
Good Status (KB)	CGPA \geq 2.00
Conditional Status (KS)	1.70 \leq CGPA < 2.00
Fail Status (KG) (Study Terminated)	CGPA < 1.70

- iii. Students who obtain GPA < 1.00 even though the CGPA \geq 1.70 may continue their studies. However, the senate can:
- Defer their studies to the following semester: or
 - Give a Fail Status (KG) and terminate their studies.
- iv. Students who obtained THREE (3) consecutive Conditional Status (KS) will be given a Fail Status (KG) and they will be terminated from their studies.
- v. Students who have completed their studies but do not meet the requirements of the award will be given a Fail Status (KG) and terminated from their studies.
- vi. The academic standing of a student for the Short Semester will not be ascertained. The grade obtained in that semester will be considered for the calculation of the CGPA in the first semester of the following session.
- vii. The status of the student's academic standing who enroll in the student mobility programme outside UTM with the Unfinished Status (Student Mobility) TS(KM) for that semester is not specified. Grades obtained in the semester will be considered for the calculation of CGPA in the next semester.
- viii. Students may be given a temporary result if they do not meet the requirements of the University as shown in Table 6.

Table 6: Conferment Result

Status	Description
KB (BM)	Students are in Good Status and pass all courses required in the curriculum of the programme but have not fulfilled the Bahasa Melayu requirement
KB (MU)	Students are in Good Status and pass all courses required in the curriculum of the programme but have not sat for MUET
KB (TK)	Students are in Good Status and pass all courses required in the curriculum of the programme but have not applied for an award of a degree
KB (PSC)	Students are in Good Status and pass all courses required in the curriculum of the programme but have not fulfilled the requirements of PSC
TS	No final examination/evaluation mark in at least one course for the student and must be completed within the current semester
TS (KM)	No mark because students enroll in the mobility programme and need to be completed within the current semester of next regular semester

5.8.1 Improving Academic Performance

- i. Students are given the chance to improve their grades with the faculty's approval during their study according to the following conditions:
 - a. obtain faculty's approval;
 - b. improve the grade of the course which is B- and below;
 - c. allowed to improve only once the grade of the course;
 - d. the better grade between the original and the latest grade will be used in the GPA and CGPA calculation; and
 - e. request for improving grade will have to be accompanied with grade improvement registration payment determined by the Senate.
- ii. Students who have completed their study but have not fulfilled the requirements for an award such as Good Status (KB) (Completed Program) will not be allowed to improve the grade of their course.

5.9 Computation of GPA and CGPA

- i. Grade Point Average (GPA):
 - a. The GPA is the average grade points obtained in a semester.
 - b. The GPA is calculated as follows:

$$\text{GPA} = \frac{\text{Total Grade Points (TGP)}}{\text{Total Credit Count (TCC)}}$$

$$\text{GPA} = \frac{k_1 m_1 + k_2 m_2 + \dots}{k_1 + k_2 + \dots}$$

$$\begin{aligned} \text{Total Grade Points (TGP)} &= k_1 m_1 + k_2 m_2 + \dots \\ \text{Total Credit Counted (TCC)} &= k_1 + k_2 + \dots \end{aligned}$$

$$\begin{aligned} k_1, k_2, \dots &= \text{Credit value for each course taken} \\ m_1, m_2, \dots &= \text{grade points obtained for each course taken} \end{aligned}$$

- iii. Cumulative Grade Points Average (CGPA)
 - a. The CGPA is the grade point average obtained overall semesters
 - b. The CGPA is calculated as follows:

$$\text{CGPA} = \frac{\text{Total Grade Points (TGP)}}{\text{Total Credit Count (TCC)}}$$

$$\text{CGPA} = \frac{\text{TCP}_1 + \text{TCP}_2 + \dots}{\text{TCC}_1 + \text{TCC}_2 + \dots}$$

$$\begin{aligned} (\text{TGP}) &= \text{TCP}_1 + \text{TCP}_2 + \dots = \text{Total Credit Points obtained in each semester} \\ (\text{TCC}) &= \text{TCC}_1 + \text{TCC}_2 + \dots = \text{Total Credit Counted in each semester} \\ \text{Total Credit Counted for semester 1} &= 15 \\ \text{Total Grade Counted for semester 1} &= 55.55 \end{aligned}$$

Example of CGPA calculation

Course	Credit Counted (k)	Marks (%)	Grade	Grade Point (m)	Total Grade Points (k _i m _i)
SEAA 1023	3	86	A	4.00	12.00
SEAA 1422	2	80	A	4.00	8.00
SEAA 1513	3	86	A	4.00	12.00
SSCE 1793	3	76	A-	3.67	11.01
SSCE 1993	3	72	B+	3.33	9.99
UICI 1012	2	86	A	4.00	8.00
UKQ# 2##2	2	90	A+	4.00	4.00
	18				65.00

Total Credit Counted (TCC) for semester 2 = 18

Total Grade Points (TGP) for semester 2 = 65.00

$$\text{GPA for semester 2} = \frac{65.00}{18} = 3.61$$

$$\text{CGPA for semester 2} = \frac{55.00 + 65.00}{15 + 18} = 3.75$$

iii. Example of GPA calculation for first year student:

Semester 1

Course	Credit Counted (k)	Marks (%)	Grade	Grade Point (m)	Total Grade Points (k _i m _i)
SEAA 1012	2	78	A-	3.67	7.34
SEAA 1213	3	72	B+	3.33	9.99
SEAA 1713	3	80	A	4.00	12.00
SSCE 1693	3	75	A-	3.67	11.01
ULAB 1122	2	89	A	4.00	8.00
UHAS 1172	2	71	B+	3.33	6.66
	15				55.00

Total Credit Counted (TCC) = 15

Total Grade Points (TGP) = 55.00

$$\text{GPA} = \frac{\text{Total Grade Points (TGP)}}{\text{Total Credit Count (TCC)}} = \frac{55}{15} = 3.67 \text{ for semester 1, CGPA = GPA}$$

5.10 Status of Students' Academic Year

Students' academic year will be determined by the faculty according to the total Credit Earned as shown in Table 7.

Table 7: Classification of students CREDIT FOR

Classification of students	Total of Normal Credits Earned Year Before	Total Credits Must Be Earned for the Semester
Second Year	32	29
Third Year	67	61
Fourth Year	100	91

5.11 Award and Recognition

The Dean's List

A student who obtains a GPA of 3.67 and above will be awarded a Dean's List Certificate, if he/she has registered for at least 12 credit hours for that semester excluding courses with HS and HW status. The remark "Dean's List" will be printed on the student's transcript.

5.12 Deferment of Study

- i. A student who has been diagnosed as having illness by a Medical Officer of the or by any Government Hospital is entitled to request for deferment of study. This deferment will not be counted as part of the total number.
- ii. The maximum length for deferment for each application is TWO (2) continuous semesters. However, if the student requires more than FOUR (4) continuous semesters, the case will be referred to the University Medical Panel to decide whether this student will be allowed to continue with the study or have his study terminated.
- iii. A student can also request for deferment of study for non-medical reasons. The application must be made before the last working day of week NINE (9) of the semester. The non-medical deferment period will be counted as part of the total number of semesters in the calculation of his/her maximum Duration of Study.
- iv. However, the deferment period may be waived from being counted in the student's maximum Duration of Study, apart from the mentioned cases as follows:
 - a. For a student who is deferred by the University due to obtaining a GPA < 1.00 in the previous semester.
 - b. For a student who is deferred by the University due to disciplinary action.
 - c. For a student who is deferred from their studies for reasons of national interest. However, the maximum allowable period is only two (2) years, which is four (4) semesters. For each deferment application, the University will approve the application for a period of two (2) semesters, and students may apply for an extension of the deferment, if necessary, subject to a maximum of four (4) semesters.
 - d. For a student who is deferred from their studies for participating in a Gap Year program.
 - e. For a student who is deferred from their studies due to no courses are offered in that semester.
 - f. For a student who is deferred from their studies due to emergency reasons.

5.13 Students' Code of Attire

- i. Students must be neatly, tidily, and appropriately dressed according to the common practice of Malaysian society.
- ii. Students must dress decently (shirts, T-shirts with collar, shoes, slacks, long skirts below the knees) especially during lectures and official functions at the Faculty/administrative building.
- iii. Students should avoid dressing indecently in public by wearing inappropriate clothing such as:
 - a. Skirts or shorts that are at or above the knee level.
 - b. T-shirts without collars
 - c. Sleeveless clothes
 - d. Tight trousers or skirts
 - e. Flip-flops/sandals/slippers
- iv. Male students attending formal university functions must dress neatly in clothes such as long sleeve shirt, necktie, slacks (not jeans), leather shoes or complete national attire. Female students are required to dress in Baju Kurung or in loose clothes such as long skirts that go below the knees or loose trousers.
- v. Female students are not allowed to wear clothes that cover their faces (purdah).
- vi. During official University functions, students are not allowed to wear cap or bandana.
- vii. Male students are not allowed to keep long hair (reaching the collar, covering the ears, and reaching the eyebrows), have ponytails, dyed hair and untidy hairstyles.
- viii. Male students are not allowed to dress in female attire and vice-versa.
- ix. Male students are not permitted to wear bangles, ear studs, necklaces and earrings or any jewelry whereas female students should not have pierced body parts other than the ones accepted as the norms of the Malaysian society.
- x. Tattoos are not permitted on any part of the body.
- xi. Participation in the laboratories, sports and cultural activities require students to be appropriately dressed according to the Rules and Regulations set by the University.
- xii. Students are required to wear matriculation card within the vicinity of the University or university owned premises inclusive of rented premises. The card must be worn and displayed around the chest area.

5.14 General Provisions

- i. All Academic Rules and Regulations must be observed. The Senate is entitled to the Rules and Regulations as deemed appropriate.
- ii. Should any dispute arise, the regulations stated in the University Academic Regulations will apply.
- iii. The information in this book is correct at the time it is published.

6 CURRICULUM AND SYLLABUS

6.1 Area of Study

In general, civil engineering deals with the design, construction and maintenance of the physical and natural built environment including works such as bridges, roads, canals, dams, and buildings. It also includes water resources management, water works, waste management, and environmental pollution control for the use and benefit of mankind. Civil engineering programme at UTM encompasses the following areas of study:

- i. Science and Mathematics**
Science and Mathematics courses are required to prepare students with strong fundamentals, which are prerequisites to the engineering fields.
- ii. Civil Engineering**
Students will be given basic training and knowledge in civil engineering study. The courses cover four main areas in civil engineering, namely structures and materials, geotechnics and transportation, hydraulics, hydrology and water resources, and environmental engineering and management.
- iii. Civil Engineering Elective Courses**
Final Final-years are required to take three advanced courses in the civil engineering field which are equivalent to courses offered at the graduate level elective courses to develop an area of expertise which is of interest to the students.
- iv. Humanities and Social Science Courses**
Humanities and social science courses are taught to students as the basis for moral education towards becoming responsible, dedicated, and ethical, as well as competent individuals. Courses in these areas also enable students to understand and appreciate the values and diverse cultures of various races in Malaysia and other nations.
- v. Co-curricular Courses**
Students are required to attend co-curricular courses of their choice. The courses are developed to instill leader hostilities as well as to produce resilient individuals.

6.2 Curriculum of Bachelor of Civil Engineering with Honours

The curriculum for the Bachelor of Civil Engineering with Honours is given in the following tables. The courses are arranged according to the semester in which they are offered. Students are strongly encouraged to enrol in the courses according to the proposed arrangement. Students may not graduate on time should they fail or withdraw from the courses offered.

6.2.1 Course Menu for Group 1

COURSE MENU FOR GROUP 1

Year 1 Semester 1

Code	Course	Credits	L	T	P / S	L a b
SEAA 1011	Introduction to Civil Engineering	1	1			
SEAA 1213	Engineering Mechanics	3	3	1		
SEAA 1513	Fluid Mechanics	3	3	1		
SSCE 1693	Engineering Mathematics I	3	3	1		
ULRS1182	Appreciation Of Ethics & Civilizations	2	2			
UHLM 1012	Malay Language for Communication 2 (International students)	2	2			
SEAA 2112	Civil Engineering Materials	2	2			
Total Credits		14				
Cumulative Credits		14				

Year 1 Semester 2

Code	Course	Credits	L	T	P / S	L a b
SEAA 1023	Engineering Surveying	3	3			
SEAA 1422	Engineering Drawing	2	1		2	
SEAA 1713	Soil Mechanics	3	3	1		
SSCE 1793	Differential Equations	3	3	1		
SSCE 1993	Engineering Mathematics II	3	3	1		
ULRS 1012	Value and Identity	2	2			
Total Credits		16				
Cumulative Credits		30				

Year 1 Short Semester

Code	Course	Credits	P/S
SEAA 1031	Surveying Camp	1	2 weeks
Cumulative Credits		31	

Year 2 Semester 1

Code	Course	Credits	L	T	P / S	L a b
SEAA 2012	Civil Engineering Laboratory 1	2				4
SEAA 2032	Mechanical and Electrical Systems	2	2			
SEAA 2513	Hydraulics	3	3	1		
SEAA 2722	Geotechnics 1	2	2	1		
SEAA 2832	Highway Engineering	2	2	1		
SEAA 2912	Water Treatment	2	2	1		
SSCE 2393	Numerical Methods	3	3	1		
UHLB 2122	Academic Communication Skill	2	2			
Total Credits		18				
Cumulative Credits		49				

Year 2 Semester 2

Code	Course	Credits	L	T	P / S	L a b
SEAA 2223	Mechanics of Materials and Structures	3	3	1		
SEAA 2413	Computer Programming	3	2	2		
SEAA 2712	Engineering Geology and Rock Mechanics	2	2	1		
SEAA 2922	Wastewater Engineering	2	2	1		
SSCE 2193	Engineering Statistics	3	3	1		
ULRF 2**2	Service Learning & Engagement Courses	2	2			
ULRS 1022	Philosophy & Current Issues (Local students)	2	2			
Total Credits		17				
Cumulative Credits		66				

Year 3 Semester 1

Code	Course	Credits	L	T	P / S	L a b
SEAA 3123	Construction Technology, Contract & Estimating	3	3			
SEAA 3243	Theory of Structures	3	3			
SEAA 3313	Reinforced Concrete Design 1	3	2		2	
SEAA 3412	Building Information Modelling and Data Management	2	1	2		
SEAA 3712	Geotechnics 2	2	2			
UHLX 1**2	Foreign Language for Communication	2	2			
ULRS 3032	Entrepreneurship & Innovation	2	2			
Total Credits		17				
Cumulative Credits		83				

Year 3 Semester 2

Code	Course	Credits	L	T	P / S	L a b
SEAA 3012	Civil Engineering Laboratory 2	2				4
SEAA 3022	Integrated Design Project 1	2			4	
SEAA 3323	Structural Steel & Timber Design	3	2		2	
SEAA 3613	Hydrology and Water Resources	3	3			
SEAA 3842	Traffic Engineering	2	2			
SEAA 3913	Environmental Management	3	3			
UHLB 3132	English for Professional Purpose	2	2			
Total Credits		17				
Cumulative Credits		100				

Year 3 Short Semester

Code	Course	Credits	P/S
SEAA 3045	Industrial Training	5	12 weeks
Cumulative Credits		105	

Year 4 Semester 1

Code	Course	Credits	L	T	P / S	Lab
SEAA 4021	Civil Engineering Seminar	1	1			
SEAA 4022	Research Methodology and Pre-Project	2	2		2	
SEAA 4223	Structural Analysis	3	3			
SEAA 4##3	Elective 1	3	3			
SEAA 4##3	Elective 2	3	3			
***3	Free Elective	3	3			
Total Credits		15				
Cumulative Credits		120				

Year 4 Semester 2

Code	Course	Credits	L	T	P / S	Lab
SEAA 4032	Integrated Design Project 2	2	2		2	
SEAA 4034	Final Year Project	4			12	
SEAA 4113	Constructions & Project Management	3	3			
SEAA 4333	Reinforced Concrete Design 2	3	2		2	
SEAA 4##3	Elective 3	3	3			
Total Credits		15				
Cumulative Credits		135				

Professional Skills Certificate

Code	Course	Credits	L	T	P / S	Lab
GLRB0010	Design Thinking for Entrepreneur (DTE)					
GLRM0010	Talent and Competency Management (TCM)					
GLRL0010	English Communication Skill for Graduating Students (ECS)					
GLRT####	Elective Course 1					
GLRT####	Elective Course 2					

Subject to change

Notes :- L - Lecture; T - Tutorial; P/S - Practical/Studio; Lab – Laboratory

6.2.2 Course Menu for Group 2

COURSE MENU FOR GROUP 2

Year 1 Semester 1

Code	Course	Credits	L	T	P / S	L a b
SEAA 1011	Introduction to Civil Engineering	1	1		1	
SEAA 1023	Engineering Surveying	3	3			
SEAA 1422	Engineering Drawing	2	1		2	
SEAA 1713	Soil Mechanics	3	3	1		
SSCE 1693	Engineering Mathematics I	3	3	1		
ULRS1182	Appreciation Of Ethics & Civilizations	2	2			
UHLM 1012	Malay Language for Communication 2 (For International Students Only)	2	2			
Total Credits		14				
Cumulative Credits		14				

Year 1 Semester 2

Code	Course	Credits	L	T	P / S	L a b
SEAA 1213	Engineering Mechanics	3	3	1		
SEAA 1513	Fluid Mechanics	3	3	1		
SSCE 1793	Differential Equations	3	3	1		
SSCE 1993	Engineering Mathematics II	3	3	1		
ULRS 1012	Value and Identity	2	2			
SEAA 2112	Civil Engineering Materials	2	2			
Total Credits		16				
Cumulative Credits		30				

Year 1 Short Semester

Code	Course	Credits	P/S
SEAA 1031	Surveying Camp	1	Two weeks
Cumulative Credits		31	

Year 2 Semester 1

Code	Course	Credits	L	T	P / S	L a b
SEAA 2223	Mechanics of Materials and Structures	3	3	1		
SEAA 2413	Computer Programming	3				
SEAA 2712	Engineering Geology and Rock Mechanics	2	2	1		
SEAA 2922	Wastewater Engineering	2	2	1		
SSCE 2193	Engineering Statistics	3	3	1		
ULRF 2**2	Service Learning & Engagement Courses	2				
ULRS 1022	Philosophy & Current Issues (Local student)	2	2			
Total Credits		17				
Cumulative Credits		48				

Year 2 Semester 2

Code	Course	Credits	L	T	P / S	L a b
SEAA 2012	Civil Engineering Laboratory 1	2				4
SEAA 2032	Mechanical and Electrical Systems	2	2			
SEAA 2513	Hydraulics	3	3	1		
SEAA 2722	Geotechnics I	2	2	1		
SEAA 2832	Highway Engineering	2	2	1		
SEAA 2912	Water Treatment	2	2	1		
SSCE 2393	Numerical Methods	3	3	1		
ULHB 2122	Academic Communication Skills	2	2			
Total Credits		18				
Cumulative Credits		66				

Year 3 Semester 1

Code	Course	Credits	L	T	P / S	L a b
SEAA 3012	Civil Engineering Laboratory 2	2				4
SEAA 3022	Integrated Design project 1	2			2	
SEAA 3323	Structural Steel & Timber Design	3	2		2	
SEAA 3613	Hydrology and Water Resources	3	3			
SEAA 3842	Traffic Engineering	2	2			
SEAA 3913	Environmental Management	3	3			
ULHB 3132	English for Professional Purpose	2				
Total Credits		17				
Cumulative Credits		83				

Year 3 Semester 2

Code	Course	Credits	L	T	P / S	L a b
SEAA 3123	Construction Technology, Contract & Estimating	3	3			
SEAA 3243	Theory of Structures	3	3			
SEAA 3313	Reinforced Concrete Design I	3	2		2	
SEAA 3412	Building Information Modelling and Data Management	2	1		2	
SEAA 3712	Geotechnics II	2	2			
UHLX1**2	Foreign Language for Communication	2	2			
ULRS 3032	Entrepreneurship & Innovation	2	2			
Total Credits		17				
Cumulative Credits		100				

Year 3 Short Semester

Code	Course	Credits	P/S
SEAA 3045	Industrial Training	5	12 weeks
Cumulative Credits		105	

Year 4 Semester 1

Code	Course	Credits	L	T	P / S	Lab
SEAA 4022	Research Methodology and Pre-Project	2	2		2	
SEAA 4032	Integrated Design Project 2	2	2		2	
SEAA 4113	Constructions & Project Management	3	3			
SEAA 4333	Reinforced Concrete Design 2	3	2		2	
SEAA 4##3	Elective I	3	3			
SEAA 4##3	Elective II	3	3			
Total Credits		16				
Cumulative Credits		121				

Year 4 Semester 2

Code	Course	Credits	L	T	P / S	Lab
SEAA 4021	Civil Engineering Seminar	1	1			
SEAA 4034	Final Year Project	4			12	
SEAA 4223	Structural Analysis	3	2			1
SEAA 4##3	Elective III	3	3			
***3	Free Elective	3	3			
Total Credits		14				
Cumulative Credits		135				

Professional Skills Certificate

Code	Course	Credits	L	T	P / S	Lab
GLRB0010	Design Thinking for Entrepreneur (DTE)					
GLRM0010	Talent and Competency Management (TCM)					
GLRL0010	English Communication Skill for Graduating Students (ECS)					
GLRT####	Elective Course 1					
GLRT####	Elective Course 2					

Subject to change

Notes :- L - Lecture; T - Tutorial; P/S - Practical/Studio; Lab – Laboratory

6.3 List of Faculty's Elective Courses

6.3.1 Elective Courses

Apart from the core course, students must also take 9 credits of elective course.

1. **Materials, Management and Construction**

SEAA 4013	Advanced Engineering Survey
SEAA 4143	Construction Plants and Equipment
SEAA 4153	Offshore Structures
SEAA 4163	Concrete Technology

2. **Structural Analysis and Design**

SEAA 4243	Finite Element Method
SEAA 4263	Earthquake and Wind Engineering
SEAA 4323	Prestressed Concrete Design
SEAA 4373	Bridge Engineering
SEAA 4383	Analysis and Design of Tall Building Systems

3. **Hydraulics and Hydrology**

SEAA 4513	Hydraulic Engineering Structures
SEAA 4523	Introduction to Coastal Engineering
SEAA 4613	Water Resources Management
SEAA 4623	Climate Change and Civil Engineering

4. **Geotechnics and Transportation**

SEAA 4723	Engineering Rock Mechanics
SEAA 4733	Advanced Foundation Engineering
SEAA 4753	Geological Engineering and Environment
SEAA 4813	Pavement Design and Construction
SEAA 4823	Transportation Engineering and Planning
SEAA 4853	Railway Engineering

5. **Environmental Engineering**

SEAA 4923	Advanced Water and Wastewater Treatment
SEAA 4943	Municipal Solid Waste Management
SEAA 4973	Industrial and Hazardous Waste Treatment
SEAA 4983	Water Quality Management

6.3.2 PRISMS Elective Courses

Only students with a minimum CGPA of 3.3 are eligible to enrol in the PRISMS program. This program offers the following elective courses, which are associated with the postgraduate program.

1. Construction Management

SEAA 5113	Construction Law and Contract
SEAA 5123	Construction Site Management and Safety Control
SEAA 5133	Sustainability & Environmental Management in Construction

2. Project Management

SEAA 5143	Fundamental of Project Management
SEAA 5153	Planning and Scheduling
SEAA 5163	Project Financial Management

3. Structure

SEAA 5213	Advanced Structural Analysis and Modelling
SEAA 5233	Structural Dynamics
SEAA 5313	Advanced Design of Reinforced Concrete
SEAA 5323	Advanced Design of Steel Composite Structures

4. Hydraulics and Hydrology

SEAA 5513	Advanced Hydraulics
SEAA 5613	Advanced Hydrology
SEAA 5623	Urban Stormwater Management

5. Geotechnics

SEAA 5713	Advanced Soil Mechanics
SEAA 5723	Advanced Geotechnical Analysis and Design
SEAA 5733	Slope Engineering

6. Transportation

SEAA 5813	Highway and Infrastructure Design
SEAA 5823	Advanced Road Material
SEAA 5833	Traffic Management and Analysis

7. Environmental

SEAA 5913	Environmental Management and Sustainability
SEAA 5923	Land Use and Environmental Planning
SEAA 5933	Air and Noise Pollution

6.4 Synopsis of Core Courses

6.4.1 First Year

SEAA 1011 - Introduction to Civil Engineering

This course is only offered in the 1st Semester to all new students at the Faculty of Civil Engineering. As part of the course, the student will be introduced to the major disciplines in civil engineering and the engineer's responsibility to society. The experts of the respective fields of Structural Engineering, Transportation and Geotechnical Engineering, Hydraulics and Hydrology, and Environmental Engineering will highlight their respective sub-disciplines. Students are also exposed to generic engineering skills such as teamwork, decision making, and communication through lectures, assignments, and project.

SEAA 1023 - Engineering Surveying

This course provides the basic theory and practice of surveying to civil engineering students. Methods of establishing horizontal & vertical control for construction and design are explained, compared, and practiced via fieldwork. Since accuracy of survey work is vital in ensuring designs are exactly positioned, students must be able to analyze errors so that standard accuracies are met. Detailing for producing site plans, area and volume estimations, road curves geometric design is also discussed. The concept of field survey automation and the usage of software are explained. At the end of the course, students are expected to be able to plan, execute, compute, and analyze surveying works involved in establishing horizontal & vertical controls and producing plans for civil engineering applications. Students should also be able to geometrically design horizontal and vertical curves according to standards, perform area calculations and volume estimation for earthwork activities in civil engineering.

SEAA 1031 - Surveying Camp

Pre-requisite: SEAA 1023 Engineering Surveying

After successfully completing course SKAA 1023, students are well exposed to the theory and practice of surveying. Nevertheless, surveying projects that were undertaken so far are 'stand- alone' projects with emphasis on the understanding of the concepts involved. Therefore, this subject provides training for the surveying work involved in a typical civil engineering project. In other words, this subject gives a holistic view of the surveying activities needed prior to and during the construction stage of a civil engineering project. The course will furthermore train students in planning and executing survey work on a larger scale. The surveying works involved depend on the type of project undertaken, but normally include establishing horizontal and vertical controls, detailing, earthwork calculations and setting out. Students are assessed based on their oral presentation and written reports submitted at the end of the course. This subject introduces the basics and concepts of surveying in general with emphasis on engineering surveying. Basic surveying needs commonly required in civil engineering are explained. Methods of establishing horizontal & vertical controls, detailing for producing site plans, area and volume estimations, road curves geometric design and setting out are discussed.

Students are introduced to the typical field tasks as required in civil engineering. Common methods of field procedures, bookings and reduction of observations are adopted. Students are expected to be able to establish horizontal and vertical controls, setting out and detailing. The importance of surveying field activities prior to the design and during the construction stages in civil engineering work is highlighted. Since accuracy of survey work is vital in ensuring designs are exactly positioned, students must be able to conduct survey works that meet standard accuracies.

SEAA 1213 - Engineering Mechanics

The course is designed to expose the students to the basic principles of statics and dynamics. The subject is divided into two parts: Mechanics of Statics and Mechanics of Dynamics. The content of the lecture will be emphasized on the application of the basic mechanics principle in civil engineering. Mechanics of Statics deals with equilibrium of bodies, i.e., bodies at rest and bodies moving with a constant velocity. It includes resultant and resolution of forces, equilibrium of a particle, force system resultant, equilibrium of rigid bodies, the center of gravity and centroid, and moment of inertia of an area. Mechanics of Dynamics deals with the accelerated motion of bodies. It includes kinematics and kinetics of a particle and of a rigid body. Kinematics discusses the relationship between displacement, velocity, and acceleration against time. Kinetics covers the concepts of force and acceleration (Newton's second law of motion), energy and work, impulse and momentum, and vibration. At the end of the course, students should be able to incorporate and utilize principles of applied mechanics in civil and structural engineering problems.

SEAA 1422 - Engineering Drawing

This course is designed to expose the students to the basic understanding of technical and engineering drawings. It will cover the aspect of understanding and interpretation of the element of drawings. The concept of orthographic and isometric projection will be discussed and applied in the hands-on session with Computer Aided Drawing (CAD). Students will also be exposed to the civil works drawings, i.e. reinforced concrete detailing. Several exercises are performed with the use of CAD to get the students acquaintance of the software. During this session, students will be asked to draw and submit group projects that are given to them. After completing this course students should be able to produce civil engineering drawings using Cad in 2D and 3D.

SEAA 1513 - Fluid Mechanics

This course is designed to introduce and apply the concepts of Fluid Mechanics (fluid statics and kinematics, forces and flow in closed conduits, pipe networks and centrifugal pumps) and to solve problems related to Civil Engineering. It encompasses topics such as fluid statics and fluid dynamics. The pressures and forces in these static and dynamic fluids are introduced, discussed, and analyzed through equations. It also covers upon the analyses of flows in closed conduits to include minor and major head losses. The performance characteristics, functions, and applications of centrifugal pumps in pipeline systems are also demonstrated and analyzed in this course.

SEAA 1713 - Soil Mechanics

This subject is a compulsory subject for civil engineering students. The content of this subject will give a student basic understanding and exposure towards practical in Geotechnical Engineering. It will cover basic soil properties which consists of soil composition, soil classification and soil compaction. Besides that, it will also discuss vertical stresses in soil due to overburden and external loading, water in soil and soil shear strength. The topic that will be covered is important to civil engineers where most of the problems occur at site will involve geotechnical and soil mechanics. At the end of this subject, students will be able to apply the knowledge on basic soil properties, soil classification and compaction properties, water in soil and shear strength parameters in the planning, analysis, design, and supervision of related geotechnical works.

6.4.2 Second Year

SEAA 2012 - Civil Engineering Laboratory 1

Civil engineering is a practical field and laboratory work is essential to be performed by students in this field. The laboratory work, which consists of workshops and experiments, is designed to expose students' essential problem solving and experimental techniques. Most of the generic attributes that the students must develop at the University are acquired through laboratory experiments and researches. Laboratory sessions can strengthen the students to relate the fundamental theories with laboratory experiments in the field of concrete, transportation, hydraulics, and structural engineering. Each student will experience data collection and perform data analysis and result interpretations. Application of the experimental results to the real civil engineering problem will be highlighted. Upon completion of the course, students are expected to be able to perform laboratory experimental work and investigation in concrete, transportation, hydraulics, and structural engineering, to develop the techniques of conducting measurements, data analysis and interpret results in written report, and to develop generic attributes and enhance their ability to participate effectively in a laboratory environment and be able to work as part of a team.

SEAA 2032 - Mechanical and Electrical Systems

This course is a service course from the Faculty of Mechanical Engineering & the Faculty of Electrical Engineering. The course will expose civil engineering students to the fundamentals of Mechanical & Electrical building services. The topics to be covered in the Mechanical Portions are design of Domestic Water Supply System, Fire Prevention System, Ventilation and Air-Conditioning System and Lift and Escalators System. Students will be exposed more to design using professional charts and codes and catalogues from manufacturers. The electrical portion of the course covers single phase and three phase system followed by an insight to transformer and induction motor operation. The electrical section will also cover the commercial practice of electrical wiring and substation design. At the end of the course, students should be able to demonstrate an understanding of electrical systems and machines' operation and the ability to design domestic wiring systems.

SEAA 2112 - Civil Engineering Materials

This course is designed for students to understand the different types of construction materials used in civil engineering. It will emphasize on types, properties, and function of cement, aggregates, water, admixtures in concrete; properties of fresh and hardened concrete, concrete mix design method, manufacturing concrete on site; test of hardened concrete; timber - properties, characteristics, manufacturing, and applications, masonry - types and characteristics of brick and block, mortar in masonry work, ferrous and non-ferrous metal, and other latest materials in construction industry. At the end of the course students should be able to describe, identify and discuss the properties and behavior of different types of civil engineering materials together with selecting the right materials for applications in practice.

SEAA 2223 - Mechanics of Materials and Structures

Pre-requisite: SEAA 1213 Engineering Mechanics

This is a core subject. Students will be able to understand the basic theory of the fundamental principles of mechanics of materials. Students will be able to incorporate these basic fundamentals into the application of the basic analysis of simple structures. It will assure them of the concepts of stress and strain, plane-stress transformation, shear force and bending moment, stresses in beams, and deflections of beams and trusses, and columns. At the end of the course, the students should be able

to solve numerous problems, including being able to draw the shear force and bending moment diagrams and understand the structural and materials behaviours. The students will also be able to develop the skills of easing any such problem from its physical description to a structural model as a representation to which the principles may be applied.

SEAA 2413 - Computer Programming

This course is designed to expose the students to the development of programming skills using a computer language to solve related engineering problems. It emphasises the general concept of computer programming that includes steps of problem-solving using computer, algorithm and program logic tools, interface design, modularisation, arrays, files, and graphics. Programming examples, lab exercises, assignments and group projects related to various civil engineering fields are given to the students. At the end of the course, the student should be able to plan, analyse, design and write computer programs for basic as well as complex civil engineering applications.

SEAA 2513 – Hydraulics

Pre-requisite: SEAA 1513 Fluid Mechanics

Hydraulics is one of the major disciplines of civil engineering. This course introduces the concepts of open channel fluid flow and their applications in hydraulics engineering problems. It covers various aspects of open channel hydraulics including types of open channel flow, design of channel section dimensions, uniform, and non-uniform steady flows. Dimensional analysis and the principle of hydraulic similitude in physical modelling are also included. At the end of the course, students should be able to apply the knowledge in solving civil engineering hydraulics problems.

SEAA 2712 - Engineering Geology and Rock Mechanics

This course is designed to enable students to evaluate, to apply and to analyse the relevant geological and rock mechanics principles in designing safe and economical rock engineering structures. In geology, the related topics on rock types/classifications, geological structures and geological processes are taught. Having acquired this knowledge, the principles of rock mechanics are then introduced mainly to highlight the relevance of engineering properties of geological materials in designing rock engineering projects. These principles include engineering properties of rock material, rock discontinuities and rock stabilization systems. At the end of the course, students should acquire the related knowledge and principles in geology and rock mechanics and should be able to apply these knowledge and principles in designing safe and economic engineering structures in rock masses.

SEAA 2722 - Geotechnics I

Pre-requisite: SEAA 1713 Soil Mechanics

This course is one of the core courses, which provides solid background knowledge on the properties and behavior of soils for geotechnical engineering practice. Understanding of the course will help the students in designing civil and geotechnical engineering structures. Topics for the course are stresses in soils, compressibility and consolidation of soils, and slope stability. At the end of the course, students should be able to analyze and apply the related theories of soil behavior, and to solve problems of stresses on retaining structures, consolidation settlement and slope stability.

SEAA 2832 - Highway Engineering

This is one of the compulsory courses which will expose students to the fundamental theory of highway engineering. Topics covered are highway materials and evaluations, premix plants, construction techniques and plants, mix designs, quality controls and testing, pavement structural thickness design, highway drainage, pavement visual assessment, maintenance, and rehabilitation.

SEAA 2912 - Water Treatment

This course is designed to expose the students to water treatment technology. Topics discussed include basic water quality requirement, water characteristics, water treatment process and supply, and design of unit water treatment systems. For design of water treatment system, it will cover the design of unit treatment operation. Other than treatment methods, the course also discuss on the water distribution.

SEAA 2922 - Wastewater Engineering

The course is designed to expose the students to wastewater treatment technology. The course will emphasize basic environmental microbiology, the characteristics of wastewater, wastewater analysis, the design of conventional wastewater treatment systems, and sludge treatment. Regarding the design of wastewater treatment systems, it will cover the design of clarifier, waste stabilization pond, conventional activated sludge, extended aeration systems, sequential batch reactor, aerated lagoons, and trickling filters. The course also covers the sewage quality standards under the Environmental Quality Act 1974. Furthermore, the course exposes students to select suitable wastewater treatment systems for specific applications. By the end of the course, students should be able to apply this knowledge to design a simple unit operation of wastewater treatment systems and to modify existing unit operation.

6.4.3 Third Year

SEAA 3012 - Civil Engineering Laboratory 2

Civil engineering is a practical field, and laboratory work is essential to be performed by students in this field. The laboratory work, which consists of workshops and experiments, is designed to expose students' essential problem solving and experimental techniques. Most of the generic attributes that the students must develop at the University are acquired through laboratory experiments and research. Laboratory sessions can strengthen the students to relate the fundamental theories with laboratory experiments in the field of concrete, transportation, hydraulics, and structural engineering. Each student will experience data collection and perform data analysis and result interpretations. Application of the experimental results to the real civil engineering problem will be highlighted. Upon completion of the course, students are expected to be able to perform laboratory experimental work related to civil engineering such as; concrete, transportation, hydraulics, environmental, geotechnical and structural engineering, to develop the techniques of conducting measurements, data analysis and interpret results in written report, and to develop generic attributes and enhance their ability to participate effectively in a laboratory environment and be able to work as part of a team.

SEAA 3022 – Integrated Design Project 1

Integrated Design Project 1 is tailored to encourage students to explore the inception and conceptual planning stage of a civil engineering development project. The subject focuses on basic civil engineering infrastructure design of a mixed development project given to students working in groups. Such exercise includes actual earthwork designs yielding practical proposed levels, evaluating and proposing practical erosion and sedimentation control measures as well as designing a practical external water reticulation network. An integral part of this exercise is the cost estimating process that students need to apply in arriving at the final proposed 'Grading Plan'. This helps the students to appreciate design-cost relationship.

SEAA 3045 – Industrial Training

Pre-requisite: Min 90 credits

Industrial Training is a core course which will assign students to work with industries for a period of 12 weeks. The training aims to expose students to real civil engineering practices such as project planning and design, construction management and site supervision and other fields of specialization. Students will gain knowledge and working experience as well as improving their interpersonal skills through working with professionals from the industries. Depending on the nature of work, the students will have opportunity to apply theories learnt in the lecture room into real civil engineering practices.

SEAA 3123 - Construction Technology, Estimating & Contract

This is a compulsory course. This course emphasizes the principles of construction in building and civil engineering works, which consists of construction industry and sustainable development, construction work process, site layout and facilities, building foundations, building elements and external works. It also covers other important aspects of construction plant and machineries, formwork and scaffolding. General concepts on Industrialized Building Systems (IBS) including precast, pre-stressed, and modular coordination in construction are also covered. The second half of this course emphasizes more on tendering, contract and estimating. These include introduction, strategy and process of tendering, introduction and types of construction contract, contracting process and contract administration. Besides, it covers introduction, process and method of estimating and taking-off based on Standard Method of Measurement (SMM). This course ends with introduction and related calculations for built-up rates. At the end of course, the students should be able to explain the principle of sustainability and role of engineers on sustainable development, discuss the application of construction, technology in building and civil engineering works, explain the types of tenders, procurement methods and Public Work Department (PWD) Standard Form of Contract and estimate the quantity and cost of building elements by using the Standard Method of Measurement. The students should be able to demonstrate capability of working in a team and some acquirement of contemporary knowledge.

SEAA 3243 - Theory of Structures

Pre-requisite: SEAA 2223 Mechanics of Materials

This course introduces students to the analysis of determinate and indeterminate structures in civil engineering. The course emphasizes the analysis of beams and frame structures subjected to various load conditions by using classical techniques. The course is limited to the linear elastic analysis of beam and frame structures except in plastic analysis where the critical loads at failure are being examined. Students will also be taught on the use of influence diagrams to solve problems involving determinate beams subjected to moving loads. At the end of the course, students should be able to apply the knowledge and use the classical techniques for solving problems in structural engineering.

SEAA 3313 - Reinforced Concrete Design I

Pre-requisite: SEAA 2223 Mechanics of Materials

This is a core course which will provide an understanding and ability to analyse, and design reinforced concrete structural elements. Among the topics discussed are reinforced concrete as a sustainable construction materials, objective and methods of design, code of practice, analysis, and design of sections for flexural and shear, checking for deflection and cracking, durability and detailing requirements, design of simply supported and continuous beams, design of one way and two ways restrained and simply supported slab. In addition, the students will be exposed to the concept of prestressed concrete which covers topics on principle and methods of prestressing, stress limit, losses, and selection of section.

SEAA 3323 - Structural Steel & Timber Structures

Pre-requisite: SEAA 2223 Mechanics of Materials

This course is one of the core courses. Upon completion of the course, students will be able to incorporate and utilize relevant standards and technology pertaining to the analysis and design of steel and timber structures. In this course, students will be exposed to the analysis and design of major structural elements constructed using steel and timber. For the design of steel structures, the main topics that will be covered in addition to the general concepts and advantages of steel construction are the analysis and design of restrained and unrestrained beams, columns (axially loaded columns, columns in simple construction and columns with moments), trusses, and connections (bolted and welded). As for the design of timber structures, the major topics that will be covered include the design of flexural and compression members.

SEAA 3412 - Building Information Modelling and Data Management

Pre-requisite: SEAA 1422 Engineering Drawing

This course is designed to introduce the concept and principles of Building Information Modelling (BIM), the utilization of BIM technology in the architecture, engineering, and construction (AEC) industry, and future trends of BIM developments. BIM is not only a technology that is dramatically changing the way AEC projects are delivered today, but also involves more integrated processes and parties (considering clients, designers and planners, owners, and other stakeholders) throughout the project life cycle. This course is also designed to expose the students to analysing, designing, and managing the huge of data. It concerns the management of information and how to model it in a structured manner so that the information can be manipulated and used effectively. The used of the database system as an application tool give the student a further step to apply an IT application in solving their problems. The aim of the course is to give students a practical knowledge to BIM and data management techniques for the documentation and modelling of designed structures. At the end of the course, students should be able to plan, analyse, and modelling the data to create a data model for database development and also able to create BIM model for civil engineering projects.

SEAA 3613 - Hydrology and Water Recourses

The course emphasizes hydrology and its application in the field of engineering, especially those related to water resources. Interdisciplinary aspects of hydrology that will be introduced and discussed are the understanding of the hydrological processes. These processes are precipitation, evaporation, transpiration, surface runoff, groundwater flow and infiltration. Some processes which play more dominant role will be discussed in more detail as compared to the others. An introduction to flood estimation will be highlighted together with the basic analysis and concept design in accordance to local guideline of Urban Storm Water Management Manual for Malaysia (MSMA). Frequency analysis will be discussed in this subject. Hydrologic modelling processes will be introduced as a basic requirement to the understanding to the empirical and numerical modelling concepts. Groundwater analysis and reservoir analysis that focuses on reservoir capacity estimation will be introduced. Upon completion of the course, students are expected to be able to describe and assess all the physical processes found in the hydrologic cycle together with the basic quantitative hydrologic analysis methods.

SEAA 3712 - Geotechnics 2

Pre-requisite: SEAA 1713 Soil Mechanics

This course will provide students with sound knowledge of onsite investigation and foundation designs for civil and geotechnical engineering structures. The main topics of the course are site investigations, shallow foundations, and pile foundations. The importance of site investigation for safe and economic foundation designs will be emphasized. Methods, procedures, and planning of effective site investigation will be addressed. The topic of shallow foundation will be based on Terzaghi's theory and Meyerhof's general bearing capacity equation, which will include the effects of ground water and eccentric load. Static formulae (Meyerhof's method, α and β methods) and dynamics formula will be introduced to determine single pile capacity in different soil conditions. Capacity and efficiency of pile groups in different soils will be addressed.

SEAA 3842 - Traffic Engineering

This is one of the compulsory courses which will expose students to the fundamental theory of traffic engineering. The main content of the course provides students with the fundamental theory of traffic flow and management. Major topics include drivers' behaviour and interactions, fundamental theory of speed-flow-density relationships and applications in road performance analysis, traffic studies, design of traffic signal control system, and highway geometric design.

SEAA 3913 - Environmental Management

The course is designed to expose the students to various aspects in environmental pollution and concepts of environmental management. The course will emphasize discussion in different aspects of environmental components including water, air, soil, and waste management. The importance of the use of different energy resources and their impacts towards the environments as well as issues related to carbon storage will also be covered in this course. Various pollution control and prevention methods, environmental regulations as well as the implementation and concept in the environmental impact assessment (EIA) in achieving sustainable development will also be among the important aspects of this course. Upon completion, students should be able to demonstrate and apply the knowledge by the ability to identify specific pollution control technology and methods and the processes in preparing an environmental impact assessment (EIA) report. The students should be able to synthesize the knowledge in a group project and demonstrate a cooperative effort while working in a team as well as develop good relationship and interaction with colleagues and work effectively with other people to achieve mutual objective.

6.4.4 Fourth Year

SEAA 4021 - Civil Engineering Seminar

This course is designed as a compulsory attending course, which is carried out based on a seminar format. Speakers from universities and from within the practicing civil engineering-based organizations are invited to deliver a topic on specialized topics and issues in various civil engineering field, including ethics and professional in civil engineering practice. At the end of the course, students should be able to understand the actual civil engineer practices in civil engineering-based activities and adhere to professional ethics.

SEAA 4022 - Research Methodology and Pre-Project

This course is a compulsory course for all students before they undergo the Final Year Project. In this course, the student will be exposed to various aspects of research including types of research, method of literature review, research design, results, and analysis, writing of thesis and journal and also presentation skills. The students will also be exposed to the problem-solving methodology, decision-making and data collection process. This helps to prepare the students for the Final Year Project. The student must prepare a Pre-Project proposal report in the topic that will be given by their supervisors. At the end of this course, students should be able to understand all aspects of research, conduct research in a systematic way, solve and analyze data and results and write and present pre-project proposal reports.

SEAA 4032 - Integrated Design Project 2

Pre-requisite: SEAA 3022 Integrated Design Project 1

Integrated Design Project 2 (IDP 2) is tailored to process the Detailed Design Stage of a development project that has previously undergone the Planning – Design – Costing Stage (IDP 1). The subject focuses on the implementation and integration of infrastructure design, building design and geotechnical design to produce a comprehensive final technical report documenting all engineering proposals and drawings, charts, diagrams etc. Apart from the basic infrastructure of road and drainage and sewerage design students are also required to integrate their knowledge of other civil engineering disciplines such as (but not limited too) structural analysis and reinforced concrete design and geotechnical (foundation) analysis and design into their overall project work. The content on this subject is designed to exposed students to real life complex engineering problems that require knowledge integration at all levels of execution. At the end of this course, the students will be able to comprehend the needs and requirements of local/government authorities regarding submission procedures and are able to appreciate the importance of integration and synthesis of various discipline of civil engineering knowledge.

SEAA 4034 - Final Year Project

Pre-requisite: SEAA 4022 Research Methodology and Pre-Project

This course is compulsory for all students before they can get their Bachelor Degree. In this course, the student is expected to be able to conduct research activity independently with supervision from their supervisor. The students are also required to write a good thesis report and be able to present their project findings effectively. At the end of the course, students should be able to conduct research in a systematic way, collect data relating to the project, solve and analyse data to obtain results, write a good project report and present project findings.

SEAA 4113 - Construction and Project Management

This course aims to develop an understanding of the importance of construction management principles and its related tools. The course starts with an overview of the construction industry's importance. Major issues, problems, challenges, and processes in managing a construction project will be explored. The construction project life cycle phases and costing together with phases of project management will be discussed. The roles and responsibilities of stakeholders involved at each stage will be explained. Organisational functions in management and types of organizational structures will be exposed. The usage of tools available in construction management particularly in the application of planning and scheduling techniques using the Gantt chart and networking technique. Students will be able to develop and solve a construction project schedule manually and digitally using the critical path method concept. The course will also expose the students to the application of popular scheduling software. The application of scheduling techniques related to resource allocation, project crashing and project cash

flow requirements will be exposed. The best practices on how to monitor and control project effectively will be explained. The last important topic involves learning experiences in managing projects using available scheduling software such as Microsoft Project.

SEAA 4223 - Structural Analysis

Pre-requisite: SEAA 3243 Theory of Structures

This course is designed to expose the students to analysing two-dimensional structures using a matrix operational method and computer applications. The matrix operational method is also suitable to be programmed in computers as the solutions adopt the matrix concept. The course consists of the flexibility method, the stiffness method, concept for solving matrices, an introduction to finite element method and structural modelling using existing software. The structures include beams, trusses, and frames. At the end of the course, students should be able to analyse the structures by using the numerical methods and/or the existing computer software. The students should also have problem-solving skill on problems of interest in Civil Engineering structures.

SEAA 4333 - Reinforced Concrete Design 2

Pre-requisite: SEAA 3313 Reinforced Concrete Design 1

This course is a core course in which students will be exposed to a wider scope of reinforced concrete design. As a continuation to the Reinforced Concrete Design 1, the topics to be covered are design of staircase, design of column, design of footing and pile cap and design of retaining walls. In addition, the students will be exposed to the method of analysis of reinforced concrete frames.

6.5 Synopsis of Faculty's Elective Courses

SEAA 4013 – Advanced Engineering Surveying

Pre-requisite: SEAA 1023 Engineering Surveying

This course provides the theory and practice of advanced surveying to civil engineering students. Methods of surveying measurement using modern and advanced technology civil engineering designs and projects are discussed. The applications of precise levelling, 3D terrestrial laser scanning (TLS), global satellite navigation system (GNSS), photogrammetry, and hydrographic surveying in typical civil engineering projects are highlighted. Deformation surveys, which are often required in dilapidation surveys are also discussed. The theory of error propagations and their adjustments are also discussed. Relevant fieldwork is conducted to enhance students' grasp of the theory. At the end of the course, students are expected to apply advanced measurement techniques in solving positioning and dimensioning problems in civil engineering.

SEAA 4143 - Construction Plants and Equipment

This course introduces the techniques of applying engineering fundamentals and analyses to the planning, selection and utilization of construction equipment. In general, the right selection, efficient utilization and cost-effectiveness of major construction operations have significant impacts on the overall cost and duration of construction activities. This course uses concepts from various engineering disciplines such as Engineering Economics, Geotechnical, Mechanical, Structural and Environmental Engineering, among others. At the end of this course, the students should be able to apply engineering fundamentals and analyses to the planning, selection and utilization of construction equipment. This includes a thorough understanding on the total construction process and how construction equipment should be selected and used to produce the intended quality in the most cost-effective manner.

SEAA 4163 – Offshore Structures

This course emphasizes on the overview of offshore structural engineering related to oil and gas industry by covering vast amount of fundamental topics such as Front-end engineering design (FEED), Environmental loads, Response of Structures to environmental loading, Analysis and Design of Offshore Steel platforms, Analysis and Design of Offshore Topside Modules, Construction of Steel Platforms, Load-out, installation, hook-up and commissioning of offshore structures, Inspection, repair and Maintenance, Structural assessment of existing structures as well as removal of disused structures.

SEAA 4163 - Concrete Technology

This course is designed to introduce students and enhance their knowledge on concrete technology. It will emphasize on the rheology of fresh concrete, the various design methods of concrete mixes, the different types and properties of cement replacement materials, special concretes which include fibre reinforced concrete, high strength concrete, lightweight concrete, flowable concrete, self-consolidating concrete, and polymer concrete. Other topics that will be covered include concrete deformations, durability of concrete, and repair of concrete structures due to various causes of deterioration. At the end of the course students should be able to identify, discuss and apply the materials and technology available in producing good concrete that is suitable for different applications.

SEAA 4243 - Finite Element Method

This course is developed to expose students to the fundamental theory and application of the finite element method. The course covers linear analyses for displacements and stresses in continuum structures. Formulation of stiffness matrices for one-dimensional elements, beams, plane stress and plane strain are presented in detail. Application towards more complex engineering problems including truss and frame systems is discussed. Isoparametric formulation is emphasized. Use of mathematical / finite element software for modelling and analysis is also emphasized. At the end of the course, students should be able to formulate finite element problems and to solve them by hand calculation for simple engineering problems and should also be able to develop finite element model, investigate and interpret results accordingly for more complicated problems. Students should also be able to analyse and discuss practical problems through project to demonstrate their understanding about the course materials.

SEAA 4263 - Earthquake and Wind Engineering

This is an elective subject. In the beginning of this course, an introduction to earthquake engineering and structural dynamic is provided. Then, structural dynamic with the focus on the single-degree and multi-degree of freedom structures is presented. Next, seismic design regulations and requirements based on current design codes are addressed. After that, wind load effects on buildings are explained and the calculation of wind force based on current design codes is presented. At the end of the course student should be able to calculate the effect of dynamic loads on the structures and design buildings against wind and seismic actions.

SEAA 4323 - Prestressed Concrete Design

This course introduces students to the principles and practises of prestressed concrete design. The content encompasses a thorough understanding of the principles and concepts of prestressing, methodologies for prestressing, stress limits, prestress losses, section selection, serviceability criteria, and strength requirements. Furthermore, students will gain familiarity with the intricate analysis and design procedures for prestressed concrete beams, along with the design principles governing continuous beams. At the end of the course, students should be equipped to critically evaluate construction processes for prestressed concrete and understand the importance of quality control measures. This includes the ability to analyse and compare different methods of prestressing, assess

the impact of construction techniques on prestress losses, and identify potential challenges in the construction of prestressed structures. Case studies and real-world examples will be used to reinforce this practical understanding.

SEAA 4373 – Bridge Engineering

This is an elective course intended to give the basic knowledge in bridge engineering. The course covers topics on basic bridge conception, structural system, bridge loading, deck analysis, selection and design of bridge substructure and superstructure, bridge management and maintenance and rehabilitation. The main part of the course focuses on the modelling, analysis and design of various types of concrete bridges. Application of design loads and load combinations based on EN 1991-2 and BD37/01 are delivered in the grillage analysis using finite element software.

SEAA 4383 - Analysis and Design of Tall Building Systems

This course deals with modelling, analysis and design of tall building structural system. The course content covers an introduction to tall building structures and related issue in analysis and design. The student will be guided through the Eurocode 1, 2, 3, 4, 7 and 8 basic requirements of analysis and design of tall buildings. The modelling, analysis and design of tall building structural elements such as frame, shear wall and core wall structures will first be explained before the students are guided through the analysis and design of various tall building shapes using software. Finally, the detailing of shear and core walls will be explained in detail.

SEAA 4513 – Hydraulics Structure

This course is designed to provide an in-depth understanding of hydraulics structures and their applications in various systems. The course will cover topics such as elements of dam engineering, embankment dam engineering, dam outlet works, sedimentation in reservoirs, gates and valves, diversion works, and energy dissipation. This course covers the common terminology of hydraulics structures and their components.

SEAA 4523 – Coastal Engineering

The course covers theoretical and fundamental principles of coastal hydrodynamics and processes. It gives background knowledge of the various hydrodynamic parameters acting in the coastal region due to waves, tides and currents. Underlying principles of coastal engineering works, coastal erosion management and implications from implementing coastal structures in the coastal environment are delivered. Emphasis in solving and tackling coastal engineering problems adopts the use of established analytical techniques. At the end of the course, students should be able to describe and analyse the various coastal processes and the effect of these forces on the coastal zone. The students should be able to quantify coastal environmental parameters. They should also be capable of proposing methods to manage and control the coastal processes when applied to solve coastal engineering problems.

SEAA 4613 – Water Resources Management

This course covers an Integrated Water Resources (IWR) perspective including social, economic, environmental and reservoir management and design related knowledge and expertise will be developed in relevant topics which include: water resources issues, water resource development, water law, policy and institutions, water resource planning, reservoir yield and operation, river basin management, water resources system analysis, risk and reliability analysis.

SEAA 4623 – Urban Storm water Management

The subject mainly covers the theoretical aspects and design of urban storm water drainage system. This includes drainage planning process, non-structural planning, and control option for flow reduction and pollution minimization. Importance and impacts of best management practices of urban storm water management are also covered throughout the topics. At the end of the course, the students are being exposed to design elements in urban drainage and flood control systems that comply with Malaysian design criteria. The students will also realize the importance of urban storm water management and be exposed to real projects examples and climate change impact elements.

SEAA 4723 --Engineering Rock Mechanics

Construction in Civil Engineering is associated with two types of geological materials, namely soils and rocks. This course deals with rocks, particularly on how these geological materials react to both geological and construction induced stresses. Construction of structures in or on rock mass (e.g. foundation, slope, tunnel & cavern) depends greatly on the rock mass properties and the interaction between the rock mass and the engineered structures. The term 'rock mechanics' refers to the basic science of mechanics applied to rocks, while the term 'rock engineering' refers to any engineering activities involving rocks. Basic knowledge in geology (particularly rock types, discontinuities in rock and structural geology) is essential for this course.

The content is tailored to enable students to acquire knowledge on the principles of rock mechanics, and subsequently able to understand the importance of these principles in designing and construction of rock engineering structures. Week 1 - Week 6 the students are introduced to the relevant principles that include rock properties and rock mass classification. In these weeks the students learn the importance of the rock strengths and properties, and the effect of geological discontinuities on in situ rocks. Week 7 to Week 13 the application of rock mechanics principles in designing common rock engineering structures (foundation, slope and tunnel) are introduced. This enables the students to appreciate the importance of rock mechanics in designing rock engineering structures and reaction of mass to both geological and construction induced stresses. Week 14 to Week 15 cover topic on methods of stabilisation for unstable rock masses. Focus is on 2 fundamental aspects; mechanisms of stabilisation of each method and various modes of instability in rock mass. The correlation of both aspects allows student to appreciate the approach used in selecting suitable and effective method for rock stabilization. At the end of the course, students should acquire the knowledge on principles rock mechanics, and should be able to appreciate and to apply them in designing common rock engineering structures.

SEAA 4733 – Foundation Engineering

This subject is one of the core subjects offered by the Department of Geotechnics and Transportation, which will highlight the application of soil mechanics to foundation design in practice. Lectures will be emphasised on foundation design in Civil Engineering projects. Foundation design must be based on parameters evaluated from the Site Investigation programme and make use of the soil parameters, which requires the knowledge of geology and soil mechanics principles. Various types of foundation and their criteria for selection will be presented, which is interpreted from site investigation related to the shallow foundation, pile, raft foundation, drilled shaft, cofferdam and underpinning. Group piles, laterally loaded, and uplift piles will be covered in the course. Settlement and bearing capacity considerations will be employed to select and design the appropriate foundation scheme for structures. At the end of the course, the student will be able to understand and apply the principles of foundation design in terms of technical feasibility, economic viability, articulate and justify technical analyses

through oral, written and graphical means. The student will also be able to appreciate the constantly evolving nature of civil engineering design and practice.

SEAA 4753 --Geological Engineering and Environment

Geological Engineering and Environment course provides students with a comprehensive understanding of the principles, concepts, and practical applications of geology in civil engineering and environmental contexts. This course equips students with the knowledge and skills necessary to assess geological factors, mitigate environmental risks, and make informed decisions in the fields of civil engineering, environmental science, and resource management. By the end of this course, students will have a strong foundation in geological engineering and environmental principles, enabling them to contribute effectively to the sustainable development of infrastructure and the responsible management of natural resources. Geological Engineering and Environment is an attractive discipline for students who wish to pursue the challenge of combining the complexity of nature and engineering design, who are interested in the physical mechanics of the earth's surface and subsurface.

SEAA 4813 –Pavement Design and Construction

This is one of the elective subjects that will develop the knowledge and experience of the students in pavement design construction. This course comprises the following topics: Factors influencing thickness design, methods of pavement design: AASHTO, Asphalt Institute, ATJ5/85 (2013), Rigid pavement design, Interlocking block design, surface dressing design, construction of various pavement types, earthworks, cut slopes, embankments, surface drainage, subsurface drainage, erosion control, slope protection, culverts.

SEAA 4823 –Transportation Planning

This elective course discusses the transportation planning process. It covers a range of topics namely transportation models which include four-step travel demand forecasting models. The various techniques of forecasting travel patterns and mode choice will be elaborated. The applications of regression and categorical analysis for trip generation and attraction will also be explained.

SEAA 4853 – Railway Engineering

This is one of elective courses which focuses on the fundamental concepts of railway engineering. It is very important for engineering students and new entrants into the field of railways to be aware of not only the fundamentals of railway engineering but also latest developments with regard to railway tracks. Major topics include railway track gauge, engineering surveys and construction of new lines, geometric design of track, track drainage, level crossing, railway stations and high speed trains.

SEAA 4923 –Advanced Water and Wastewater Treatment

This course is an extension of the water and wastewater treatment course (SEAB 2912 & SEAB 2922). It covers two different aspects of treatment namely, advanced treatment processes and effluent reuse. In advanced treatment processes, students are exposed to different physico-chemical unit processes i.e. air stripping and aeration, chemical precipitation, ion exchange, chemical oxidation, adsorption and membrane filtration. It also covers the advance topic in aerobic biological treatment process, anaerobic treatment process, and nutrients removal. Effluent reuse and the applications of the advanced processes are also discussed. The emphasis is on theoretical background, conceptual design, and applications of the treatment processes.

SEAA 4943 –Municipal Solid Waste Management

This is an elective course, offered to final year undergraduate students. It provides the students with an overview of particularly municipal solid waste. The program includes discussion on the practices of municipal waste management, sources of wastes, generation rate and characteristics (physical and chemical properties), analysis of collection systems, handling of waste and disposal practices of municipal waste. Processing and recycling of wastes are also discussed. At the end of the course, students should be able to apply the theory and knowledge of managing municipal solid waste. The students should also be able to work in a team and be able to present works through a written report as well as an oral presentation.

SEAA 4973 –Industrial and Hazardous Waste Management

This course introduces students to issues of industrial and hazardous wastes management. The course includes the introduction of the scheduled wasted type as well as discussion on the concept of hazardous waste, sources, quantities and characteristics (physical and chemical properties). The key elements in waste management such as storage, collection, transport, treatment and disposal of hazardous wastes are also addressed. Waste minimisation, one of the main strategies is also introduced. At the end of the course, students should be able to apply the knowledge by associating environmental problems that arise with poor management, treatment and disposal of industrial waste.

SEAA 4983 –Water Quality Management

This course is designed to expose students to current trends and various aspects in water quality assessment and management for river catchments, lakes, reservoirs and wetlands. It tackles problems involving water pollution and its impacts on the environment and legislation. Water quality monitoring projects carried out by students will enable application of proper sampling and monitoring methods. At the end of the course students will then be able to assess water quality problems and plan mitigation and control measures for water pollution.

6.6 Synopsis of Faculty's PRISMS Elective Courses

SEAA 5113 - Construction Laws and Contract

This course introduces students to Malaysia laws, which will focus on the sources, and branches of law in Malaysia. The course will emphasize on private laws related to construction practice, law of contract and construction contract administration. Construction contracts and the laws underpinning them will be subjected to detailed consideration and analysis, in tandem with a comparative analysis of the approach adopted by a wide range of standard form contracts. Other topics covered include avoidance, management and resolution of construction claims and disputes. Students will be exposed to various court cases related to construction contract administration. Students will also apply the knowledge of the Malaysian legal framework and legal requirements in contract administration to resolve legal issues in construction projects. More importantly, the students will be able to use their knowledge to promote an ethical and better image of the construction industry.

SEAA 5123 - Construction Site Management and Safety Control

The course is designed to educate the student on the construction site management and occupational health and safety (OHS) concept. The course is divided into two parts namely site management and safety control. The first part will emphasize on site management particularly principles of site management, site performance, site reporting, monitoring and control, site layout, workers' welfare and site resources management. The second part will focus on the OHS legislation, accident causation theories, prevention and investigation, risk management, OHS Management, performance and culture,

the occupational health such as stress and ergonomics in construction projects. Upon completion, students should be able to apply effective site management and practice the knowledge of Occupational Health & Safety Management and Accident Prevention in managing construction projects.

SEAA 5133 - Sustainability & Environment Management in Construction

The developments of building and infrastructure have inherent links with the environment. Land, materials, water, energy are all consumed during the construction operation of buildings and infrastructure. The constructed facilities then become part of the new environment we must live with. The process along the product development and the facilities lifespan generates greenhouse emissions which cause damage (e.g., global warming) to our environment. This subject offers an inter-disciplinary topic designed to promote collaboration and enhance understanding of the global challenge of sustainable development that related to construction industry. The course will emphasize on sustainability and environmental management within construction related issues to meet the principles Sustainable Development Goals (SDG 2030) and other niche guidelines related to construction industry. The subject will cover aspects of embodied energy (renewable & non-renewable), energy efficiency in building, construction waste, construction noise and management prevention method for construction. Thus, environmental regulations & legislation; Green Assessment Tools, environmental Impact Assessment (EIA) and Environmental Management System (EMS) will be incorporated into the subject. At the end of the course, students are expected to able to understand the principles of sustainable development and apply knowledge to plan, design and construct using sustainable concepts and methods.

SEAA 5143 - Fundamental of Project Management

This course aims to provide a thorough understanding on the fundamental knowledge of project management theory and principles. It begins with the reviewing of the evolution of the management theory and the influence of the various schools of thought in management. The issues and challenges faced by the contemporary managers will be discussed within the current business environment context. Then the focus will be shifted to the project management environment. This course is conducted within the context of nine areas of knowledge as stipulated in PMBOK. The course will relate how the underlying principles of management theory are being applied to the project management perspective at the various phases of its life cycle. Major constraints of time cost quality in project management environment will be elaborated. The elements of project management critical to the success of a project also are identified and explained. The specific focus will also be given on applying the contemporary management in managing current project. The principles and tools are integrated and clarified through case studies from a variety of project organizational settings and through creation of project management plans developed by students working in teams. Discussions will also emphasize on the importance of the global and environmental impacts on the project.

SEAA 5153 - Project Planning & Scheduling

This course provides knowledge on contemporary practice in project planning and scheduling process in managing a construction project. Major software for project planning and scheduling will be used. The student will be taught to develop a project schedule and WBS then use the advanced technique to monitor and track project performance against the baseline schedule. The concept and application of the Earn Value Management system will be taught, and the student will be able to appraise project performance from time to time and recognize major delays and budget control.

SEAA 5163 – Project Financial Management

This course discusses the basic concepts of accounting and financial management, methods of financial statement analysis, evaluation of financial assets in terms of risk and return, and short-term and long-term capital management of an organisation. This course is designed to equip students with the knowledge and skills necessary to develop effective business plans and manage finances strategically and will provide a solid foundation in both business planning and financial management principles, enabling students to make informed decisions that contribute to the success and sustainability of businesses.

SEAA 5213 - Advanced Structural Analysis and Modelling

The aim of this course is to provide future structural engineers with the tools to deal with the structural analysis of realistic civil engineering structures. The content of the course covers linear elastic analysis of structures using matrix method and its application using analysis software. It begins with a review of the basic concepts of structural analysis using matrix method focussing on the formulation and solution of equilibrium equation for skeletal structures which covering plane and space frame and grids. Then the formulation for continuum structural elements using Finite Element approach is presented. Understanding the behaviour of elements used in the structural analysis is emphasized, which includes plane stress, plane strain, axisymmetric, plate bending and shell elements. Students are expected to be able to apply these elements in combination with skeletal element in the modelling and analysis of a complete 3D structural system using structural analysis software. Modelling of various types of details as found in the real structures which affect the analysis results is also discussed. Individual projects on modelling and analysis using software is given at the end of the semester followed by the presentation about the project. Analysis software such as ROBOT or STAAD is used throughout the course.

SEAA 5233 – Structural Dynamics

The topic in structural dynamics course covers introduction, natural frequency, single degree of freedom, multi-degree of freedom system, eigenvalues and eigenvectors, free vibration response, response to excitation as well as time and frequency domain. Students will also be introduced to various structural dynamic tests and further exposed to hands-on experiments for the free vibration and ground motion conditions and computer analysis to solve dynamics problems. At the end of the course, the students should be able to solve numerous problems which involve dynamic loads.

SEAA 5323 - Advanced Design of Steel Composite Structures

This course intends to give an extensive understanding to the students in the advanced design of steel structures which are the multi-story steel frames, composite beams, plate girder, and portal frame. Eurocodes (EN 1993 and EN 1994) will be employed as the standards for design. The design of multi-story steel frames covers mainly the design aspects of braced and unbraced frames. In the design of unbraced frames, a special method called a Wind-Moment method is introduced. For braced frames, three aspects of design namely simple, semi-continuous, and continuous construction are discussed and compared to give a better picture on the economic aspects of the design. Details of the design of the frames include the analysis and design of the frames for columns, beams, connections, bracing system, column and beam splices. The course also covers the design of composite beams by using linear and stress block interaction methods which include the interaction of shear stud as full strength and partial strength. The design of plate girder is also included to cater for heavy load transferred to a long span or "column-free" construction of multi-story steel frames and bridges. Lastly, the design of portal frame is covered with the focus on a single-span symmetrical frame. Analysis and design software maybe employed in the course.

SEAA 5313 - Advanced Design of Reinforced Concrete

This course is intended to provide advanced knowledge on the aspect of design of reinforced concrete structural members. As a continuation to the Reinforced Concrete Design 1 and 2, the topics discussed are analysis and design of ribbed, waffle and flat slabs, water retaining structures, shear walls, corbel and nibs. Furthermore, students will be exposed to the methods of deflection calculation, design of elements for torsion and design of raft foundations. The design methodology will follow Eurocode 2 and any appropriate relevant design code.

SEAA 5513 - Advanced Hydraulics

This course introduced advanced concepts of fluid mechanics in relation to unsteady flow in pipes and open channels, fluid kinematics, and fluid dynamics including conservation of mass and momentum, the Bernoulli equation, the Navier-Stokes equation and the boundary layer theory. It covers laminar flows, transition to turbulent and fully turbulent flows and will be taught with civil engineering applications in mind. The students should already have a fundamental understand of fluid properties and mechanics, open channel and pipe flow. Basic knowledge in dealing with differentials and integrals is an advantage. In this course, computational methods of solving unsteady flow in open channels and pipes, which are topics of specific interest to civil engineers, will also be covered. The second half of the course deals with flow kinematic and flow dynamics. The student is introduced to the concepts of Lagrangian and Eulerian approaches, the Reynolds Transport Theorem, visualisation of flow properties in a dynamic system, the concepts of system and control volume in flow analysis and the Navier-Stokes equation with emphasis on the boundary layer flow.

SEAA 5613 - Advanced Hydrology

The subject mainly covers the theoretical aspects and design of urban storm water drainage system. This includes drainage planning process, non-structural planning, and control option for flow reduction and pollution minimization. Importance and impacts of best management practices of urban storm water management are also covered throughout the topics. At the end of the course, the students are being exposed to design elements in urban drainage and flood control systems that comply with Malaysian design criteria. The students will also realize the importance of urban storm water management and be exposed to real projects examples and climate change impact elements.

SEAA 5623 - Urban Stormwater

The subject mainly covers the theoretical aspects and design of urban storm water drainage system. This includes drainage planning process, non-structural planning, and control option for flow reduction and pollution minimization. Importance and impacts of best management practices of urban storm water management are also covered throughout the topics. At the end of the course, the students are being exposed to design elements in urban drainage and flood control systems that comply with Malaysian design criteria. The students will also realize the importance of urban storm water management and be exposed to real projects examples and climate change impact elements.

SEAA 5713 - Advanced Soil Mechanics

This subject is one of the electives (PRISMS) subjects offered by Department of Geotechnics and Transportation, which will provide: the advanced knowledge on the application and principles of soil mechanics and introduction of unsaturated soil mechanics. It considers the following topics: soil and clay mineralogy, strength behaviour of cohesionless and cohesive soils, Mohr-Coulomb failure criterion, peak stresses, effective stress ratio, residual stress and critical state soil mechanics. It also will covers principles of advanced laboratory measurement and extensive consolidation theory and pore pressure parameters. In addition, introduction of unsaturated Critical state soil mechanics for both strength and compressibility characteristics.

SEAA 5723 - Geotechnical Analysis & Design

This course, offered by the Department of Geotechnics and Transportation, will provide advanced knowledge on the analysis and design of geotechnical engineering structures such as the earth dam, earth retaining structures, embankment on soft soils and tunnelling through soils. It includes evaluating poor ground conditions and propose alternative technique(s) for ground improvement such as the sand drain, vertical drains, geosynthetics, soil reinforcement, electro-osmosis and others. Practical solution to problems which often confronted during construction in difficult ground area will also be highlighted. The course explores examples of the construction and post-construction data for the purposes of performance, safety and design compatibility. Slope and embankment stability; natural and manmade slopes, earth dams and embankments on soft clay, will be lay out in this course. Earth retaining structures for deep excavation, brace cut, gravity cantilever, buttress and reinforced earth wall and cantilever and anchored sheet pile will also be included. Besides that, the analysis and design of tunnelling work through soil and the earth dam on various foundation soil types will be demonstrated. The geotechnical instrumentation for monitoring of the geotechnical engineering structures will be explored in each chapter separately.

SEAA 5733 - Slope Engineering

This course provides a comprehensive introduction to the subject of slope stability, from initial classification through assessment and analysis to remediation. It provides the student with the knowledge, strategy and capability to inspect, understand and assess slope instability. The course covers both the theory and practice of slope engineering.

This course is ideal for those involved in the design, analysis or construction of civil engineering projects where the existence, creation or alteration of slope features may occur.

This course considers the background to slope movements, simple classification systems and the fundamental soil mechanics that control stability. The key parameters are highlighted and discussed. The principles and assumptions of the more popular methods of analysis are introduced together with a pragmatic guide for assessing the competence of analysis software. Specific problems covered include natural and cut slopes, earthworks and fills.

It also focuses on the practical approach to slope stability assessment and remediation. The investigation of failed slopes is considered. Remedial options to arrest or prevent movement are detailed together with a section on modelling. Techniques for the back analysis of slopes are covered and the application of stability calculations for suction assessment is explored.

SEAA 5813 - Highway and Infrastructure Design

This course provides state of art knowledge on highway and infrastructure design. Understanding of the subject will help the students to design highways and related infrastructure facilities. Topics for the subject are intersection design including roundabout design, intersection control system, highway surveys and location, geometric design of roads and highway facilities and also road cross section design. At the end of the course, students are able to analyse and apply the related theories in order to design highway and infrastructure facilities.

SEAA 5823 - Advanced Road Material

This is one of the elective subjects that will enhance the knowledge of the students on advanced road materials. The course consists of the following topics i.e., asphalt mixture (HMA, WMA, CMA), premix plant (types and operation), modified asphalt, rubberised asphalt, nanotechnology and its impact on

road construction, durability of asphalt premix, asphalt mixture specification and testing, emulsified, cutback and foamed asphalt, road maintenance, and quality control and acceptance of asphalt mixtures.

SEAA 5833 - Traffic Management & Analysis

This course discusses urban traffic and transportation management strategies. It addresses the basic traffic and transportation data collections, analysis and the fundamental theory of traffic flow, capacity assessment of transportation facilities and the transportation systems management (TSM) planning processes and strategies. TSM includes Advanced Traffic Management (ATM), Urban Traffic Control System (UTCS), Intelligent Transport and Traffic System (ITS) and Highway Information System.

SEAA 5913 - Environmental Management & Sustainability

This course is designed to expose students to various aspects in environmental management and the concept of sustainability. Topics discussed include the principles of sustainable development, understanding the environmental sensitive areas particularly the natural water bodies, catchment management, development of coastal and inland areas. Current issues related to environmental problems especially on climate change and water supply are the main aspects to be addressed. Some methods and concepts of sustainable approaches are introduced in order to promote and achieve sustainable development goals. At the end of the course, the students should be able to understand the concept of environmental sustainability and present it through an effective communication. The course enables the students to understand, plan and incorporate the concept of sustainability in environmental management.

SEAA 5923 - Land use and Environmental Planning

This course covers the fundamental concepts and mechanisms underlying land use and environmental planning from conceptual to its implementation. It focuses on the understanding of ecosystems, the impacts of land development activities along with the appropriate tools/techniques of environmental planning and management used to mitigate them. It provides an overview of the field, along with the fundamentals of land use planning, and presents a collaborative approach to environmental planning while explaining the principles of ecosystem management, restoration, and protection; land conservation; and the mitigation of natural hazards.

SEAA 5933 - Air and Noise Pollution

This course is designed to expose students with a comprehensive understanding in elements involved in air and noise pollution, and the practical approaches to control the pollution. In the air pollution part, topics discussed include elements and phenomena of air pollution, meteorology, control of air pollution and design considerations. In a noise pollution part, topics discussed include elements of noise pollution, effects, types of noise pollution, road traffic & aircraft/industrial noise. At the end of the course, students should acquire the fundamental knowledge related to the principles and control strategies of air and noise pollutions.

SEAA 5173 - Laws in Forensic Engineering

This course introduces students to laws related to professional engineering practices. The course will emphasize two main liabilities: tort and statutory liabilities. The role of professional as expert witness will be introduced in the law of evidence so as the students will be familiar with the role of expert witness and the procedures involved during experts at trial. The focus will be on building a credible and believable testimony. At the end of the course, the students are expected to understand the legal setting in the practice and be able to analyze and apply critical reasoning and make informed judgement in addressing legal issues in engineering practice and to stand as credible expert witness.

SEAA 5223 - Risk Assessment

This course aims to give students a comprehensive exposure to structural safety, risk assessment and reliability engineering concept related to civil engineering system. The course contents consist of four different modules named Systems Reliability, Safety & Risk, Data Analysis & Simulation and Risk Assessment & Safety Management. Safety & Risk leads to an understanding of the principles of structural reliability theory and its application to risk and reliability engineering. Data Analysis & Simulation is designed to develop knowledge of statistical data analysis and its application in engineering and science and introduces the concepts of using simulation techniques for analysis of complex systems. It also teaches linear optimization techniques and the ability to apply them to solve simple problems. In Systems Reliability, this section gives an understanding of the qualitative and quantitative techniques that are used in the reliability, availability, and maintainability analysis of all types of engineering systems. The final part of this course, Risk Assessment & Safety Management gives student an appreciation of risk from individual and societal perspectives as well as understanding the basic principles of risk assessment and modelling and how safety management works in practice.

7 UNIVERSITY'S GENERAL COURSES

7.1 Introduction

Undergraduate students in the Bachelors Degree Program are required to register for the University's General Courses during their duration of study. The University's General Courses are categorized as follows:

Cluster 1: Malaysia Core Value

Cluster 2: Value and Identity

Cluster 3: Global Citizen

Cluster 4: Communication Skill

Cluster 5: Enterprising Skills

These courses, introduced in Semester 1 Session 2022/2023 Academic Session, are compulsory to all Bachelor's Degree students of UTM. Students will have to complete these courses as one of the requirements for graduation.

7.2 Cluster 1: Malaysia Core Value

Students are required to take a total of four (4) credits of courses as listed in the following table.

List of Courses and The Codes

Code	Name of Course	Credit
FOR INTERNATIONAL STUDENTS		
ULRS 1022	Philosophy and Current Issues	2
OR ULRS 1182	Appreciation of Ethics and Civilization	2
AND UHLM 1012	Malay Language Communication 2	2
FOR LOCAL STUDENTS		
ULRS 1022	Philosophy and Current Issues	2
ULRS 1182	Appreciation of Ethics and Civilization	2
Total no. of compulsory university credit course for international or local students		4

7.3 Cluster 2: Value & Identity

Students are required to take a total of two (2) credits of courses as listed in the following table.

List of Courses and The Codes

Code	Name of Course	Credit
ULRS 1032	Integrity and Anti-corruption	2
Total no. of compulsory university credit course		2

7.4 Cluster 3: Global Citizen

Students are required to take a total of two (2) credits of courses as listed in the following table.

List of Courses and The Codes

Code	Name of Course	Credit
ULRF****	Credit Co-curricular Courses	2
Total no. of compulsory university credit course		2

7.5 Cluster 4: Communication Skill

Students are required to take six (4) credits of English Language courses and another two (2) credits of Foreign Language as listed in the following table. The total compulsory credit for language skill is six (6) credits.

List of Courses and The Codes

Code	Name of Course	Credit
UHLB2122	Professional Communication Skills 2	2
UHLB3132	Professional Communication Skills 3	2
UHLX1112	Elective of Foreign Language	2
Total no. of compulsory university credit course		6

7.6 Cluster 5: Enterprising Skill

Students are required to take a total of two (2) credits of courses as listed in the following table.

List of Courses and The Codes

Code	Name of Course	Credit
ULRS3032	Innovation and Entrepreneurship	2
Total no. of compulsory university credit course		2

7.7 Summary of Total Credit Hours for University's General Courses

Cluster	Name of Cluster	Credit
Cluster 1	Malaysia Core Value	4
Cluster 2	Value and Identity	2
Cluster 3	Global Citizen	2
Cluster 4	Communication Skill	6
Cluster 5	Enterprising Skill	2
Total no. of compulsory university credit course		16

7.8 Mathematics Core Courses (SSCE)

Students are required to complete 15 credits of Science and Mathematics courses as listed below:

Code	Name of Course	Credit
SSCE 1693	Engineering Mathematics I	3
SSCE 1793	Differential Equations	3
SSCE 1993	Engineering Mathematics II	3
SSCE 2193	Engineering Statistics	3
SSCE 2393	Numerical Methods	3
Total no. of compulsory university credit course		15

7.9 Co-Curricular Courses

7.9.1 Background

The co-curricular courses were first introduced as part of the University General Courses in July semester 1992/1993 Academic Session. It is compulsory for every student to take these courses as a pre-requisite for graduation.

The courses offered are managed by the General Courses and Co-curricular center. To attract the interest of students, a variety of courses are offered, and they are categorized into main modules such as Sports and Character Building, Personal and Social Development, Arts and Culture, and Special Programmes.

7.9.2 Requirements for Co-curricular Course Registration

The rules are applicable for students who are studying in the full-time programmes at the University.

- i. Open for students who are studying in the full-time programmes at UTM starting from year two (2) and above.
- ii. Maximum number of credit for Co-Curricular course allowed per semester is two (2).
- iii. Students are allowed to register only one Co-curricular course throughout the studies in UTM.
- iv. The Co-curricular courses are part of the University's General Courses. If a student failed in any of the courses, he/she may:
 - a. Repeat the course.
 - b. Substitute the course with another one but the failed course will still appear on the student's transcript and will be used in the calculation of the CGPA.
- v. Course Registration
 - a. Students are encouraged to register during compulsory registration period to ensure place during their choice.
 - b. Students may take any course offered to its availability.
 - c. Students are allowed to change course only during the amendment period.
 - d. The Rules and Regulations of registration are subject to change as deemed necessary by the University.
- vi. Credit Transfer (Credit Exemption)

- a. UTM graduates are eligible for Credit Transfer for all co-curricular courses they have taken in previous programme.
 - b. Direct entry students from other institutions of higher learning not allowed to get and exemption and need to take two (2) credits of co-curricular courses.
 - c. Credit transfer for graduates from other institutions of higher learning will only be given if the course is accredited and recognized by the General Courses and Co-curricular center.
 - d. Any core course taken in or out of UTM will not be considered although the contents are equivalent or of a higher standard.
 - e. Application for Credit Transfer must be made during the first semester of the study. Approval from the General Courses and Co-curricular center is required.
- vii. Final Examination Week
The final examination for the co-curricular courses, if any, will be held during the last week of lecture.

7.9.3 Implementation of Co-curricular Courses

Students are required to attend all courses as scheduled inclusive of outdoor or off campus activities such as camping, study tour, and social services. Every activity is designed to transfer theoretical knowledge to practical applications.

.Meeting Times

The meeting hours for co-curricular course is between 2.00pm - 7.00pm on every Tuesday. The time allocated for the courses is two hour lecture/practical activity every week.

i. **Marking Scheme**

The marking scheme usually followed by the trainers/lecturers is as follows:

- | | | |
|----|--|-----|
| a. | Contribution and Attendance | 20% |
| b. | Assignments/practical activities | 60% |
| | Types of tasks: | |
| | Portfolio | |
| | Assignment, group, or individual reports | |
| | Practical evaluation at site or lab | |
| c. | Tests and Quizzes | 20% |

ii. **Current Rules**

- a. Students are given the choice to select the activities that are of interest to them. However, the activities must be the ones offered by the General Courses and Co-curricular center for that semester. Registration for the course is subject to the availability of places.
- b. Upon registration for the course of their choice, students will not be allowed to change to another course. Students are recommended to consider their options carefully before making their decision. They are advised to refer to the timetable and the requirements of the activities before making the final decision.
- c. Students who register for the co-curricular course with less than 80% attendance without valid reasons accepted by the University, will be awarded zero (0) mark for the course. They need to repeat the course.
- d. Each student is responsible to ensure that the credit requirement for the co-curricular courses is fulfilled in accordance with the University's Regulations

7.10 Synopsis Of General Courses

Cluster 1	Malaysia Core Value
Cluster 2	Value and Identity
Cluster 3	Global Citizen
Cluster 4	Communication Skill
Cluster 5	Enterprising Skill

7.10.1 Cluster 1: Malaysia Core Value

Compulsory Courses

UHLM1012 Bahasa Melayu Communication 2

This course aims to train students to communicate in basic Malay in everyday life. Students will be exposed to spoken and written English language easily. Students will be exposed to basic Malay spoken and written. At the end of the course, students are expected to be able to communicate and write simple sentences effectively.

ULRS 1022 Philosophy and Current Issues

This course encapsulates philosophical relation to National Education Philosophy and the Rukun Negara. The use of philosophy as a tool to purify the culture of thought in life through the arts and methods of thinking and human concepts. The main topics in philosophy, namely epistemology, metaphysics, and ethics, are discussed in the context of current issues. Emphasis is given to philosophy as a basis for intercultural dialogue and to foster universal values. At the end of the course, students should be able to view the disciplines of knowledge as a whole and interdependent body of knowledge.

ULRS 1182 Appreciation of Ethics and Civilization

This course explains ethical concepts from the perspective of different civilizations. The course also aims to identify system, the level of development, advancement, and culture in strengthening social cohesion. Besides, discussion on the contemporary issues in the aspects of economy, politic, social, culture and environment from an ethical and civilization perspectives can produce students who are morally and professionally.

7.10.2 Cluster 2: Value and Identity

Compulsory Courses

ULRS1032 Integrity and Anti-corruption

This course highlights the main core of UTM which is a driving force for creative and innovative human capital to meet the needs of the country in the future. The main core is Integrity, Synergy, Excellence and Sustainability (ISES – Integrity, Synergy, Excellence and Sustainability). The basic concept that underlies this course is the value of integrity, value and self-identity that can curb all forms of misuse of power in everyday life and in organizations such as corruption, and anti-corruption measures. This course also emphasizes the importance of value systems and ethics, which include aspects of human relationships and managing/appreciating diversity. In addition, this course also emphasizes holistic solutions to current issues, transformation and innovation, philosophy of science and technology based on values, integrity and self-identity towards achieving the goal of producing excellent graduates in terms of physical, emotional, spiritual and intellectual. This effort is in line with the country's

commitment in implementing the Sustainable Development Agenda (SDG) by 2030 through the Shared Prosperity Vision 2030 agenda by providing a good standard of living for all citizens by 2030.

7.10.3 Cluster 3: Global Citizen

Compulsory Courses

ULRF** Credit Co-curricular Courses**

7.10.4 Cluster 4: Communication Skill

Compulsory Courses

UHLB 2122 Professional Communication Skills 2

The course prepares students for advanced academic communication in English with emphasis on oral communication skills. Students will be assigned projects that require them to look for and extract relevant information from various sources. In the process of completing the project assigned, students will put into practice various skills developed in the earlier subject as well as skills in collecting data through interviews and questionnaire survey, integrating, and presenting information (in oral and written form), time management and group interaction. The various oral activities such as presenting a proposal of the project, giving a briefing on the progress of the report, and presenting the completed report are designed to build students' oral communication skills and confidence in expressing themselves, i.e., skills that are much needed in their study and career.

UHLB 3132 Professional Communication Skills 3

The course focuses on the techniques of producing good spoken discourses which include public communication such as impromptu and public speeches, group discussion and negotiation. Aspects of sound and speech production will be introduced to improve intelligibility and communicability. Basic principles of oral communication and the importance of non-verbal communication will be introduced for effective communication. Students will have substantial practice in oral communication through in-class tasks and activities. These tasks and activities will enhance students' confidence in using English for academic and professional purpose.

7.10.5 Cluster 5: Enterprising Skill

Compulsory Courses

ULRS 1032 Innovation and Entrepreneurship

This course is designed to expose students to the concept of entrepreneurship and entrepreneurs and the skills needed to prepare a good business plan. In addition to exposing the students to the characteristics of successful entrepreneurs, various skills to successfully run and manage entrepreneurial ventures, technique of identifying, evaluating, and choosing business opportunities, procedures to form a business, planning, funding, and business supports.

7.10.6 Mathematics Course Compulsory Courses

SSCE 1693 Engineering Mathematics I

This is the first course in Engineering Mathematics. It covers topics including differentiation and integration which focus on hyperbolic and inverse functions. Improper integrals are also studied. Vectors and matrices including basic operations, solving related problems in 3 dimensions are discussed. In addition, vector spaces, eigenvalues and eigenvectors are introduced. Sketching of polar graphs is discussed. This course also covers complex numbers, function of complex variable, series, and power series.

SSCE 1793 Differential Equations

Pre-requisite: SSCE 1693 Engineering Mathematics I

This is an introductory course on differential equations. Topics include first order ordinary differential equations (ODEs), linear second order ODEs with constant coefficients up to fourth order, the Laplace transform and its inverse, Fourier series, and partial differential equation (PDEs). Students will learn how to classify and solve first order ODEs, use the techniques of undetermined coefficients, variation of parameters and the Laplace transform to solve ODEs with specified initial and boundary conditions, and use the technique of separation of variables to solve wave equation.

SSCE 1993 Engineering Mathematics II

Pre-requisite: SSCE 1693 Engineering Mathematics I

This course is about multivariable calculus of real and vector-valued functions. The basic theory of partial derivatives and multiple integrals of real function with their application are discussed. This theory is extended to vector valued functions to describe motion in space, directional derivatives, gradient, divergence and curl, line integrals, surface integrals and volume integral. Related theorems, namely Green's Theorem, Stokes' Theorem and Gauss Divergence Theorem and their applications are discussed.

SSCE 2193 Engineering Statistics

This course begins with basic statistics, elementary probability theory and properties of probability distributions. Introduction to sampling distribution, point and interval estimation of parameters and hypothesis testing are also covered. Simple linear regression and one-way analysis of variance are also taught in this course. Students are taught how to use and incorporate statistical tools and software for solving engineering statistics problems through a group assignment.

SSCE 2393 Numerical Methods

This course discusses problem solving using numerical methods that involve non-linear equations, systems of linear equations, interpolation and curve fitting, numerical differentiation and numerical integration, eigenvalue problems, ordinary differential equations and partial differential equations.

8 APPENDIX: GRADUATION CHECKLIST

To graduate, students must pass all the stated courses in the checklist. It is responsibility of the students to ensure that all courses are taken and passed. Students who do not complete any of the courses are not allowed to graduate.

NO.	CODE	COURSE	CREDIT EARNED (JKD)	CREDIT COUNTED (JKK)	GRADE
a) CIVIL ENGINEERING COURSES					
1	SEAA 1011	Civil Engineering Fundamentals	1	1	
2	SEAA 1023	Engineering Surveying	3	3	
3	SEAA 1031	Survey Camp (YEAR 1/ SHORT SEMESTER)	1	HL	
4	SEAA 1213	Engineering Mechanics	3	3	
5	SEAA 1422	Engineering Drawing	2	2	
6	SEAA 1513	Fluid Mechanics	3	3	
7	SEAA 1713	Soil Mechanics	3	3	
8	SEAA 2012	Civil Engineering Laboratory 1	2	2	
9	SEAA 2032	Mechanical & Electrical Systems	2	2	
10	SEAA 2112	Civil Engineering Materials	2	2	
11	SEAA 2223	Mechanics of Materials and Structures	3	3	
12	SEAA 2413	Computer Programming	3	3	
13	SEAA 2513	Hydraulics	3	3	
14	SEAA 2712	Engineering Geology and Rock Mechanics	2	2	
15	SEAA 2722	Geotechnics 1	2	2	
16	SEAA 2832	Highway Engineering	2	2	
17	SEAA 2912	Water Treatment	2	2	
18	SEAA 2922	Wastewater Engineering	2	2	
19	SEAA 3012	Civil Engineering Laboratory 2	2	2	
20	SEAA 3022	Integrated Design Project 1	2	2	
21	SEAA 3045	Industrial Training (YEAR 3/SHORT SEM.) for 12 weeks/3 months	5	HL	
22	SEAA 3123	Construction Technology, Estimating & Contract	3	3	
23	SEAA 3243	Theory of Structures	3	3	
24	SEAA 3313	Reinforced Concrete Design I	3	3	
25	SEAA 3323	Structural Steel & Timber Design	3	3	
26	SEAA 3412	Building Information Modelling & Data Management	2	2	
27	SEAA 3613	Hydrology and Water Resources	3	3	
28	SEAA 3712	Geotechnics 2	2	2	
29	SEAA 3842	Traffic Engineering	2	2	
30	SEAA 3913	Environmental Management	3	3	
31	SEAA 4021	Civil Engineering Seminar (SEMKA)	1	HL	
32	SEAA 4022	Research Methodology and Pre-Project	2	2	
33	SEAA 4034	Final Year Project	4	4	

34	SEAA 4032	Integrated Design Project 2	2	2	
35	SEAA 4113	Construction & Project Management	3	3	
36	SEAA 4223	Structural Analysis	3	3	
37	SEAA 4333	Reinforced Concrete Design 2	3	3	
38	SEAA 4##3	Elective 1	3	3	
39	SEAA 4##3	Elective 2	3	3	
40	SEAA 4##3	Elective 3	3	3	
TOTAL CREDIT OF CIVIL ENGINEERING COURSES (a)			101	94	
b) MATHEMATICS COURSES (Faculty of Science)					
1	SSCE 1693	Engineering Mathematics I	3	3	
2	SSCE 1793	Differential Equations	3	3	
3	SSCE 1993	Engineering Mathematics II	3	3	
4	SSCE 2193	Engineering Statistics	3	3	
5	SSCE 2393	Numerical Methods	3	3	
TOTAL CREDIT OF MATHEMATICS COURSES (b)			15	15	
c) UNIVERSITY GENERAL COURSES					
Cluster 1: Malaysia Core Value (2 courses only)					
1	ULRS1182	Appreciation of Ethics & Civilisations	2	2	
2	ULRS1022	Philosophy and Current Issues (for local students only)	2	2	
3	UHLM1012	Malay Language Communication 2 (for International Students only)	2	2	
Cluster 2: Value & Identity					
1	ULRS1032	Integrity and Anti-Corruption	2	2	
Cluster 3: Global Citizen					
1	ULRF 2##2	Co-Curriculum & Service Learning	2	2	
Cluster 4: Communication Skills					
1	UHLB2122	Professional Communication Skills 2	2	2	
2	UHLB3132	Professional Communication Skills 3	2	2	
3	UHL# 1112	Elective Of Foreign Language	2	2	
Cluster 5: Enterprising Skills					
1	ULRS3032	Innovation & Entrepreneurship	2	2	
Cluster 6 : Free Elective					
1	#### ##3	* to be taken at other faculty	3	3	
TOTAL CREDIT of UNIVERSITY GENERAL COURSES (c)			19	19	
TOTAL CREDIT TO GRADUATE (a + b + c)			135	128	
Professional Skills Certificate (PSC) (SPACE/FKA)					
1	GLRM0010	Talent and Competency Management (TCM)			
2	GLRB0010	Design Thinking for Entrepreneur (DTE)			
3	GLRL0010	English Communication Skills For Graduating Students (ECS)			
4	GLRT00##	Electives Courses			
5	GLRT00##	Electives Courses			

9 ACKNOWLEDGEMENT

The UTM-Faculty of Civil Engineering would like to acknowledge the following staff for their contribution in preparing this academic guideline:

Assoc. Prof. Dr. Suhaimi Bin Abu Bakar @ Md. Ramli
Assoc. Prof. Ir. Ts. Dr. Mohamad Hidayat Bin Jamal
Assoc. Prof. Dr. Roslli Bin Noor Mohamed
Ts. Dr Radzuan bin Saari
Dr. Nor Fazlin Binti Zamri
Dr. Faridahanim Binti Ahmad
Ts. Dr. Muhammad Farhan Bin Zolkepli
Ir. Kamaliah Binti Mohd Saha
Dr. Siti Nur Fatimah Binti Moideen
Dr. Nurul Syahira Binti Mohammad Harmay
Puan Azmunalisa Binti Adam
Puan Zamila Binti Jalil
En Mas Izudin Bin Mohd Ali
En Sharizan Bin Ibrahim

Assoc. Prof. Dr. Suhaimi Bin Abu Bakar @ Md. Ramli

Dean
Faculty Of Civil Engineering
Universiti Teknologi Malaysia
81310 Johor Bahru.



INNOVATING SOLUTION