

# *Management* **REPORT**

Annual Report 2009



# Academic Development



The academic division was established to manage matters related to academic and students' affairs in the Faculty. Its main function is to initiate and manage a quality teaching and learning management system as well as to assist lecturers, students and outside corporations in organizing academic related activities.

This division is also responsible in organizing the Faculty's other academic matters. The responsibilities include timetabling, utilization of lecture halls, lecture and tutorial rooms as well as carrying out teaching evaluation, arranging the examination schedule, managing publicity for each programme, students' projects, industrial training, alumni affairs, students' society and club activities.

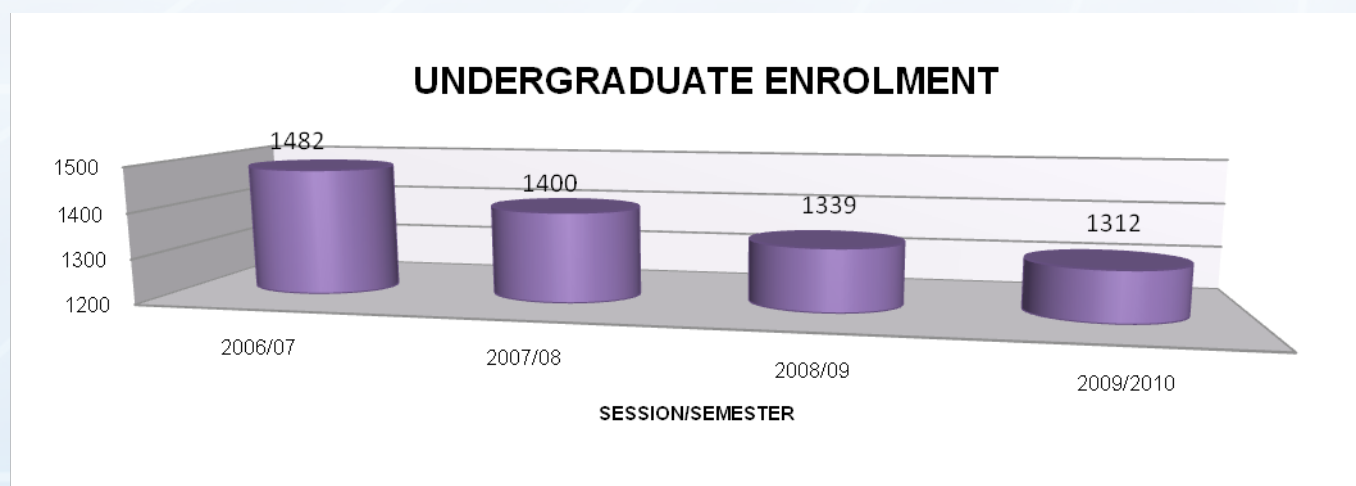
The Faculty is always striving, within its financial capabilities to increase the number of students. In 2009, the number of students increased by 5%.

## UNDERGRADUATE STUDENTS

The table below shows the number of graduates from the Faculty of Civil Engineering until 2010. The number of students obtaining 2<sup>nd</sup> class lower has decreased over the years. This was due to the continuing effort by the Faculty to improve the students' performance through their academic advisors or academic enhancement programmes such as discussions or outdoor activities.

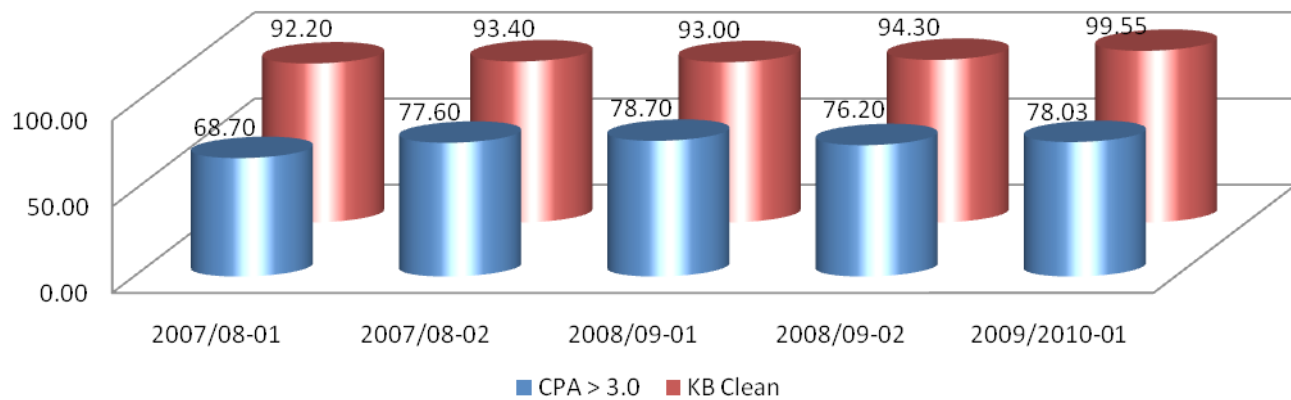
SESSION	SEMESTER	1ST CLASS	2ND CLASS UPPER	2ND CLASS LOWER	3RD CLASS	TOTAL
2007/2008	1	1	16	46	1	64
2007/2008	2	52	232	68	-	352
2008/2009	1	6	42	12	-	60
2008/2009	2	50	164	20	-	234
2009/2010	1	4	39	5	-	48

The graph below shows the enrolment of undergraduates until 2010. There was a decrease in the number of student intake from the year 2006 to 2010. This was due to the University's policy to maintain good staff-student ratio for undergraduates and to balance the number of undergraduates and postgraduate students.



The continuing monitoring of the students' performance has produced satisfactory results. The table below shows the number of KB Clean and CPA > 3.0 has increased from the year 2007/2008 to 2009/2010.

### UNDERGRADUATE KB CLEAN & CPA > 3.0



	Registered					Graduated				GoT
	Matric	SAW	SAP	SAS	Total	S1	2T	2R	Total	
42 <sup>nd</sup> Convocation 2008/09-1	BA05	49	0	0	49	6	37	2	45	91.84
	Total	49	0	0	49	6	37	2	45	
43 <sup>rd</sup> Convocation 2008/09-2	Matric	SAW	SAP	SAS	Total	S1	2T	2R	Total	84.7
	AA05	124	11	13	148	23	100	14	137	
	BA06-1	120	0	0	120	27	62	1	90	
	Total	224	11	13	268	50	162	15	227	

However the result of GoT has decreased from 91.84% in the 2008/09-1 session to 67.24% in 2009/2010-1 session. There were students who did not graduate on time because of academic, health and disciplinary problems

The Faculty has implemented the following measures to improve students to graduate on time (GoT):

1. Improve academic advisory system, including monitoring students' performances.
2. Review students' timetable and reduce the average credit hours per semester to about 16.

## POSTGRADUATE STUDENTS

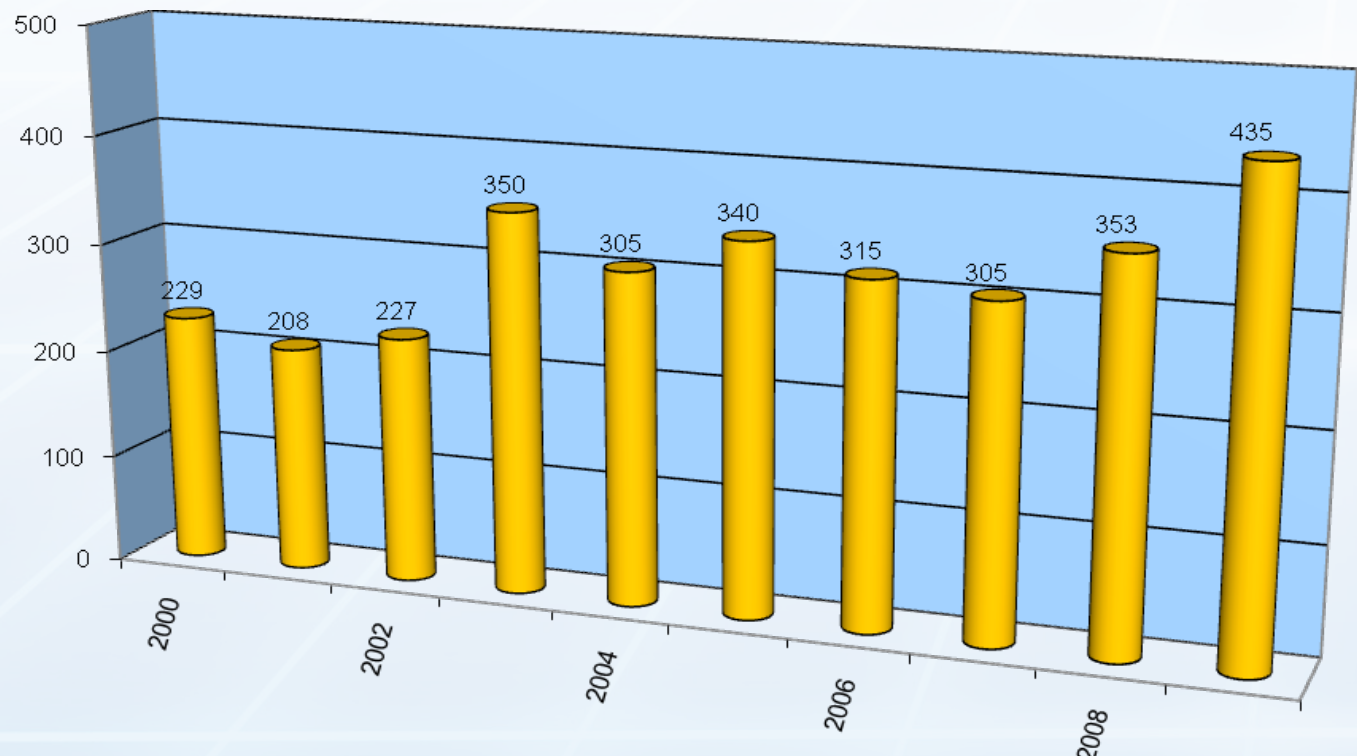
Postgraduate programmes are offered by all departments in the faculty. The degrees awarded are Master of Engineering (M.Eng), Master of Science (M.Sc), Doctor of Philosophy (Ph.D), and Engineering Doctorate (Eng.D). The master programmes are conducted in full taught course, full research or mixed mode i.e. taught course + research. The mixed programme was first offered in the 2009/10 academic session.

The master programmes offered by each department are:

- Department of Structures and Materials
  - \* M.Eng (Civil – Structures), MAE
  - \* M.Sc. (Construction Management), MAM
  - \* M.Sc. (Project Management), MAZ
- Department of Geotechnics & Transportation
  - \* M.Eng (Civil – Geotechnics), MAJ
  - \* M.Eng (Civil – Transportation) , MAP
- Department of Hydraulics and Hydrology
  - \* M.Eng (Civil – Hydraulics and Hydrology), MAG
  - \* M.Eng (Civil – Hydrology and Water Resources), MAL
- Department of Environmental Engineering
  - \* M.Eng (Civil – Environmental Management), MAK
  - \* M.Eng (Civil – Waste Water), MAS

The graph shows the total enrolment of post graduate students from 2000 to 2009 (semester 2 2008/09 session). The number includes those who are in the English course. For the current academic session, in proportion to the number of undergraduate students, the number of post graduate students is about 30%.

In KL campus, the courses are conducted during the weekends only, and are on part-time basis.



## POST-GRADUATE STUDENT ENROLMENT ACCORDING TO SEMESTER

Course	Semester I 2004/2005 Session	Semester II 2004/2005 Session	Semester I 2005/2006 Session	Semester II 2005/2006 Session	Semester I 2006/2007 Session	Semester II 2006/2007 Session	Semester I 2007/2008 Session
MAE	49	<i>JB 23</i> <i>KL 27</i>	<i>JB 28</i> <i>KL 23</i>	JB 25 KL 18	JB 28 KL 17	JB 28 KL 22	JB 43 KL 20
MAG	11	10	10	10	12	9	10
MAP	10	12	16	14	14	14	19
MAJ	19	<i>JB 17</i> <i>KL 9</i>	<i>JB 16</i> <i>KL 15</i>	JB 13 KL 18	JB 11 KL 13	JB 13 KL 14	JB 14 KL 11
MAK	17	17	19	19	16	12	16
MAL	1	2	2	1	3	7	8
MAS	-	-	12	12	JB 5 KL 9	JB 3 KL 9	JB 3 KL 2
MAM	98	<i>JB 27</i> <i>KL 58</i>	<i>JB 40</i> <i>KL 55</i>	JB 40 KL 52	JB 34 KL 46	JB 29 KL 38	JB 41 KL 30
Eng. D	3	4	4	4	6	6	7
MAW*	JSB	20	16	19	13	16	12
	JGP	5	6	3	3	3	1
	JHH	14	10	9	9	8	7
	JAS	15	11	10	8	9	6
PAW*	JSB	21	27	31	32	36	39
	JGP	7	9	8	8	9	10
	JHH	6	6	10	9	10	11
	JAS	9	11	10	9	11	12
<b>TOTAL</b>	<b>312</b>	<b>305</b>	<b>340</b>	<b>317</b>	<b>316</b>	<b>302</b>	<b>333</b>
<b>%</b>	<b>-</b>	<b>-</b>	<b>-</b>	<b>11 %</b>	<b>-</b>	<b>15.6 %</b>	

\* Research

MM - Mixed Mode

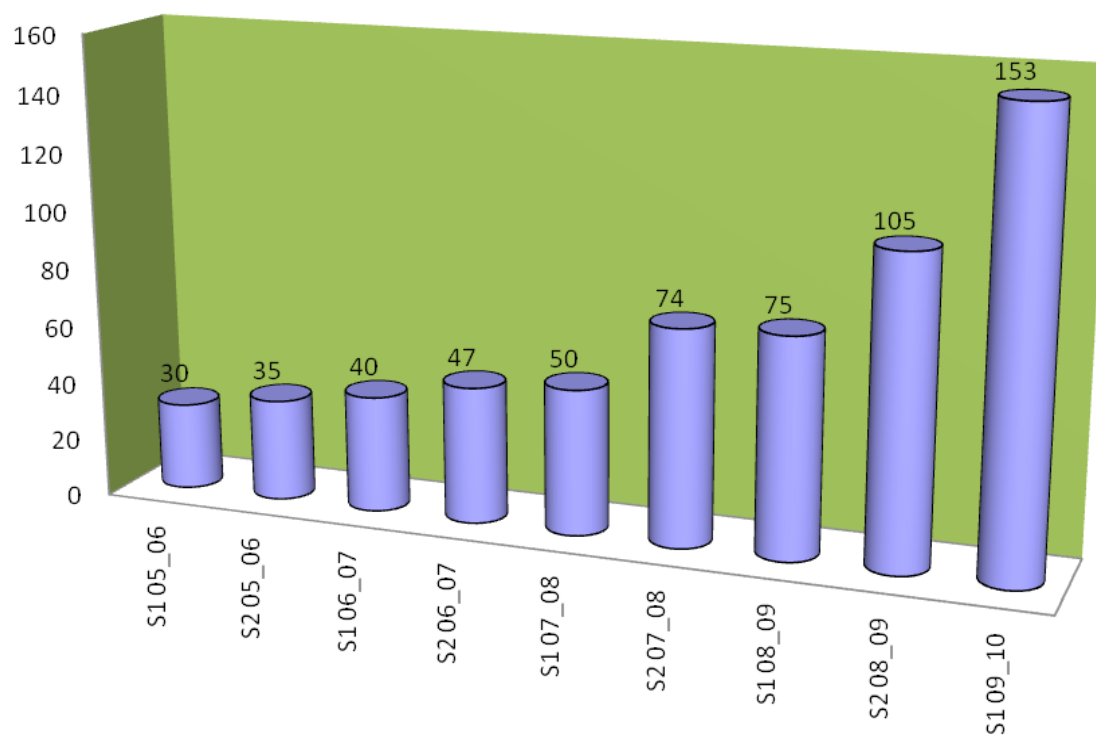
**POST-GRADUATE STUDENT ENROLMENT ACCORDING TO SEMESTER (CONT.)**

Course	SemesterII Session 2007/2008	SemesterI Session 2008/2009	SemesterII Session 2008/2009	SemesterI Session 2009/2010	SemesterII Session 2009/2010
MAE	<i>JB 41</i> <i>KL 29</i>	<i>JB 49</i> <i>KL 33</i>	<i>JB 55</i> <i>KL 31</i>	<i>JB 65</i> <i>KL 22</i> <i>JB(MM) 4</i>	<i>JB 47</i> <i>KL 21</i>
MAG	<i>10</i>	<i>10</i>	<i>11</i>	<i>12</i> <i>JB(MM) 3</i>	<i>8</i>
MAP	<i>21</i>	<i>29</i>	<i>30</i>	<i>38</i> <i>JB(MM) 1</i>	<i>28</i>
MAJ	<i>JB 16</i> <i>KL 9</i>	<i>JB 15</i> <i>KL 19</i>	<i>JB 20</i> <i>KL 14</i>	<i>JB 24</i> <i>KL 14</i>	<i>24</i> <i>14</i>
MAK	<i>9</i>	<i>JB 29</i> <i>KL 2</i>	<i>JB 32</i> <i>KL 2</i>	<i>JB 22</i> <i>KL 2</i>	<i>8</i>
MAL	<i>6</i>	<i>6</i>	<i>5</i>	<i>10</i>	<i>6</i>
MAS	<i>JB 1</i> <i>KL 2</i>	<i>1</i>	<i>1</i>	<i>1</i>	<i>-</i>
MAZ	<i>-</i>	<i>-</i>	<i>21</i>	<i>KL 47</i>	<i>KL 49</i>
MAA	<i>-</i>	<i>-</i>	<i>-</i>	<i>1</i>	<i>-</i>
MAM	<i>JB 47</i> <i>KL 26</i>	<i>JB 53</i> <i>KL 34</i>	<i>JB 60</i> <i>KL 37</i>	<i>JB 60</i> <i>KL 37</i>	<i>JB 43</i> <i>KL 37</i>
Eng. D	<i>9</i>	<i>8</i>	<i>8</i>	<i>11</i>	<i>15</i>
MAW *	<i>JSB</i>	<i>24</i>	<i>24</i>	<i>26</i>	<i>25</i>
	<i>JGP</i>	<i>6</i>	<i>7</i>	<i>9</i>	<i>8</i>
	<i>JHH</i>	<i>11</i>	<i>10</i>	<i>8</i>	<i>9</i>
	<i>JAS</i>	<i>9</i>	<i>11</i>	<i>11</i>	<i>8</i>
PAW *	<i>JSB</i>	<i>38</i>	<i>37</i>	<i>50</i>	<i>44</i>
	<i>JGP</i>	<i>11</i>	<i>16</i>	<i>24</i>	<i>25</i>
	<i>JHH</i>	<i>13</i>	<i>14</i>	<i>18</i>	<i>19</i>
	<i>JAS</i>	<i>16</i>	<i>15</i>	<i>18</i>	<i>15</i>
<b>TOTAL</b>	<b>353</b>	<b>423</b>	<b>458</b>	<b>541</b>	<b>461</b>

\* Research

MM – Mixed Mode

Foreign students contribute significantly to the total number of postgraduate students in the faculty. The graph shows the intake of foreign students for the Faculty of Civil Engineering based on first and second semesters from year 2003 to 2009. In the current semester, about 30 % of the students are foreign students.



Country	Number of students for academic session					
	2007/2008-1	2007/2008-2	2008/2009-1	2008/2009-2	2009/2010-1	2009/2010-2
Yemen	3	1	-	2	2	2
Indonesia	19	23	26	17	25	26
Iran	5	22	20	59	89	96
Nigeria	2	2	4	4	7	10
Arab Saudi	-	-	-	-	1	1
Pakistan	3	-	-	-	-	-
Iraq	1	4	3	8	8	8
Somalia	1	2	2	1	1	1
Libya	10	13	15	13	7	3
Sudan	1	3	-	5	2	5
Oman	4	3	4	3	3	3
India	-	-	-	-	-	1
Vietnam	1	1	1	-	-	-
Total foreign students	50	74	75	105	154	156
Malaysia	283	277	348	353	388	315
<b>TOTAL</b>	<b>333</b>	<b>315</b>	<b>423</b>	<b>458</b>	<b>541</b>	<b>471</b>

## STUDY VISIT / STUDENTS' PROJECTS



Group photo of students at quarry, Masai

NO.	DATE	ADVISOR	PROJECT/VENUE	NUMBER OF STUDENTS
1.	21 – 23/1/2009	Dr. Rozana Zakaria Dr. Khairulzan Yahya	Day Trip to Malaysian IBS International Exhibition 2009 (MIIE09) - IBS Convention Centre, Kuala Lumpur	100 students Construction Technology (SAB 3122 course)
2.	19 – 21/2/2009	Dr. Rozana Zakaria Dr. Khairulzan Yahya	Day Trip to Technology EXPO 2009 - Putra World Trade Centre, Kuala Lumpur	120 students (SAB 3122 course)
3.	28/2 – 1/3/2009	Dr. Rozana Zakaria	Workshop on Planning & Scheduling Using Microsoft Project 2009 - The Balau Resort, Tanjung Balau, Johor.	53 students (SAB 4113 course)
4.	27/2 – 1/3/2009	Dr. Rozana Zakaria	Workshop on Planning & Scheduling Using Microsoft Project 2009 - Tanjung Sepang Beach Resort, Teluk Ramunia, Johor.	Civil Engineering Society, 53 students for Construction Project Management
5.	4/4/2009	Dr. Airil Yasreen Mohd Yassin	Career Exposure of Civil Engineering 2009 - Smart Classroom D02, UTM Skudai	Civil Engineering Society, 150 students
6.	16 – 19/7/2009	Dr. Airil Yasreen Mohd Yassin	Wawasan Desa Ilmu IPT/PEKA Bersama Masyarakat 2009 - Batu 9, Tangga Batu Pekan, Tajung Keling, Melaka.	Civil Engineering Society
7.	7 – 11/9/2009	Dr. Airil Yasreen Mohd Yassin	Research University Week - Blok M47, FKA.	Civil Engineering Society
8.	19 – 20/10/2009	Dr. Rozana Zakaria	Workshop on Planning & Scheduling Using Microsoft Project 2009 - Tiram Indah Village, Ulu Tiram, Johor.	60 students (SAB 4113 course)
9.	16 - 19/11/2009	Dr. Airil Yasreen Mohd Yassin	Solidarity of Manoeuvring and Observation in Advanced Technology for Civil Engineering Purposes 2009 (SMAT-CEP 2009) - Johor, Selangor dan Kuala Lumpur	Civil Engineering Society (PEKA) 62 students



STUDENTS' COMPETITION



Deepwater Floating Structure Model Competition  
"Exploring The Frontier"



E-Seer at NCREE, Taiwan IDEERO  
Competition in Tainpei, Taiwan



Asean Universities Build and Break Competition



UTM Bridge Model

