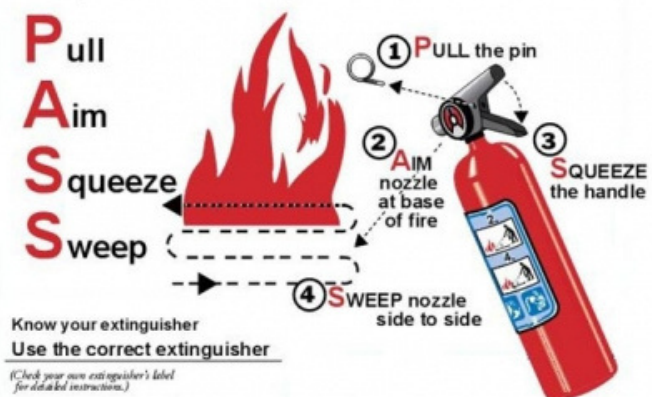


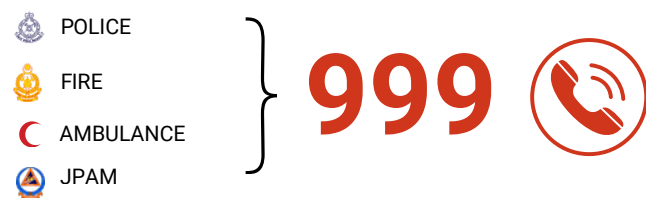
EXTINGUISHER OPERATION

To operate an extinguisher:



EMERGENCY TELEPHONE NUMBERS

GENERAL EMERGENCY NUMBER



INTERNAL EMERGENCY NUMBER

| | |
|-----------------------|---------------------------|
| UTM SECURITY DIVISION | 07-533 3013 / 07-553 0002 |
| UTM HEALTH CENTRE | 07-553 0999 |
| OSHE UTM | 07-553 1886 |

IF THERE IS AN EMERGENCY

IF THERE IS AN EMERGENCY

- Active the building alarm and ER team.
- Evacuate immediately.
- Exit the building using the nearest exit.
- Report to the nearest designated assembly area.
- Do not re-enter until authorized to do so

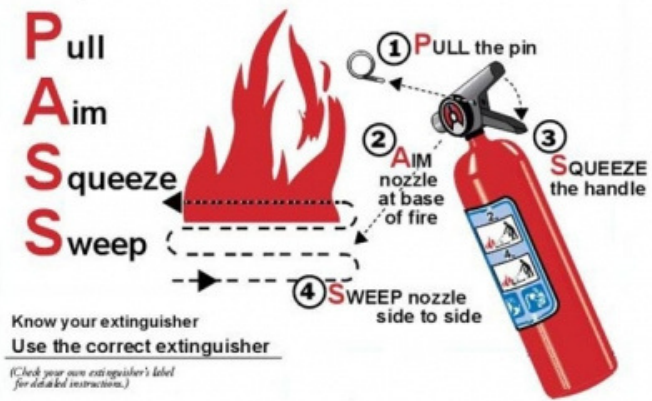
EMERGENCY EVACUATION PLAN

BLOK M46, ARAS 2, PBL 1



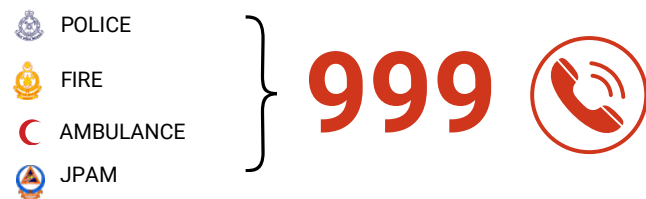
EXTINGUISHER OPERATION

To operate an extinguisher:



EMERGENCY TELEPHONE NUMBERS

GENERAL EMERGENCY NUMBER



INTERNAL EMERGENCY NUMBER

| | |
|-----------------------|---------------------------|
| UTM SECURITY DIVISION | 07-533 3013 / 07-553 0002 |
| UTM HEALTH CENTRE | 07-553 0999 |
| OSHE UTM | 07-553 1886 |

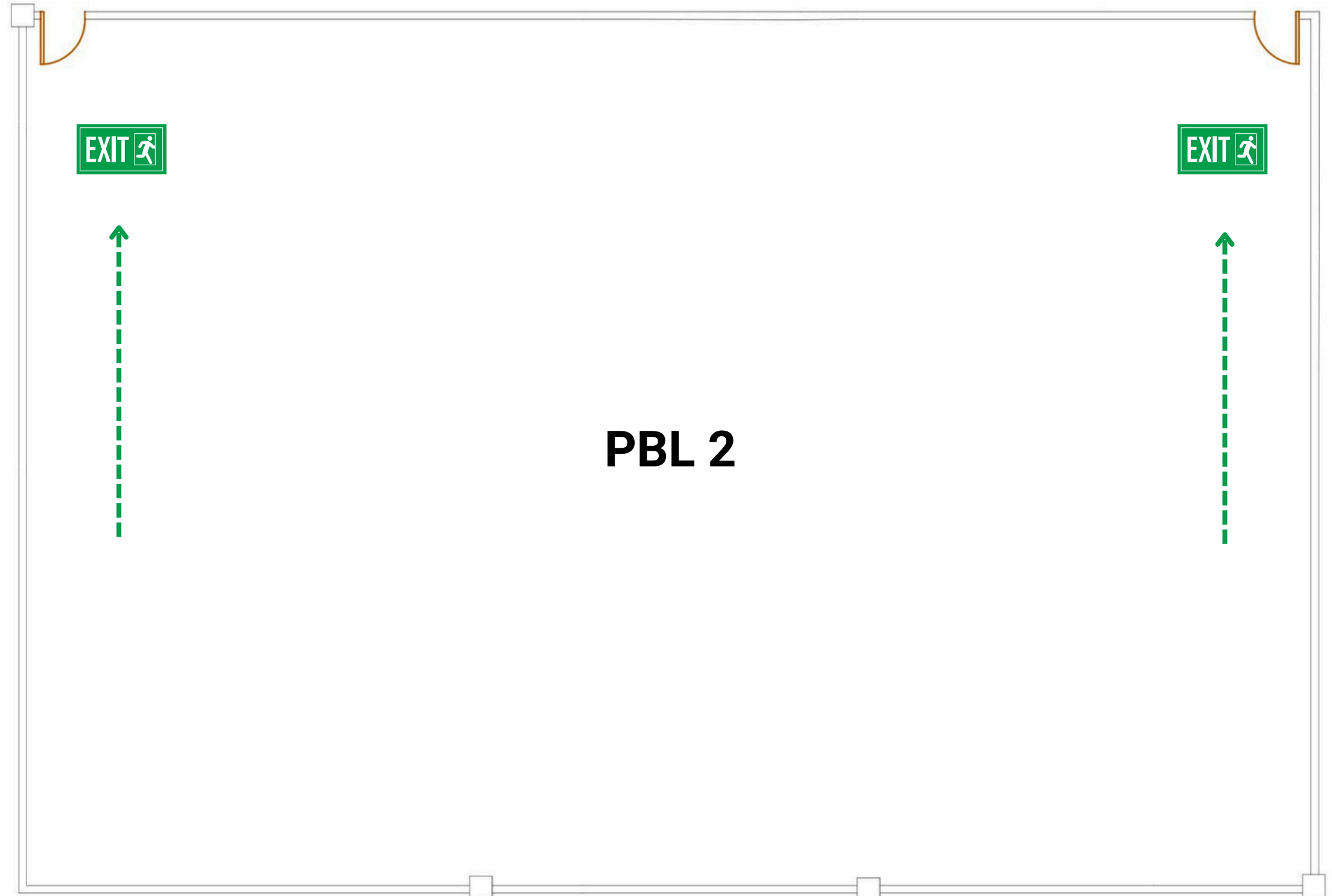
IF THERE IS AN EMERGENCY

IF THERE IS AN EMERGENCY

- Active the building alarm and ER team.
- Evacuate immediately.
- Exit the building using the nearest exit.
- Report to the nearest designated assembly area.
- Do not re-enter until authorized to do so

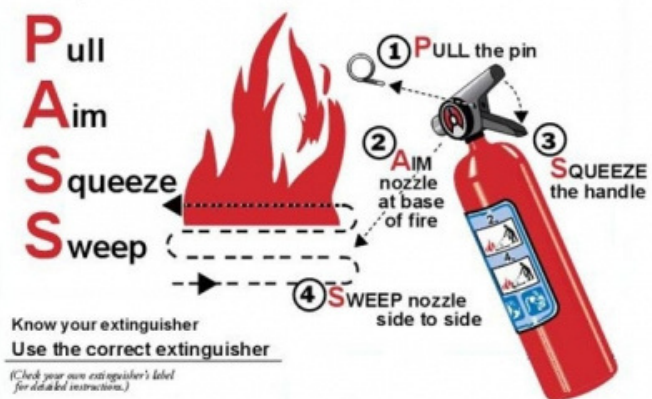
EMERGENCY EVACUATION PLAN

BLOK M46, ARAS 2, PBL 2



EXTINGUISHER OPERATION

To operate an extinguisher:



EMERGENCY TELEPHONE NUMBERS

GENERAL EMERGENCY NUMBER



INTERNAL EMERGENCY NUMBER

| | |
|-----------------------|---------------------------|
| UTM SECURITY DIVISION | 07-533 3013 / 07-553 0002 |
| UTM HEALTH CENTRE | 07-553 0999 |
| OSHE UTM | 07-553 1886 |

IF THERE IS AN EMERGENCY

IF THERE IS AN EMERGENCY

- Active the building alarm and ER team.
- Evacuate immediately.
- Exit the building using the nearest exit.
- Report to the nearest designated assembly area.
- Do not re-enter until authorized to do so

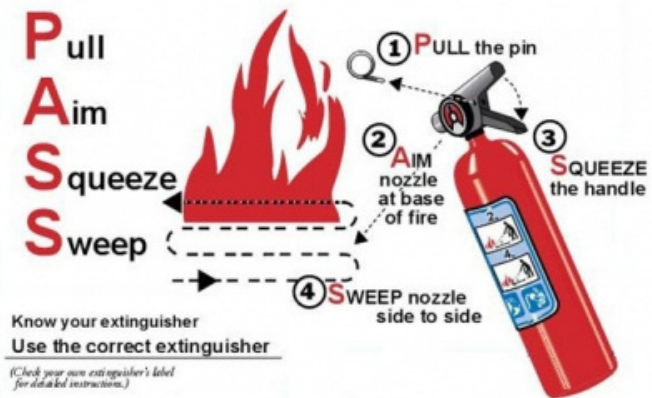
EMERGENCY EVACUATION PLAN

BLOK M46, ARAS 2, BILIK SEMINAR



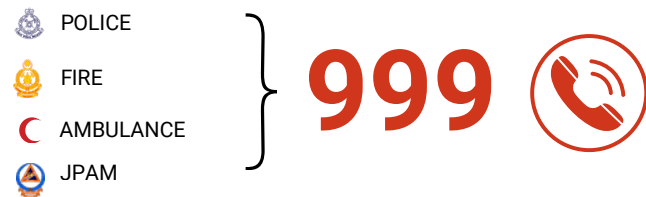
EXTINGUISHER OPERATION

To operate an extinguisher:



EMERGENCY TELEPHONE NUMBERS

GENERAL EMERGENCY NUMBER



INTERNAL EMERGENCY NUMBER

| | |
|-----------------------|---------------------------|
| UTM SECURITY DIVISION | 07-533 3013 / 07-553 0002 |
| UTM HEALTH CENTRE | 07-553 0999 |
| OSHE UTM | 07-553 1886 |

IF THERE IS AN EMERGENCY

IF THERE IS AN EMERGENCY

- Active the building alarm and ER team.
- Evacuate immediately.
- Exit the building using the nearest exit.
- Report to the nearest designated assembly area.
- Do not re-enter until authorized to do so

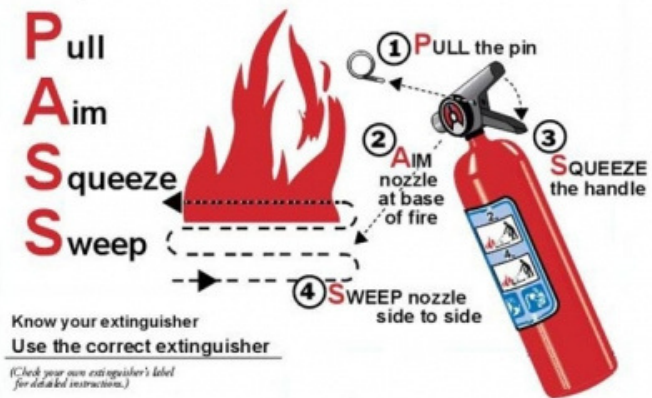
EMERGENCY EVACUATION PLAN

BLOK M46, ARAS 2, BILIK KUALITI



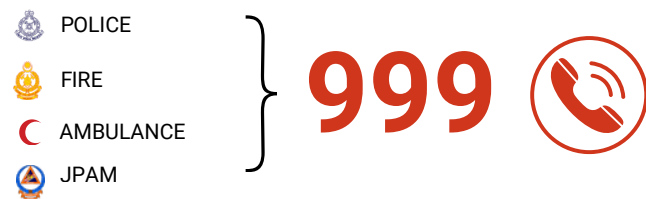
EXTINGUISHER OPERATION

To operate an extinguisher:



EMERGENCY TELEPHONE NUMBERS

GENERAL EMERGENCY NUMBER



INTERNAL EMERGENCY NUMBER

| | |
|-----------------------|---------------------------|
| UTM SECURITY DIVISION | 07-533 3013 / 07-553 0002 |
| UTM HEALTH CENTRE | 07-553 0999 |
| OSHE UTM | 07-553 1886 |

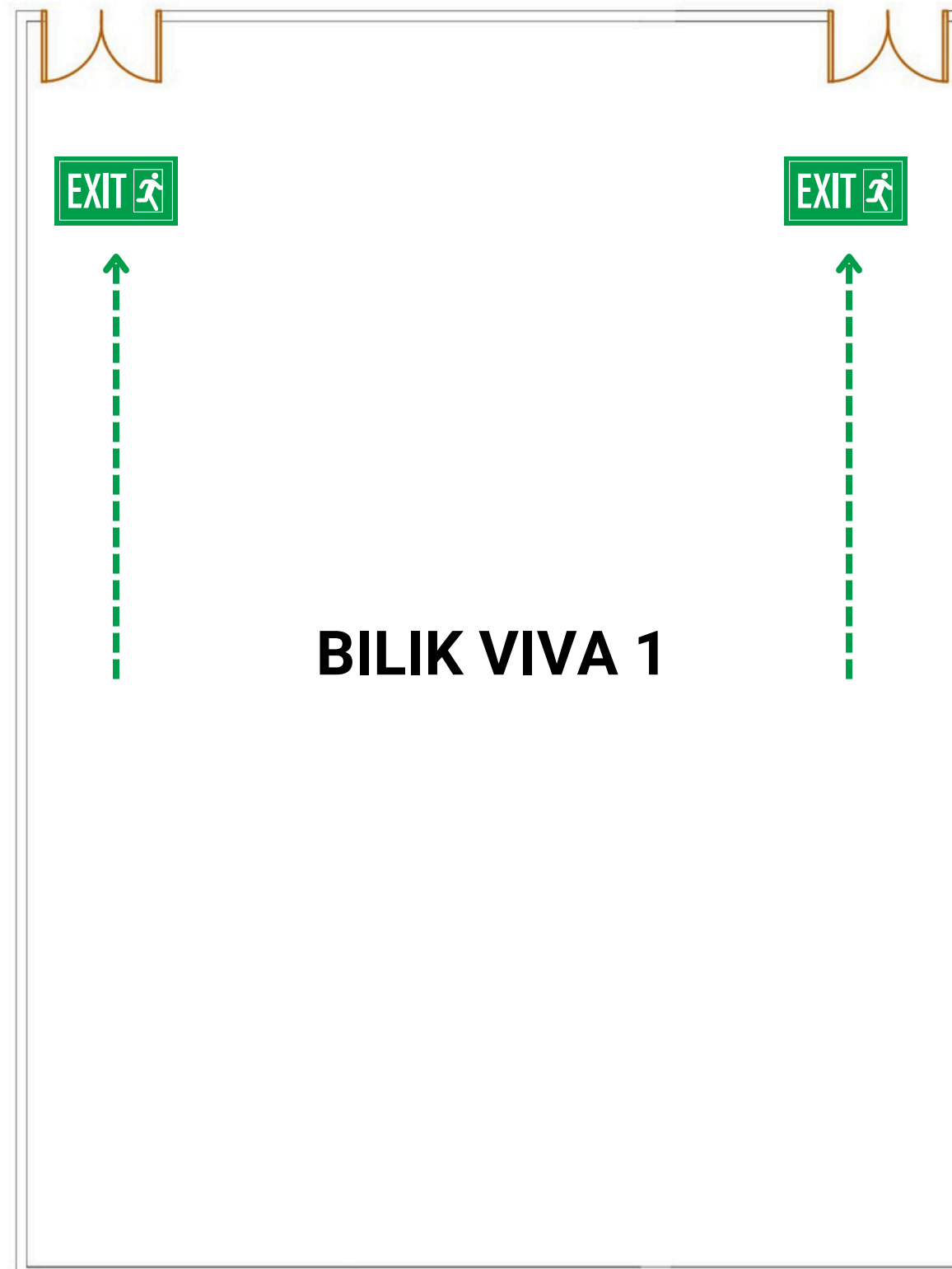
IF THERE IS AN EMERGENCY

IF THERE IS AN EMERGENCY

- Active the building alarm and ER team.
- Evacuate immediately.
- Exit the building using the nearest exit.
- Report to the nearest designated assembly area.
- Do not re-enter until authorized to do so

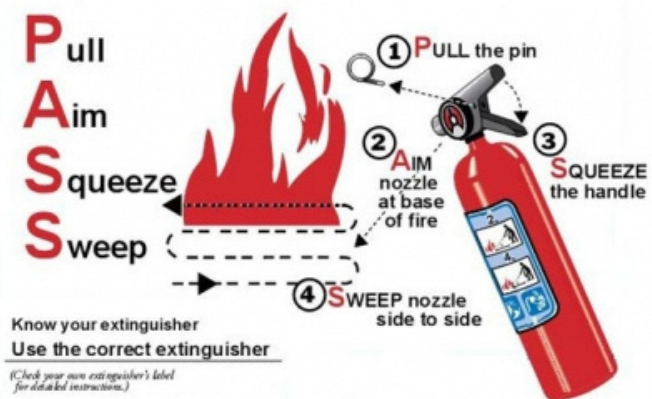
EMERGENCY EVACUATION PLAN

BLOK M46, ARAS 2, BILIK VIVA 1



EXTINGUISHER OPERATION

To operate an extinguisher:



EMERGENCY TELEPHONE NUMBERS

GENERAL EMERGENCY NUMBER



INTERNAL EMERGENCY NUMBER

| | |
|-----------------------|---------------------------|
| UTM SECURITY DIVISION | 07-533 3013 / 07-553 0002 |
| UTM HEALTH CENTRE | 07-553 0999 |
| OSHE UTM | 07-553 1886 |

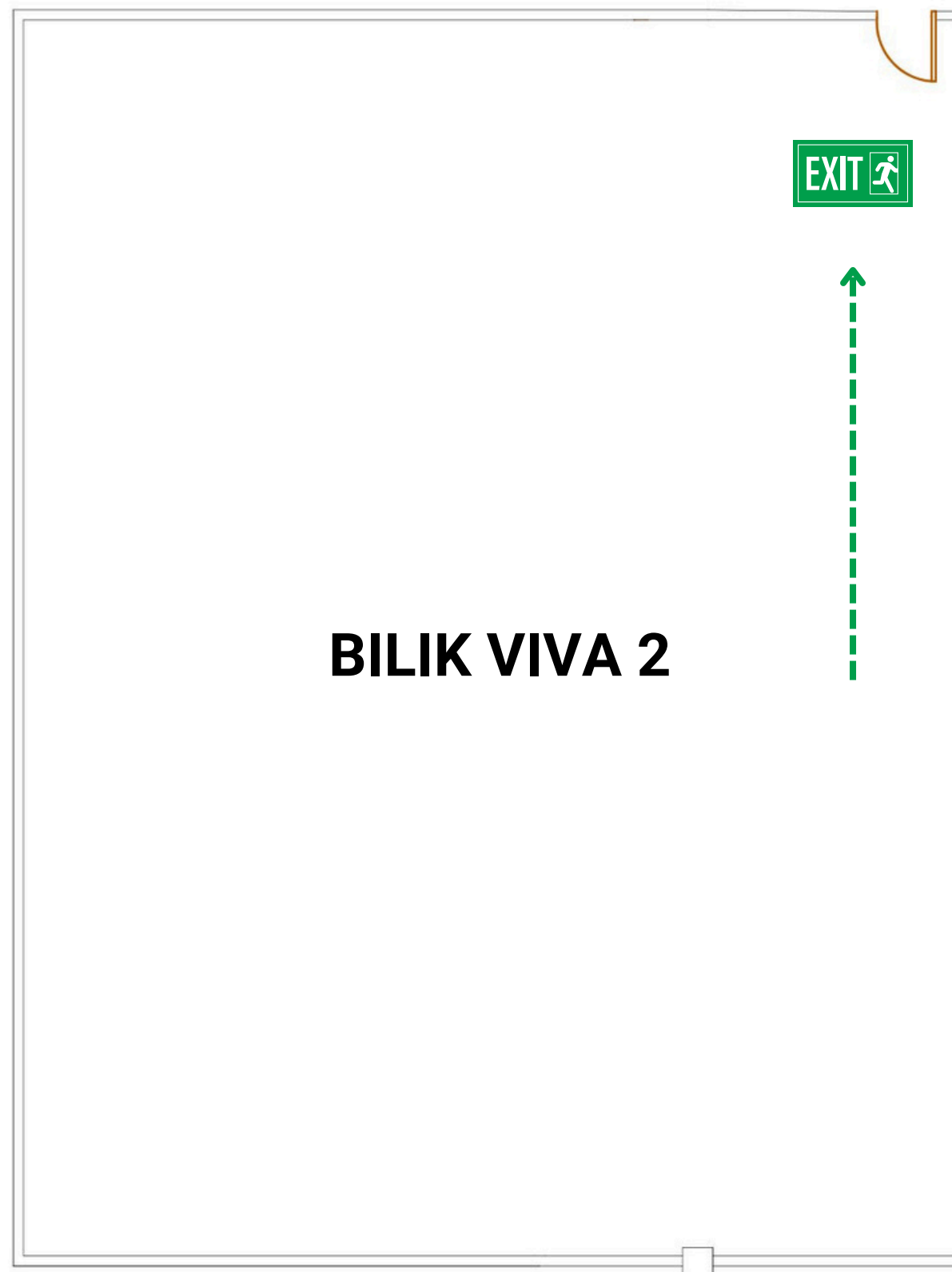
IF THERE IS AN EMERGENCY

IF THERE IS AN EMERGENCY

- Active the building alarm and ER team.
- Evacuate immediately.
- Exit the building using the nearest exit.
- Report to the nearest designated assembly area.
- Do not re-enter until authorized to do so

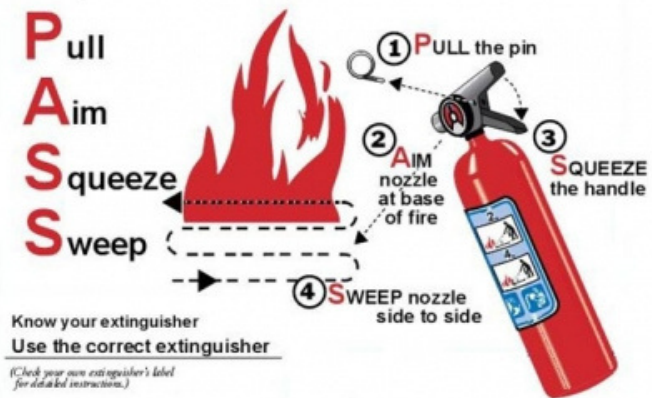
EMERGENCY EVACUATION PLAN

BLOK M46, ARAS 2, BILIK VIVA 2



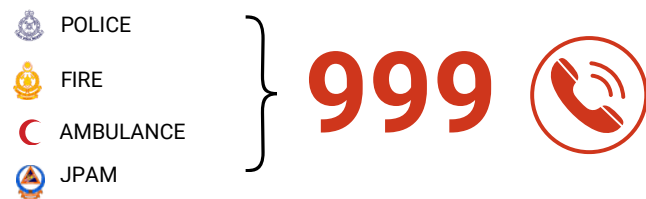
EXTINGUISHER OPERATION

To operate an extinguisher:



EMERGENCY TELEPHONE NUMBERS

GENERAL EMERGENCY NUMBER



INTERNAL EMERGENCY NUMBER

| | |
|-----------------------|---------------------------|
| UTM SECURITY DIVISION | 07-533 3013 / 07-553 0002 |
| UTM HEALTH CENTRE | 07-553 0999 |
| OSHE UTM | 07-553 1886 |

IF THERE IS AN EMERGENCY

IF THERE IS AN EMERGENCY

- Active the building alarm and ER team.
- Evacuate immediately.
- Exit the building using the nearest exit.
- Report to the nearest designated assembly area.
- Do not re-enter until authorized to do so

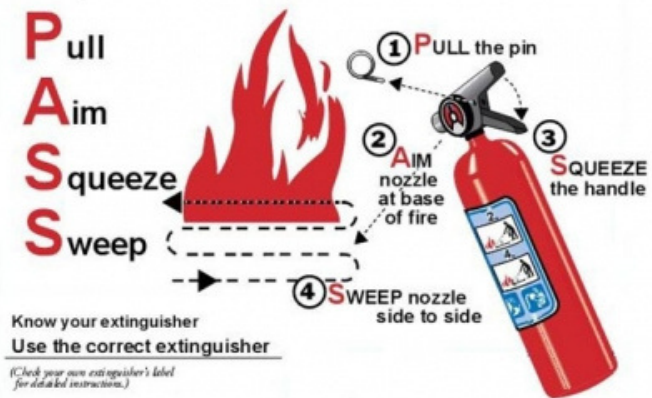
EMERGENCY EVACUATION PLAN

BLOK M46, BILIK MESYUARAT UTAMA



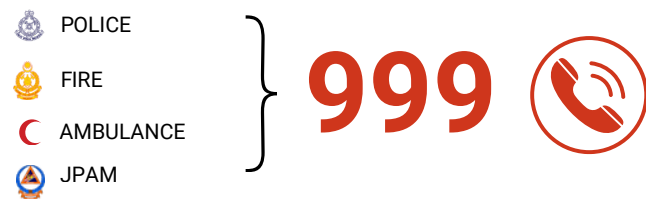
EXTINGUISHER OPERATION

To operate an extinguisher:



EMERGENCY TELEPHONE NUMBERS

GENERAL EMERGENCY NUMBER



INTERNAL EMERGENCY NUMBER

| | |
|-----------------------|---------------------------|
| UTM SECURITY DIVISION | 07-533 3013 / 07-553 0002 |
| UTM HEALTH CENTRE | 07-553 0999 |
| OSHE UTM | 07-553 1886 |

IF THERE IS AN EMERGENCY

IF THERE IS AN EMERGENCY

- Active the building alarm and ER team.
- Evacuate immediately.
- Exit the building using the nearest exit.
- Report to the nearest designated assembly area.
- Do not re-enter until authorized to do so

EMERGENCY EVACUATION PLAN

BLOK M46, BILIK MESYUARAT PROFESIONAL

