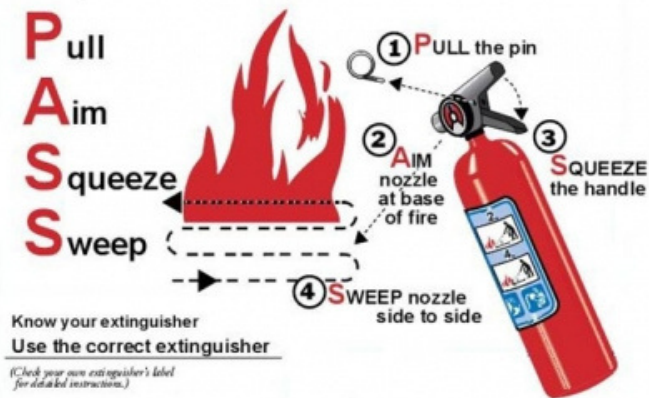


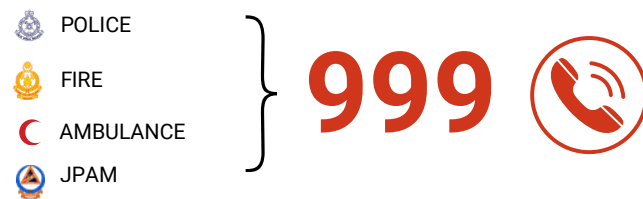
## EXTINGUISHER OPERATION

To operate an extinguisher:



## EMERGENCY TELEPHONE NUMBERS

### GENERAL EMERGENCY NUMBER



### INTERNAL EMERGENCY NUMBER

	UTM SECURITY DIVISION	07-533 3013 / 07-553 0002
	UTM HEALTH CENTRE	07-553 0999
	OSHE UTM	07-553 1886

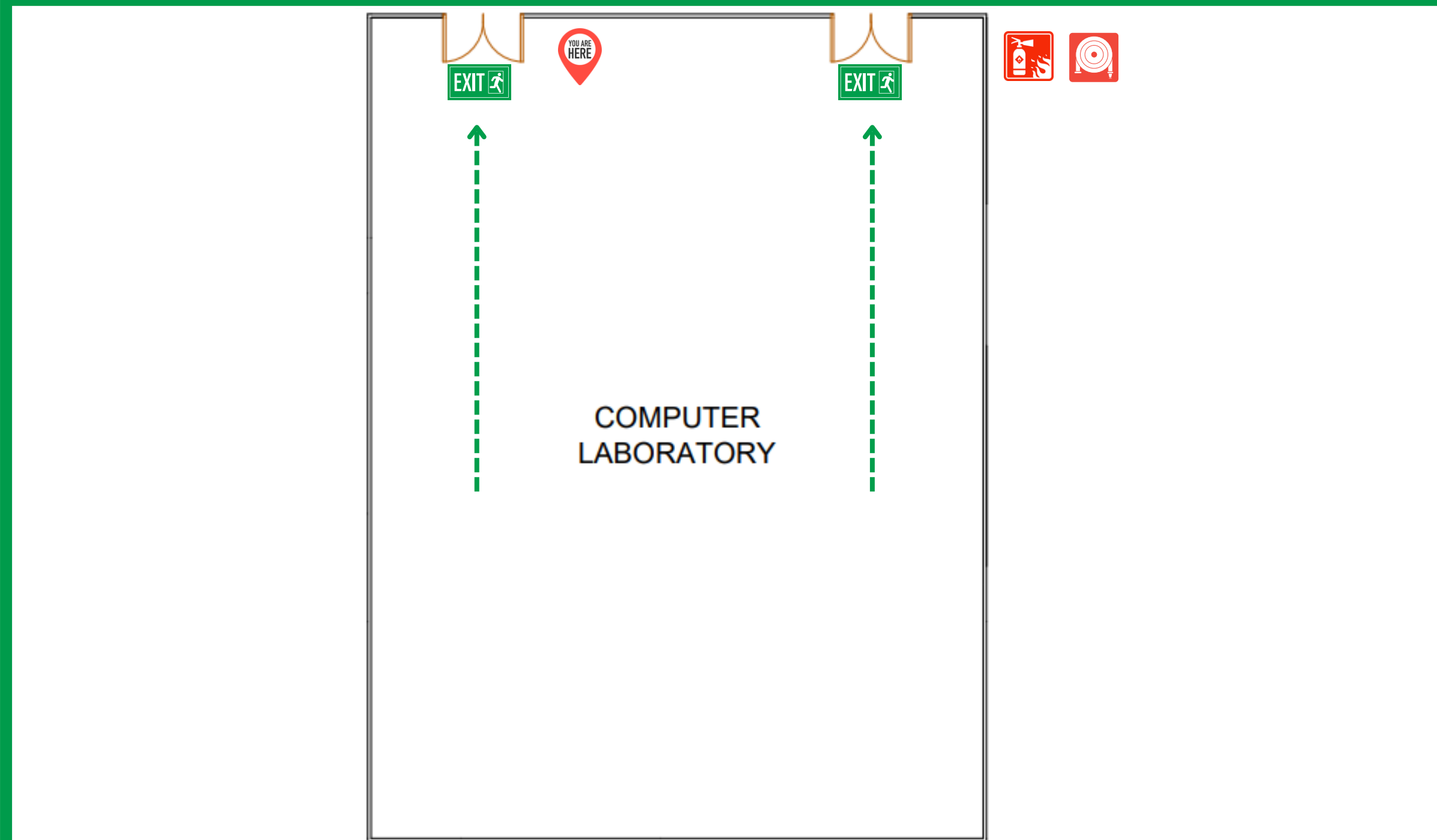
## IF THERE IS AN EMERGENCY

### IF THERE IS AN EMERGENCY

- Active the building alarm and ER team.
- Evacuate immediately.
- Exit the building using the nearest exit.
- Report to the nearest designated assembly area.
- Do not re-enter until authorized to do so

# EMERGENCY EVACUATION PLAN

## COMPUTER LABORATORY, BLOCK M50, FACULTY OF CIVIL ENGINEERING



## LEGENDS



You are here



Emergency exit



Evacuation route



Fire extinguisher



First aid kit



Hose reel