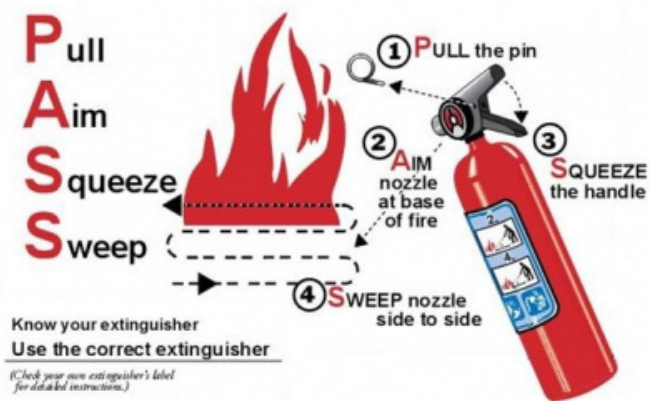


EXTINGUISHER OPERATION

To operate an extinguisher:



EMERGENCY TELEPHONE NUMBERS

GENERAL EMERGENCY NUMBER



INTERNAL EMERGENCY NUMBER

| | | |
|--|-----------------------|---------------------------|
| | UTM SECURITY DIVISION | 07-533 3013 / 07-553 0002 |
| | UTM HEALTH CENTRE | 07-553 0999 |
| | OSHE UTM | 07-553 1886 |

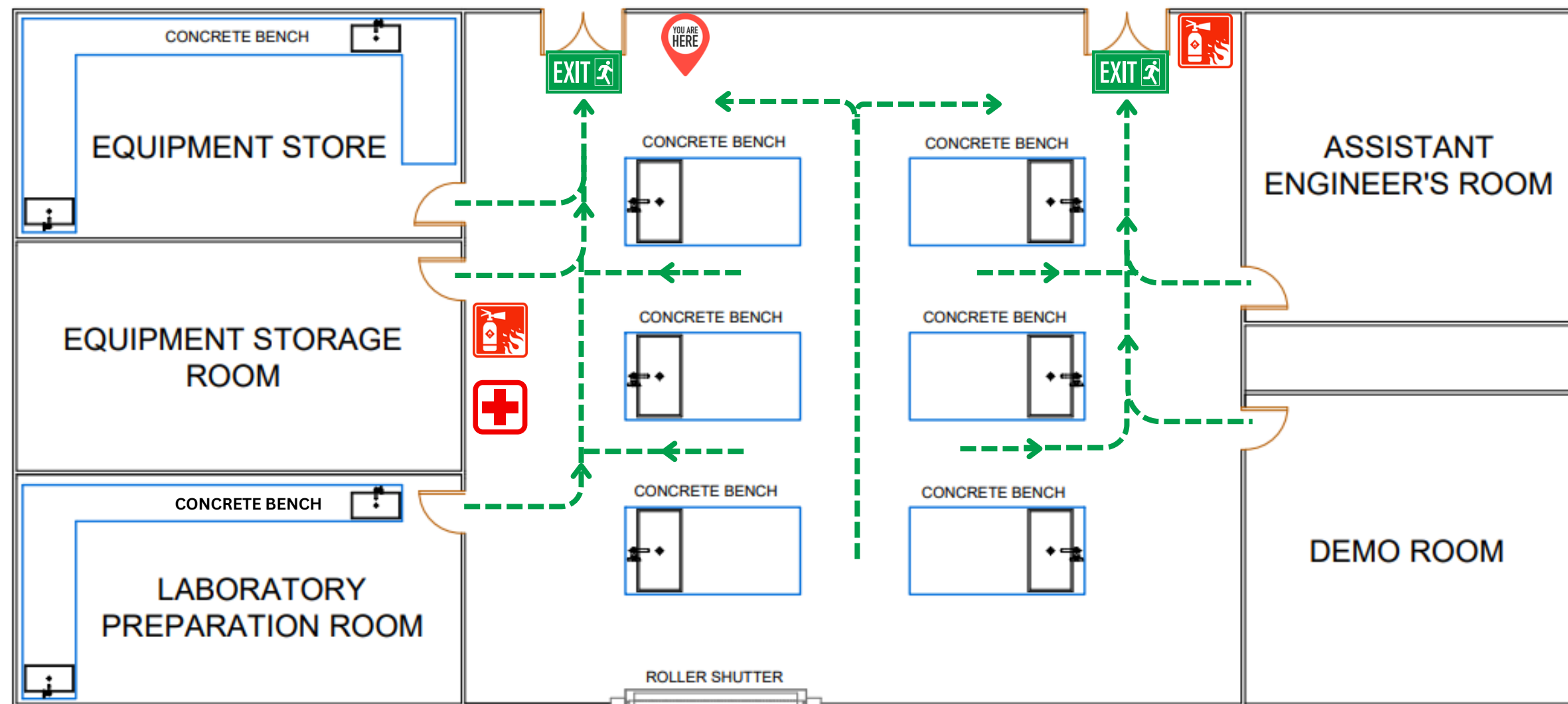
IF THERE IS AN EMERGENCY

IF THERE IS AN EMERGENCY

- Active the building alarm and ER team.
- Evacuate immediately.
- Exit the building using the nearest exit.
- Report to the nearest designated assembly area.
- Do not re-enter until authorized to do so

EMERGENCY EVACUATION PLAN

GEOTHECHNICS LABORATORY, BLOCK M50, FACULTY OF CIVIL ENGINEERING



LEGENDS

