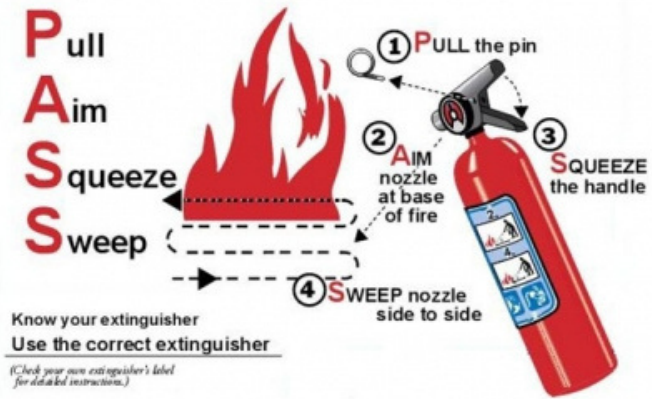


EMERGENCY EVACUATION PLAN

BLOCK M50

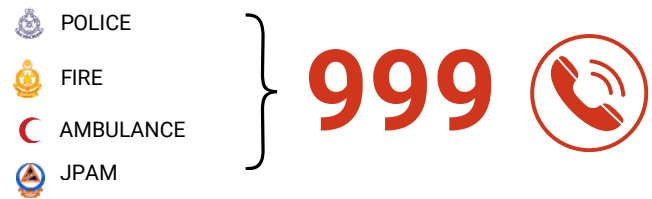
EXTINGUISHER OPERATION

To operate an extinguisher:



EMERGENCY TELEPHONE NUMBERS

GENERAL EMERGENCY NUMBER



INTERNAL EMERGENCY NUMBER

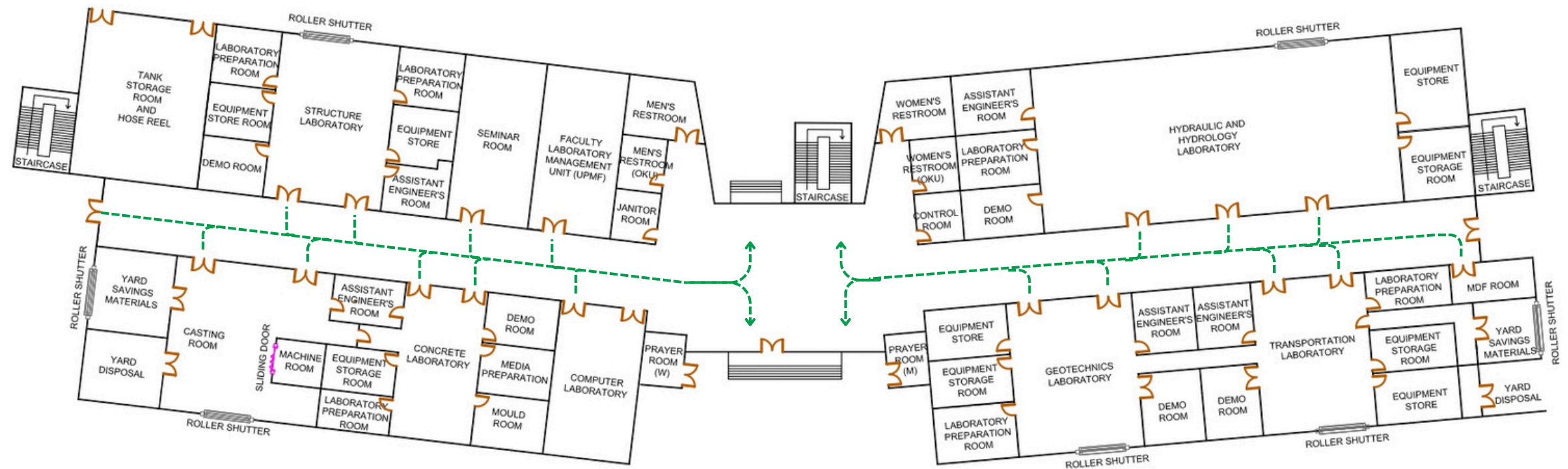
UTM SECURITY DIVISION	07-533 3013
UTM HEALTH CENTRE	07-533 3399
OSHE UTM	07-533 3231

IF THERE IS AN EMERGENCY

IF THERE IS AN EMERGENCY

- Active the building alarm and ER team.
- Evacuate immediately.
- Exit the building using the nearest exit.
- Report to the nearest designated assembly area.
- Do not re-enter until authorized to do so

ASSEMBLY POINT



ASSEMBLY POINT

