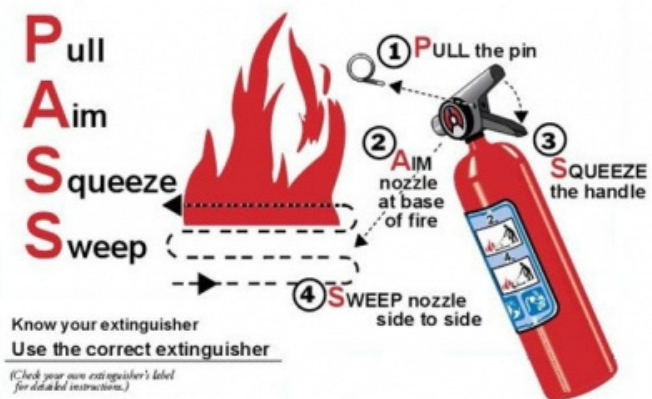


EXTINGUISHER OPERATION

To operate an extinguisher:



EMERGENCY EVACUATION PLAN

BLOCK M46, LEVEL 3

EMERGENCY TELEPHONE NUMBERS

GENERAL EMERGENCY NUMBER



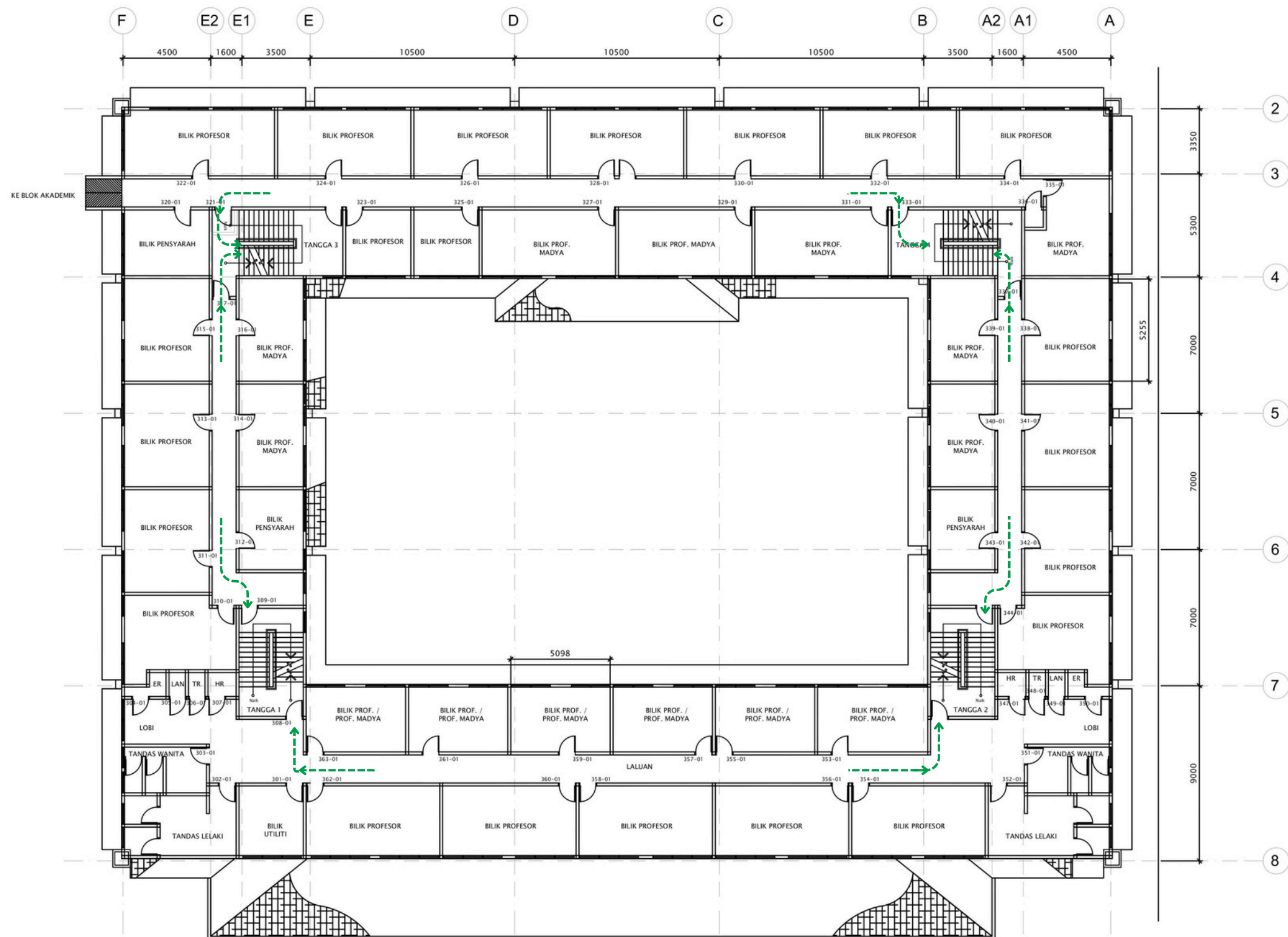
INTERNAL EMERGENCY NUMBER

	UTM SECURITY DIVISION	07-533 3013
	UTM HEALTH CENTRE	07-533 3399
	OSHE UTM	07-533 3231

IF THERE IS AN EMERGENCY

IF THERE IS AN EMERGENCY

- Active the building alarm and ER team.
- Evacuate immediately.
- Exit the building using the nearest exit.
- Report to the nearest designated assembly area.
- Do not re-enter until authorized to do so



PELAN LANTAI ARAS 3