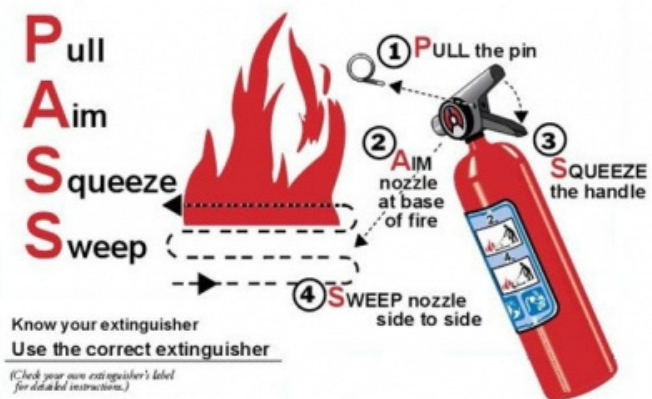


EXTINGUISHER OPERATION

To operate an extinguisher:



EMERGENCY TELEPHONE NUMBERS

GENERAL EMERGENCY NUMBER



INTERNAL EMERGENCY NUMBER

UTM SECURITY DIVISION	07-533 3013 / 07-553 0002
UTM HEALTH CENTRE	07-553 0999
OSHE UTM	07-553 1886

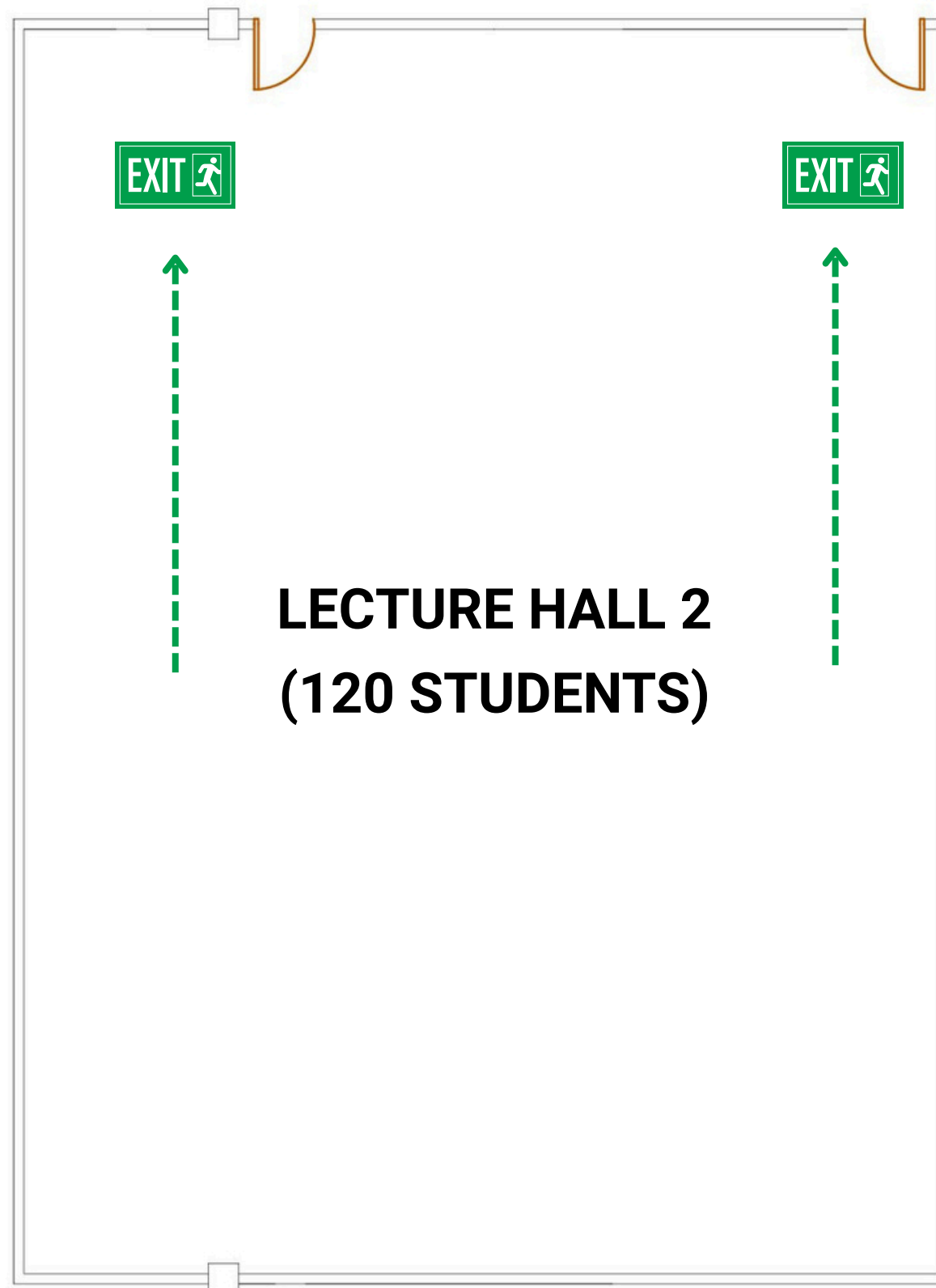
IF THERE IS AN EMERGENCY

IF THERE IS AN EMERGENCY

- Active the building alarm and ER team.
- Evacuate immediately.
- Exit the building using the nearest exit.
- Report to the nearest designated assembly area.
- Do not re-enter until authorized to do so

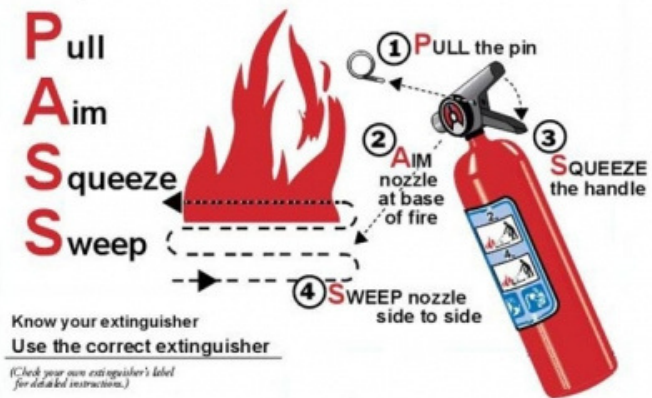
EMERGENCY EVACUATION PLAN

BLOCK M47, LEVEL 2, LECTURE HALL 2



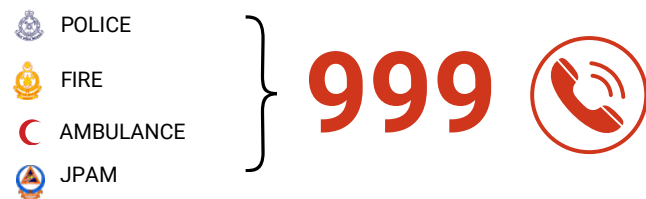
EXTINGUISHER OPERATION

To operate an extinguisher:



EMERGENCY TELEPHONE NUMBERS

GENERAL EMERGENCY NUMBER



INTERNAL EMERGENCY NUMBER

UTM SECURITY DIVISION	07-533 3013 / 07-553 0002
UTM HEALTH CENTRE	07-553 0999
OSHE UTM	07-553 1886

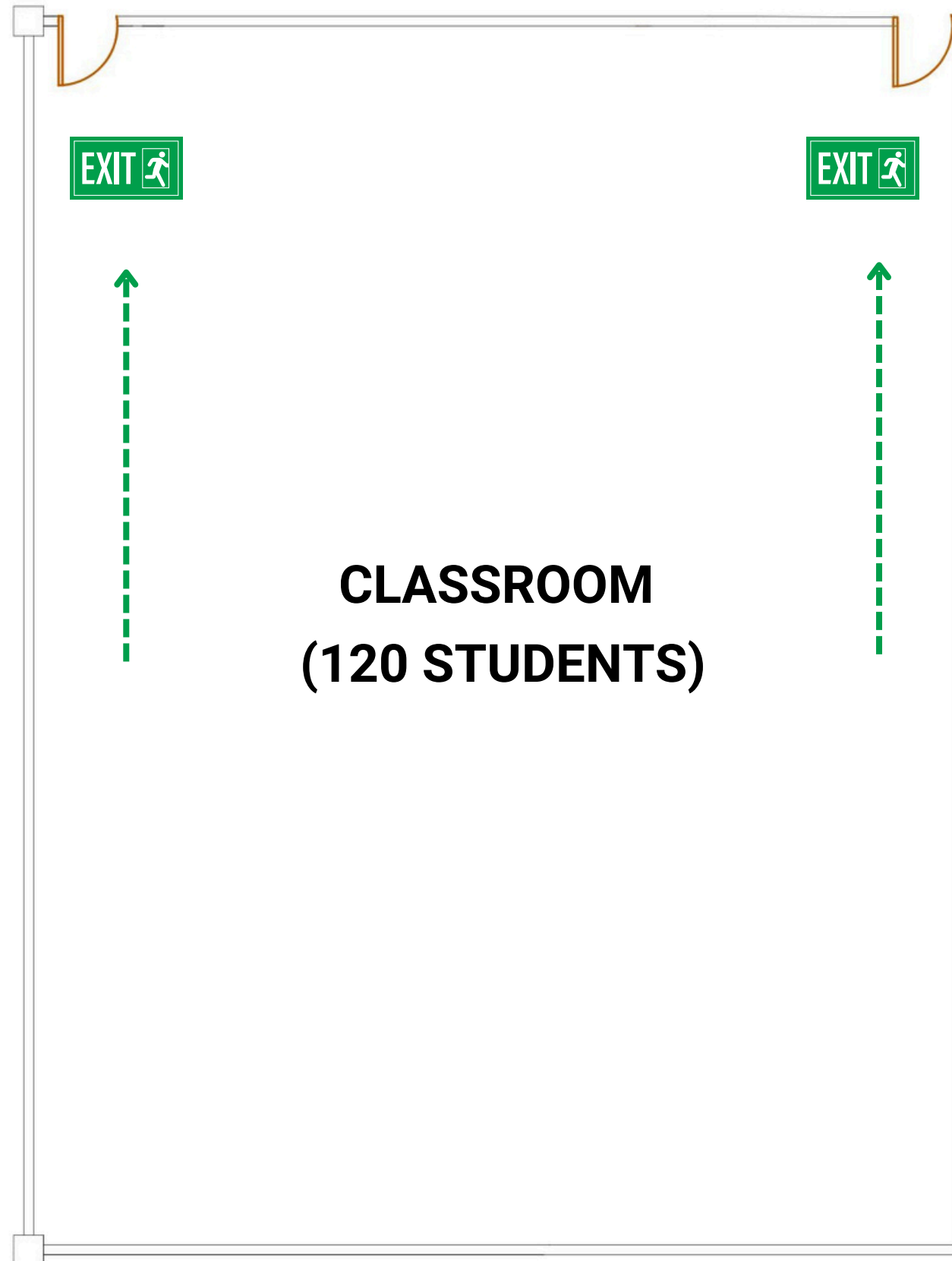
IF THERE IS AN EMERGENCY

IF THERE IS AN EMERGENCY

- Active the building alarm and ER team.
- Evacuate immediately.
- Exit the building using the nearest exit.
- Report to the nearest designated assembly area.
- Do not re-enter until authorized to do so

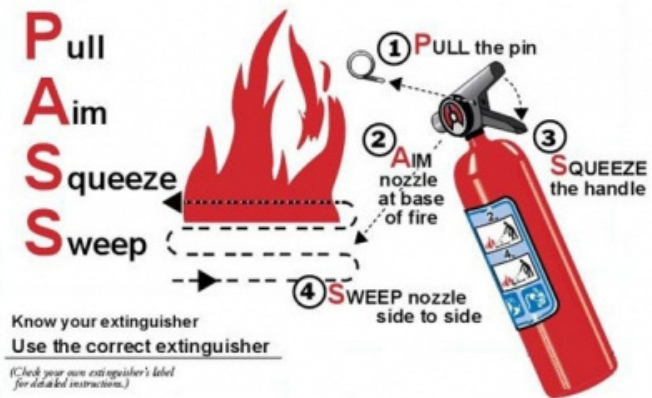
EMERGENCY EVACUATION PLAN

BLOCK M47, LEVEL 2, CLASSROOM



EXTINGUISHER OPERATION

To operate an extinguisher:



EMERGENCY TELEPHONE NUMBERS

GENERAL EMERGENCY NUMBER



INTERNAL EMERGENCY NUMBER

UTM SECURITY DIVISION	07-533 3013 / 07-553 0002
UTM HEALTH CENTRE	07-553 0999
OSHE UTM	07-553 1886

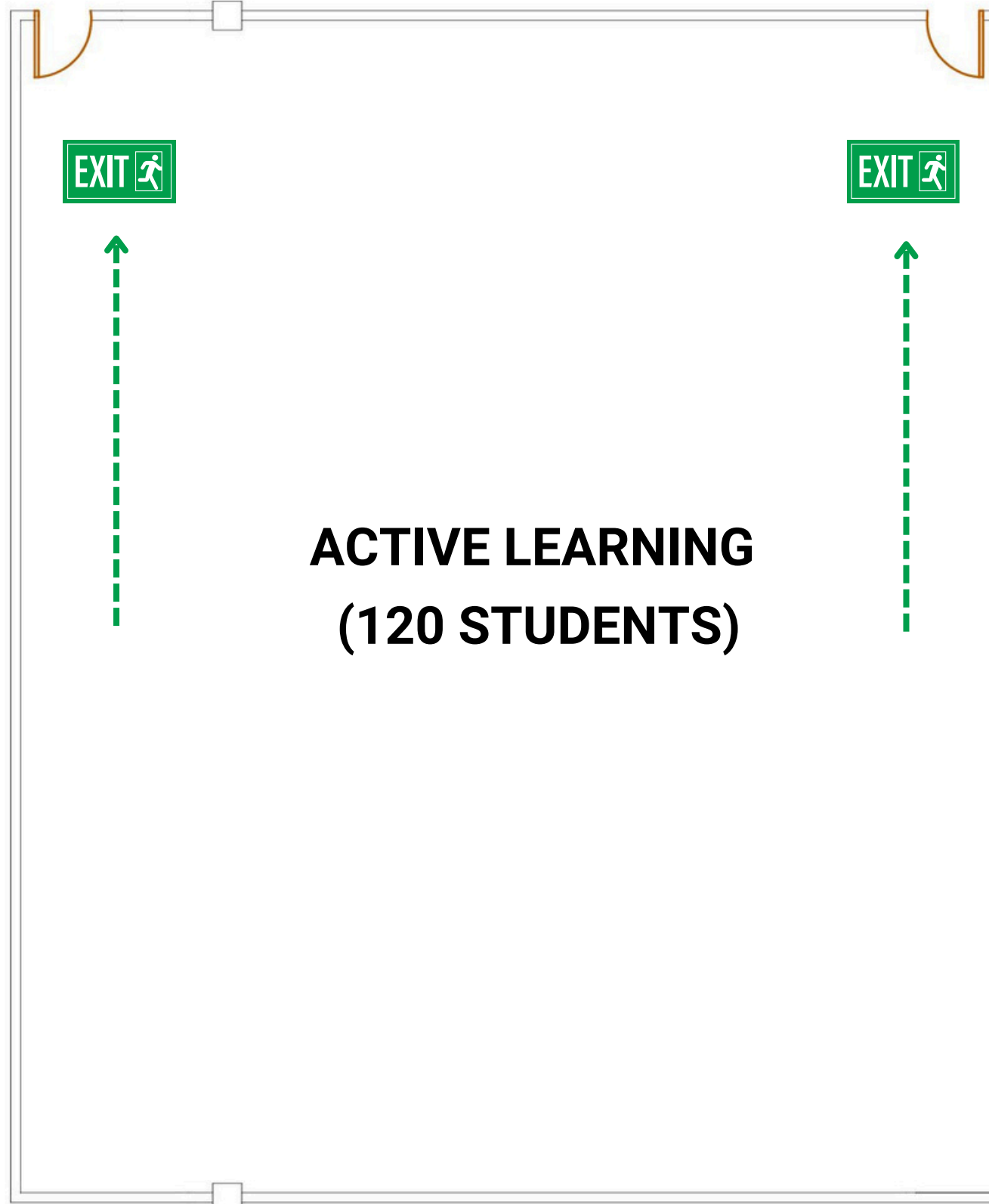
IF THERE IS AN EMERGENCY

IF THERE IS AN EMERGENCY

- Active the building alarm and ER team.
- Evacuate immediately.
- Exit the building using the nearest exit.
- Report to the nearest designated assembly area.
- Do not re-enter until authorized to do so

EMERGENCY EVACUATION PLAN

BLOCK M47, LEVEL 2, ACTIVE LEARNING



EMERGENCY EVACUATION PLAN

BLOCK M47, LEVEL 2, CLASSROOM 7

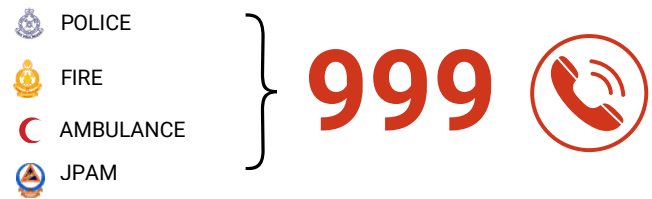
EXTINGUISHER OPERATION

To operate an extinguisher:



EMERGENCY TELEPHONE NUMBERS

GENERAL EMERGENCY NUMBER



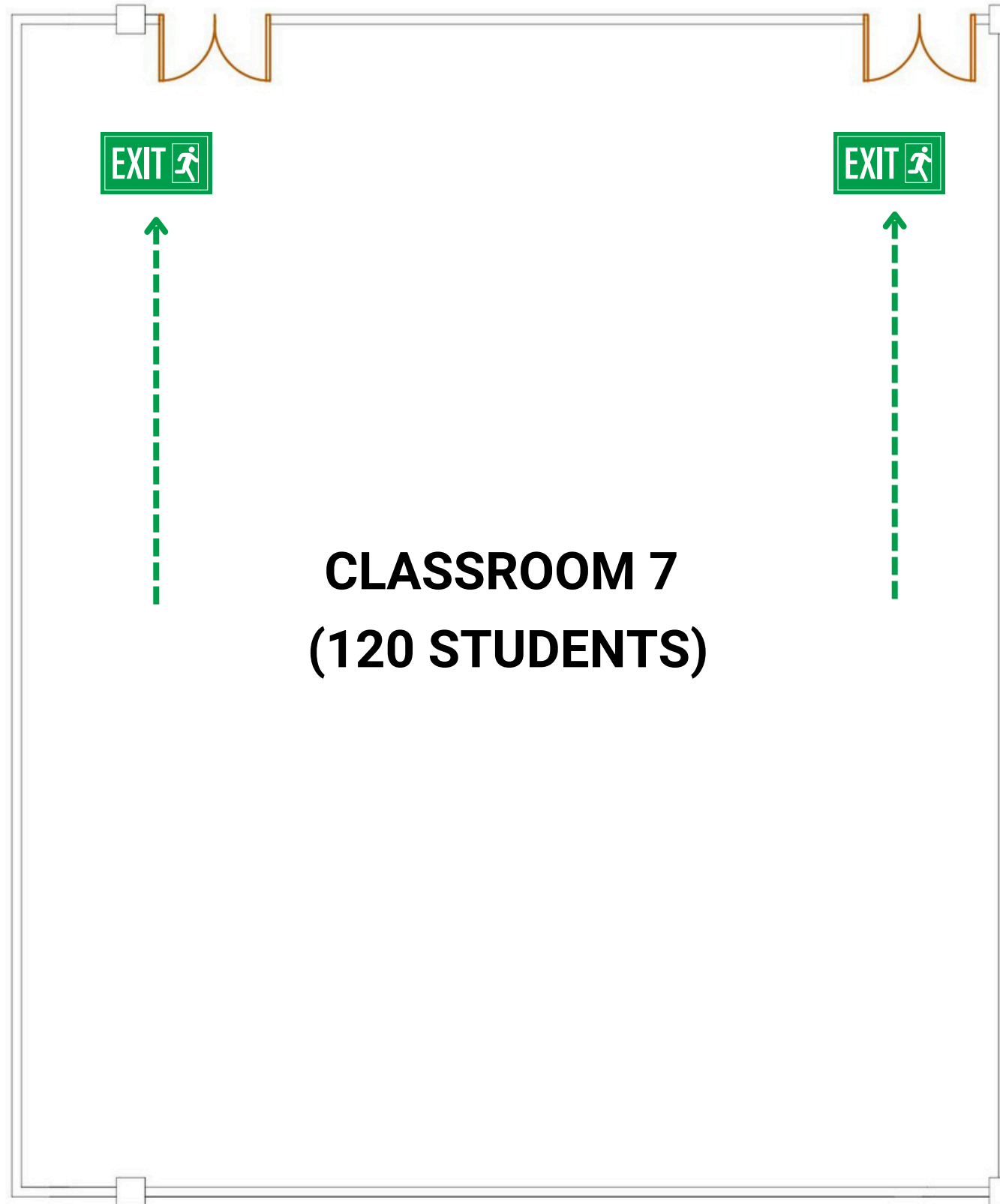
INTERNAL EMERGENCY NUMBER

UTM SECURITY DIVISION	07-533 3013 / 07-553 0002
UTM HEALTH CENTRE	07-553 0999
OSHE UTM	07-553 1886

IF THERE IS AN EMERGENCY

IF THERE IS AN EMERGENCY

- Active the building alarm and ER team.
- Evacuate immediately.
- Exit the building using the nearest exit.
- Report to the nearest designated assembly area.
- Do not re-enter until authorized to do so



EMERGENCY EVACUATION PLAN

BLOCK M47, LEVEL 2, CLASSROOM 6

EXTINGUISHER OPERATION

To operate an extinguisher:



EMERGENCY TELEPHONE NUMBERS

GENERAL EMERGENCY NUMBER



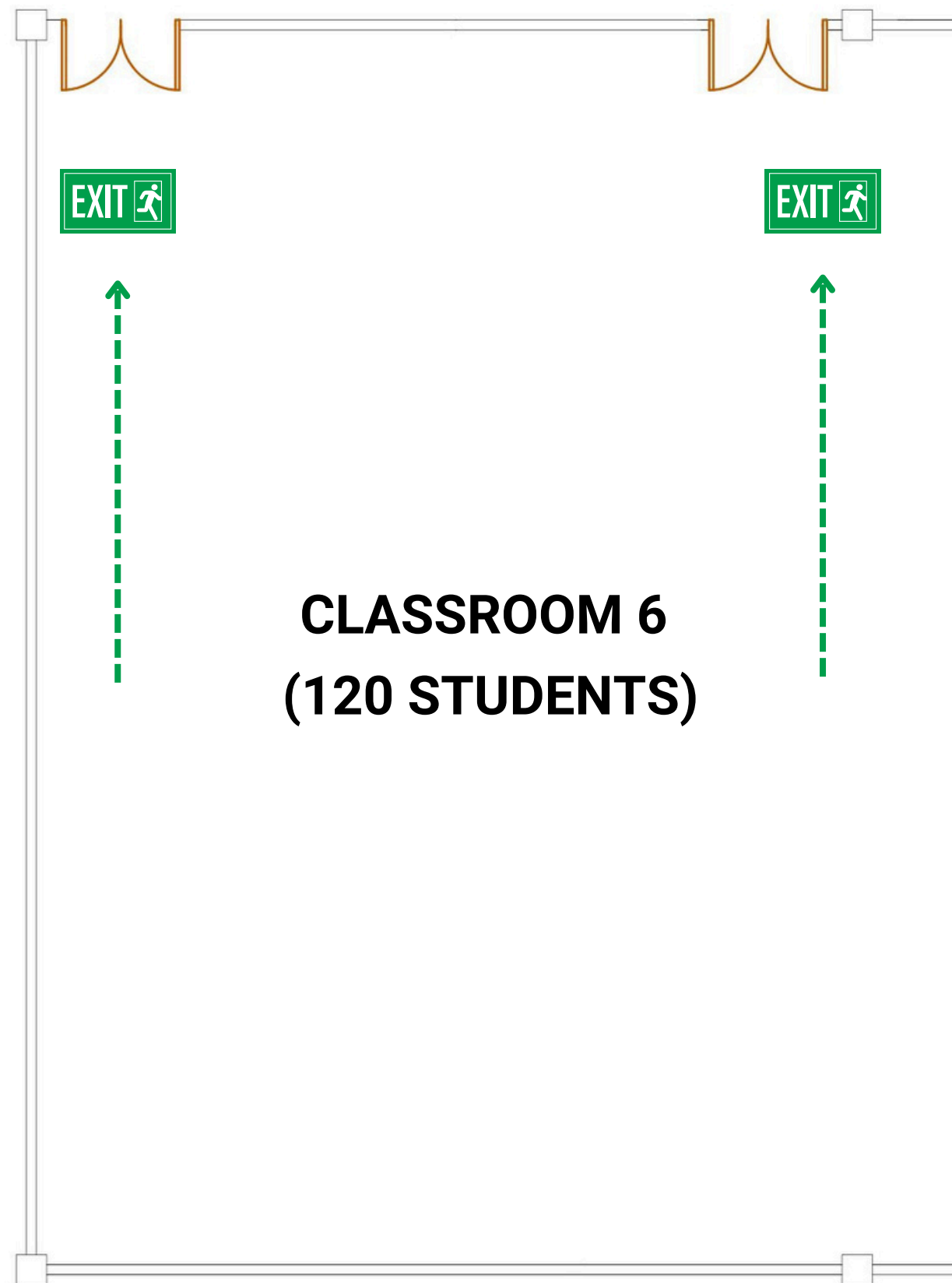
INTERNAL EMERGENCY NUMBER

UTM SECURITY DIVISION	07-533 3013 / 07-553 0002
UTM HEALTH CENTRE	07-553 0999
OSHE UTM	07-553 1886

IF THERE IS AN EMERGENCY

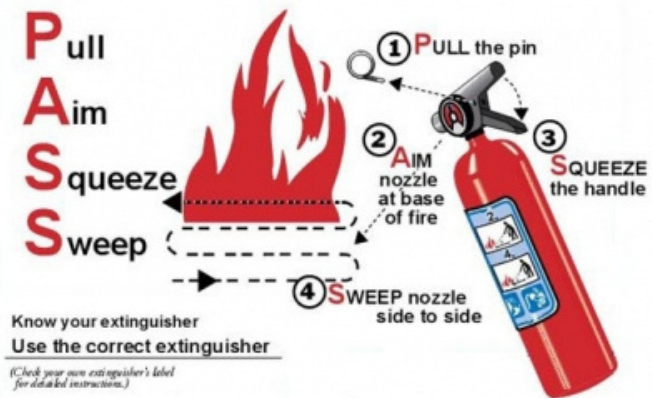
IF THERE IS AN EMERGENCY

- Active the building alarm and ER team.
- Evacuate immediately.
- Exit the building using the nearest exit.
- Report to the nearest designated assembly area.
- Do not re-enter until authorized to do so



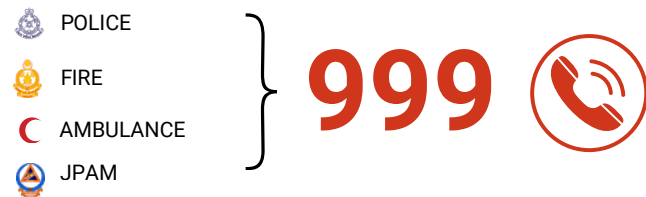
EXTINGUISHER OPERATION

To operate an extinguisher:



EMERGENCY TELEPHONE NUMBERS

GENERAL EMERGENCY NUMBER



INTERNAL EMERGENCY NUMBER

UTM SECURITY DIVISION	07-533 3013 / 07-553 0002
UTM HEALTH CENTRE	07-553 0999
OSHE UTM	07-553 1886

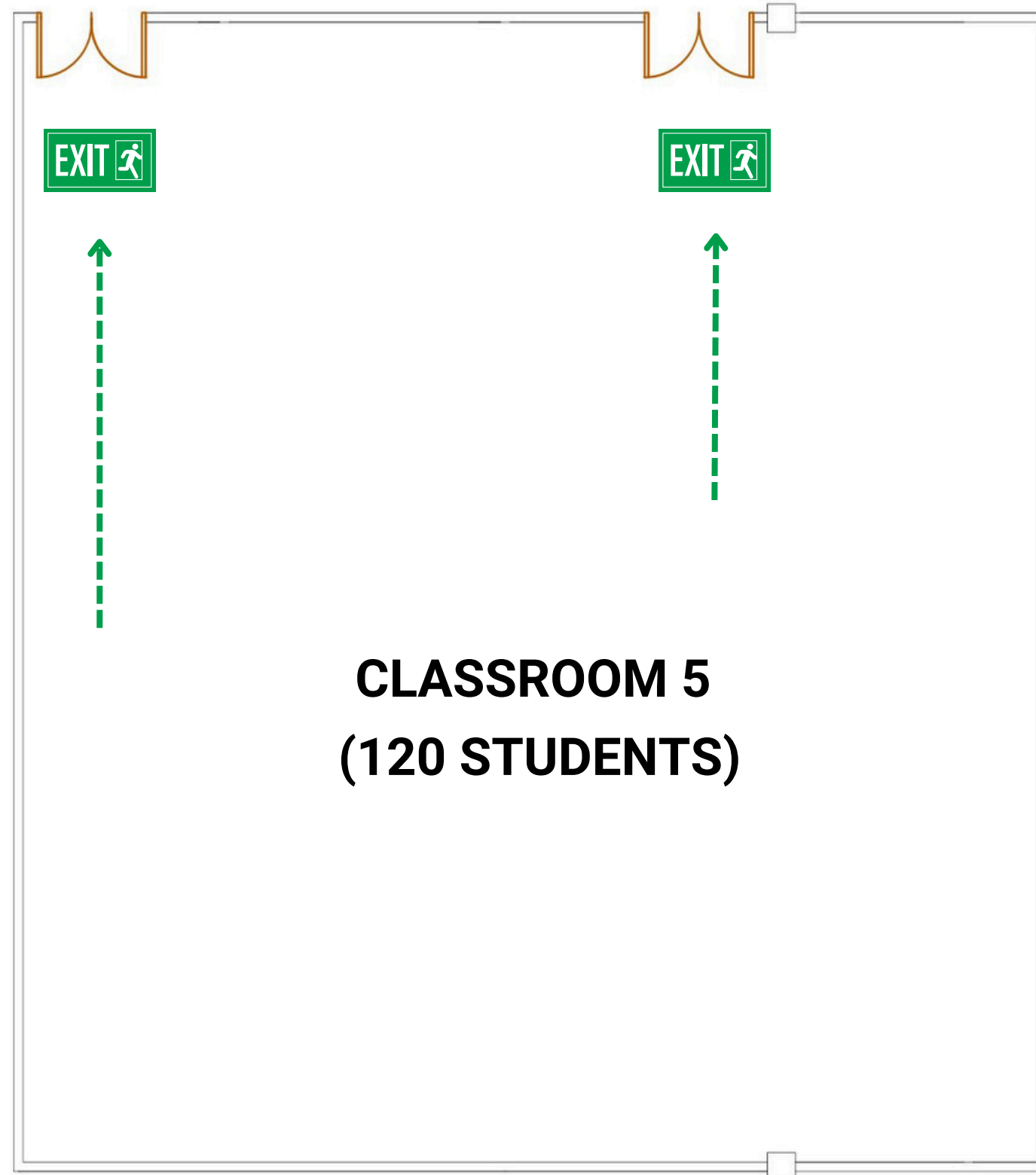
IF THERE IS AN EMERGENCY

IF THERE IS AN EMERGENCY

- Active the building alarm and ER team.
- Evacuate immediately.
- Exit the building using the nearest exit.
- Report to the nearest designated assembly area.
- Do not re-enter until authorized to do so

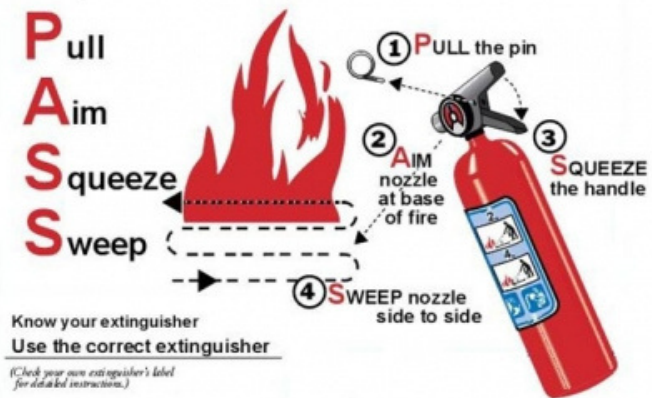
EMERGENCY EVACUATION PLAN

BLOCK M47, LEVEL 2, CLASSROOM 5



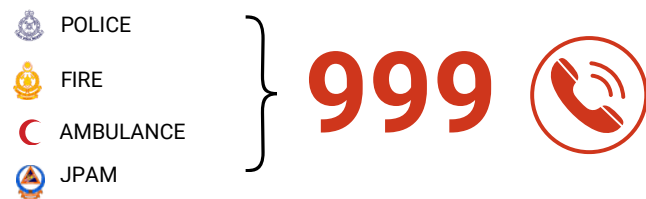
EXTINGUISHER OPERATION

To operate an extinguisher:



EMERGENCY TELEPHONE NUMBERS

GENERAL EMERGENCY NUMBER



INTERNAL EMERGENCY NUMBER

UTM SECURITY DIVISION	07-533 3013 / 07-553 0002
UTM HEALTH CENTRE	07-553 0999
OSHE UTM	07-553 1886

IF THERE IS AN EMERGENCY

IF THERE IS AN EMERGENCY

- Active the building alarm and ER team.
- Evacuate immediately.
- Exit the building using the nearest exit.
- Report to the nearest designated assembly area.
- Do not re-enter until authorized to do so

EMERGENCY EVACUATION PLAN

BLOCK M47, LEVEL 2, CLASSROOM 4

