

UNIVERSITI TEKNOLOGI MALAYSIA

DECLARATION OF THESIS / UNDERGRADUATE PROJECT PAPER AND
COPYRIGHT

Author's full name : MOHAMMAD SADEQ ASADI
 Date of birth : 22 SEPTEMBER 1986
 Title : HYDRODYNAMIC AND SEDIMENT TRANSPORT
MODELLING IN THE PADAS ESTUARY
 Academic Session : 2010 / 2011

I declare that this thesis is classified as :

- CONFIDENTIAL** (Contains confidential information under the Official Secret Act 1972)*
- RESTRICTED** (Contains restricted information as specified by the organization where research was done)*
- OPEN ACCESS** I agree that my thesis to be published as online open access (full text)

I acknowledged that Universiti Teknologi Malaysia reserves the right as follows:

1. The thesis is the property of Universiti Teknologi Malaysia.
2. The Library of Universiti Teknologi Malaysia has the right to make copies for the purpose of research only.
3. The Library has the right to make copies of the thesis for academic exchange.

Certified by :


SIGNATURE


SIGNATURE OF
SUPERVISOR

Professor Hadibah Ismail
Professor, COEI
UTM International Campus

J14971196
(NEW IC NO. /PASSPORT NO.)

PROFESSOR HADIBAH BINTI ISMAIL
NAME OF SUPERVISOR


DATE : 11 MAY 2011

DATE : 11 MAY 2011

NOTES : *If the thesis is CONFIDENTIAL or RESTRICTED, please attach with the letter from the organization with period and reasons for confidentiality or restriction.

I hereby declare that I have read this project report and in my opinion this project report is sufficient in terms of scope and quality for the award of the degree of Master of Engineering (Civil – Hydraulics and Hydrology).

Professor Hadibah Ismail
Professor, COEI
UTM International Campus

Signature : 
Name : **PROFESSOR HADIBAH BINTI ISMAIL**
Date : **11 MAY 2011**

HYDRODYNAMIC AND SEDIMENT TRANSPORT MODELLING IN THE
PADAS ESTUARY

MOHAMMAD SADEQ ASADI

A project report submitted in partial fulfillment of the requirements for the award of
the degree of Master of Engineering (Civil – Hydraulics and Hydrology)

Faculty of Civil Engineering
Universiti Teknologi Malaysia

MAY 2011

I declare that this thesis entitled “Hydrodynamic and Sediment Transport Modeling in the Padas Estuary” is the result of my own research except as cited in the references. The thesis has not been accepted for any degree and is not concurrently submitted in candidature of any other degree.

Signature :

Name : **MOHAMMAD SADEQ ASADI**

Date : **11 MAY 2011**

ACKNOWLEDGEMENT

Praises to Allah SWT, the Most gracious and Most Merciful, Who has created the mankind with knowledge, wisdom and power. Being the best creation of Allah, one still has to depend on others for many aspects directly and indirectly. In preparing this dissertation, the author was indebted to many personnel, academics and practitioners. They have contributed towards my understanding and thoughts. Therefore, I would like to thank all those who gave me the possibility to complete this dissertation.

First and foremost, I would like to express my sincere gratitude to my supervisor, Professor Hadibah Binti Ismail who has supported me with her guidance, encouragement, patience and knowledge throughout the accomplishment of this thesis. My gratitude also been extended to all personnel of the Coastal and Offshore Engineering Institute (COEI) for their support, cooperation and constructive criticisms during the research period.

ABSTRACT

The quantification and monitoring of sediment dynamics in estuaries has received plenty of attention in recent years due to both economic and environmental interest. Accurate prediction of sediment transport in the Padas Estuary is essential for optimum location of jetty and navigation channel. A numerical model has been applied to predict the morphodynamic evolution in this area. The hydrodynamic and sediment transport in the Padas estuary was estimated by means of a two-dimensional hydrodynamic model (TELEMAC) coupled to a morphodynamic model (SISYPHE). Hydrodynamic characteristics calculated with the numerical model were compared to field measured data. The model calibration was achieved by comparing speed and direction at several stations in the sea, and comparing free surface water elevation (tidal) along the river. Model results and field data were generally in good agreement. The differences between model results and observed data were from 1.95% to 23% for current speeds, 5% to 15% for current directions and 4.6% to 14.5% for water level. Based on the results of hydrodynamic and morphodynamic models the following outcome have been achieved. The maximum water surface elevation is equal to 2.8 m and this occurred during flood tide. On the other hand, the minimum water surface elevation (1.5 m) occurred during ebb tide. It is observed that currents during ebb tide are stronger than those during flood tide and the deposition is a dominant phenomenon throughout the Padas estuary whereas erosion has been observed to occur only in a few places. The data resulting from this study could be used to determine the optimum location for jetty and navigation channel.

ABSTRAK

Pengaggaran dan pemantauan pergerakan sedimen di muara telah menerima banyak perhatian sejak akhir-akhir ini kerana kepentingan ekonomi dan persekitaran. Ramalan yang tepat mengenai pengangkutan sedimen di Muara Sg.Padas adalah penting untuk menentukan lokasi optimum jeti dan laluan kapal dikawasan itu. Di dalam kajian ini, model berangka telah dibina untuk meramalkan kadar pemendapan dengan menggunakan model hidrodinamik dua-dimensi (TELEMAC-2D) digabungkan dengan model pemendapan (SISYPHE). Ciri-ciri hidrodinamik daripada model berangka ini telah dibandingkan dengan data yang diambil di kawasan kajian. Kalibrasi model dicapai dengan membandingkan kelajuan dan arah arus di beberapa stesen di dalam kawasan kajian, dan membandingkan aras permukaan air (pasangsurut) di 2 buah lokasi. Keputusan model pada umumnya hampir kepada data lapangan. Perbezaan antara hasil model dan data yang diperolehi adalah antara 1.95% hingga 23% untuk kelajuan arus, 5% hingga 15% untuk arah arus dan 4.6% hingga 14.5% untuk aras permukaan air. Berdasarkan hasil model hidrodinamik dan pemendapan ini, keputusan berikut telah dicapai: Aras permukaan air maksimum adalah setinggi 2.8 m dan ini terjadi pada saat air pasang. Manakala, aras permukaan air minimum (1.5 m) terjadi pada saat air surut. Telah diperhatikan juga bahawa arus semasa air surut lebih kuat daripada arus semasa air pasang dan pemendapan adalah satu fenomena yang dominan di Muara Padas sedangkan hakisan hanya berlaku di beberapa tempat sahaja. Seterusnya, data yang dihasilkan daripada kajian ini boleh digunakan untuk menentukan lokasi optimum jeti dan laluan kapal di kawasan Muara Padas ini.

TABLE OF CONTENTS

TITLE	PAGE
TITLE PAGE	i
DECLARATION	ii
ACKNOWLEDGEMENT	iii
ABSTRACT	iv
ABSTRAK	v
TABLE OF CONTENTS	vi
LIST OF FIGURES	xi
LIST OF TABLES	xiv
LIST OF APPENDICES	xv

1	INTRODUCTION	1
1.1	General	1
1.2	Research Background	3
1.3	Study Area	4
1.4	Objectives of Study	6
1.5	Scope of Study	6
1.6	Significance of Study	7
2	THEORETICAL BACKGROUND	8
2.1	Introduction	8
2.2	Basics of Estuarine Hydrodynamics	9
2.3	Basic Physical Laws	11
2.4	Hydrodynamic Processes	12
2.4.1	Shallow Water Equations	12
2.4.2	Astronomical Tides	13
2.4.3	Bottom Friction	14
2.4.4	Coriolis Friction	15
2.5	Sediment Transport in Estuaries	16
2.5.1	Sediment Transport Process	17
2.5.2	Modes of Transport	19
2.5.3	Classification of Grain Size	21
2.5.4	Description of Threshold of Movement	22
2.5.5	Bed Evolution	23
2.5.6	Estimation of Bed Shear Stress	23

	2.5.7	Sediment Transport by Currents	24
	2.6	Numerical Modelling	25
	2.6.1	Finite Element, Finite Volume and Finite Difference Method	25
	2.6.2	General Information for TELEMAC and its Application	28
	2.6.3	The Hydrodynamic Model TELEMAC-2D	28
	2.6.4	The Morphodynamic model SISYPHE	29
3		METHODOLOGY	30
	3.1	Introduction	30
	3.2	Model Domain for the Hydrodynamics of Padas Estuary	30
	3.3	Application of MATTISE	32
	3.3.1	General Concept of MATTISE Software	32
	3.3.2	Boundary Conditions	34
	3.3.3	Input and Output of MATTISE	34
	3.4	Application of TELEMAC	35
	3.4.1	General Concept of TELEMAC 2-D Software	35
	3.4.2	Input and Output of TELEMAC 2-D	36
	3.5	Application of SISYPHE	38
	3.5.1	General Concept of SISYPHE 2-D Software	38
	3.5.2	Coupling Hydrodynamics and Morphodynamics model	40
	3.5.3	Input and Output of SISYPHE	41

3.5.4	Steering File	42
3.5.5	Sand Transport Formula	42
4	DATA ANALYSIS AND RESULTS	44
4.1	Introduction	44
4.2	Hydrodynamic Model Calibration	47
4.2.1	The Calibration Curve for Speed and Direction at Station CM1	48
4.2.2	The Calibration Curve for Speed and Direction at Station CM2	50
4.2.3	The Calibration Curve for Speed and Direction at Station CM3	51
4.2.4	The Calibration Curve for Water Level at Station TG1	53
4.2.5	The Calibration Curve for Water Level at Station TG2	54
4.2.6	Summary of Calibration results	55
4.3	Simulation Runs for the Hydrodynamic Model	57
4.3.1	Water Surface Elevation	57
4.3.2	Current Vectors	60
4.3.3	Speeds and Directions of Currents at two stations	63
4.4	Morphodynamic Model Simulation	68
4.4.1	Bed Evolution in the Padas Estuary	69
4.4.2	Bed Evolution at Two Points	72
4.4.3	Bed Evolution across the River	74

4.5	Appraisal of the Modelling Results	77
5	CONCLUSIONS	78
5.1	Introduction	78
5.2	Recommendations	79
5.3	Conclusions	80
	REFERENCES	81
	APPENDICES A – E	85-110

LIST OF FIGURES

FIGURE NO.	TITLE	PAGE
1.1	Map of Malaysia Coastline	2
1.2	Study Area Location	5
1.3	Location of The Sungai Padas Estuary	5
2.1	Sediment Transport Process	18
2.2	Bed Load and Suspended Load Transport	19
2.3	Fluid Forces Causing Sediment Movement	22
3.1	Model Domain for the Hydrodynamic Modelling in Padas Estuary	31
3.2	The Domain of Previous Hydrodynamic Model	32
3.3	Model Mesh Discretization for the Existing Mesh	33
3.4	Bed Bathymetry For Existing Condition	37
3.5	The Sequence of TELEMAC Module Simulation	39
3.6	SISYPHE Model Computing Environment	41
4.1	The Location of Points in Previous Hydrodynamic Model	45
4.2	Comparison between Free Surface Water Elevations along New Boundary	46
4.3	Location of Points along the New Tidal Boundary	46

4.4	Position of Current Meters and Tidal Stations Used For Model Calibration	47
4.5	Calibration Curve of Current Speed at CM1	49
4.6	Calibration Curve of Current Direction at Station CM1	49
4.7	Calibration Curve of Current Speed at CM2	50
4.8	Calibration Curve of Current Direction at Station CM2	51
4.9	Calibration Curve of Current Speed at CM3	52
4.10	Calibration Curve of Current Direction at Station CM3	52
4.11	Calibration Curve of Water Level at Station TG1	53
4.12	Calibration Curve of Water Level at Station TG2	54
4.13	Free Surface (Water Level) during Flood Tide	57
4.14	Close-Up of Free Surface during Flood Tide along the River	58
4.15	Free Surface (Water Level) during Ebb Tide	58
4.16	Close-Up of Free Surface during Ebb Tide along the River	59
4.17	Current Vectors during Flood Tide	60
4.18	Close-Up of Current Vectors during Flood Tide inside the River	61
4.19	Current Vectors during Ebb Tide	61
4.20	Close-Up of Current Vector During Ebb Tide Inside The River	62
4.21	Location of Two Sections in the Domain	63
4.22	Comparison between Speeds in Section A-A	64
4.23	Comparison between Directions in Section A-A	65

4.24	Comparison between Speeds in Section B-B	66
4.25	Comparison between Directions in Section B-B	67
4.26	The Output of First Run for Bed Evolution	68
4.27	The Output of Second Run for Bed Evolution	68
4.28	The Output of Third Run for Bed Evolution	68
4.29	The Output of Fourth Run for Bed Evolution	68
4.30	Bed Evolution in the Padas Estuary, First Run after Stability	69
4.31	Bed Evolution in the Padas Estuary, Second Run after Stability	70
4.32	Bed Evolution in the Padas Estuary, Third Run after Stability	70
4.33	Bed Evolution in the Padas Estuary, Fourth Run after Stability	71
4.34	The Locations of Two Points in Morphodynamic Model	72
4.35	Bed Evolution at Point A	73
4.36	Bed Evolution at Point B	73
4.37	Location of Three Sections in the Domain	74
4.38	Bed Evolution across the River at Section A-A	75
4.39	Bed Evolution across the River at Section B-B	76
4.40	Bed Evolution across the River at Section C-C	76
5.1	Proposed Location of Jetty and Navigation Channel	79

LIST OF TABLES

TABLE NO.	TITLE	PAGE
2.1	Sediment Particle Classification	21
3.1	Validity Range of The Sand Transport Formula Programmed in SISYPHE	43
4.1	The Difference between Observed and Model Current Speed	55
4.2	The Difference between Observed and Model Current direction	55
4.3	The Difference between Observed and Model Water Level	56

LIST OF APPENDICES

APPENDIX	TITLE	PAGE
A	The Boundary Condition File	85
B	The Steering File for TELEMAC	89
C	The Liquid Boundary File	91
D	The Steering File for SISYPHE	96
E	Data for each Point along the New Boundary	99

CHAPTER 1

INTRODUCTION

1.1 General

The world's coastline has been engineered for many centuries, initially for the development of ports and maritime trade or fishing harbors to support local communities, for example, the Port of A-ur built on the Nile prior to 3000_{BC} and nearby the open coast the Port of Pharos around 2000_{BC}.

Malaysia is a coastal nation with a coastline of 4809 km and rich in biodiversity and natural resources. The country is divided into two landmasses by the South China Sea. Peninsular Malaysia is located to the west of South China Sea with a coastline of 2031 km and the other part is East Malaysia, consisting of Sabah and Sarawak. The Federal Territory of Labuan is located in the northwestern coast of Borneo island. Sabah has a coastline of 1743 km while Sarawak has a coastline of 1035 km. A map of the Malaysia coastline is shown in Figure 1.1.

Malaysia being a maritime nation has a need to develop its coastal zones. One of the results of this development is the planning for new ports and improves the infrastructure of existing ports.

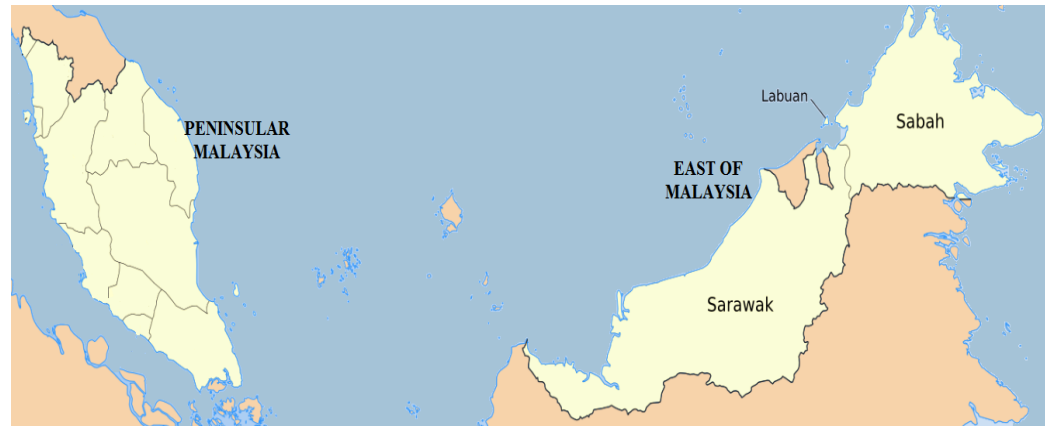


Figure 1.1: Map of Malaysia Coastline

Summary of coastline length Peninsular = 2031 km Sabah and Sarawak = 2778 km
--

This study is carried out to assist the Malaysia Marine Department to identify the best location of a new landing facility and navigation channel in the Padas estuary, Sabah. A two dimensional numerical model has been applied to simulate the hydrodynamic and sediment transport in the Padas estuary in the south western coast of Sabah.

1.2 Research Background

An old timber jetty was found to be abandoned 20 years ago due to river mouth sedimentation which restricts navigation traffic from the inland area to the sea. There is a need to construct a new jetty in the area to transport building materials in order to support development in the inland area along Sungai Padas especially the area to the south of the river bank. Therefore it is important to understand the behaviour of the hydrodynamics and morphodynamics of the Padas estuary. By considering the sediment and hydrodynamic characteristics the optimum location for the proposed landing facility and navigational channel could be determined.

Sediment transport plays a vital role in many aspects of river, coastal and offshore engineering. The dynamics of sediment influences the construction of infrastructures (bridges, dams), embankments, harbours and approach channels, power stations, the integrity of beaches, dredging and dumping activities, the safety of offshore platforms and pipelines, and many other activities. Moreover, sediment dynamics have a large impact on biodiversity. Despite its importance, the study and prediction of sediment dynamics still remains a challenging discipline where the margins of uncertainties are still very high. The difficulty of this discipline arises from many different reasons.

Sediment characteristics are often scarcely known and their spatial variability too high to be correctly represented by a limited number of variables. The moving agents of sediments (currents and waves) besides varying in time and space interact with each other and with the sediments at the bottom. This makes the relationship between flow properties and sediment dynamics not straightforward, even for very simple situations.

Predicting the rate of sedimentation in a domain can be difficult and inexact due to the complexity of the nature of sediment transport process and especially because parameter for calculating sediment transport is changeable due to time and space. The important variables to consider include: (1) hydrodynamic characteristics such as velocity, tidal fluctuation, and wave, and (2) sediment characteristics such as suspended sediment concentration, particle size, fall velocity, and sediment type (i.e., sand, silt, clay, etc.).

For understanding the behavior of a coastal area for construction of port or navigation channel or other important issues, it is compulsory to have plenty of data. Because the procedure of data collection is costly most of the time it is not possible to have enough data for this purpose. Nowadays for simulation of coastal area several computer codes have been used to overcome the sparsity of data and thus become more economical to study the behavior of the area.

1.3 Study Area

Sungai Padas is situated on the western coast of Sabah. The river mouth is about 15 km to the south-west of the town of Beaufort in Sabah which is about 90 km south of the Sabah state capital, Kota Kinabalu.

The Padas River is a relatively long river, about 200 km long, originating in the mountain in the middle of Sabah state and flowing into the South China Sea. The location of Padas estuary and origin of the river is presented in Figure 1.2.

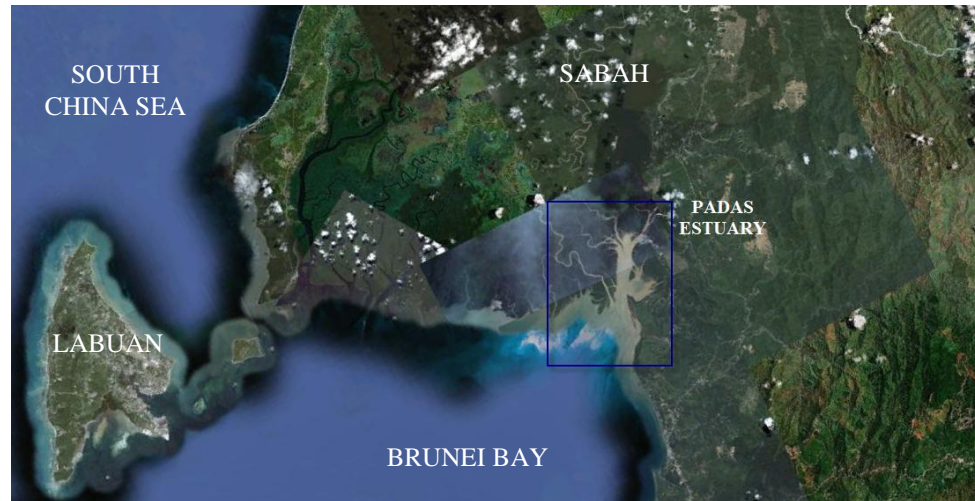


Figure 1.2: Study Area Location

The upper reaches of this 200 km river is one of the most popular destination for white water rafting (COEI, 2010). The lower reach passes through low lying marshy land that is inaccessible by land. The site location of Sungai Padas estuary and river system is illustrated in Figure 1.3 below. The upper reaches of Sungai Padas especially area close to Beaufort are prone to floods. The nearest town to Sungai Padas estuary is Weston. It is located 3 hours by road from Kota Kinabalu and 6 km from the river. From field observation, it is noted that the river mouth area is fringed by mangrove and other wetland species of fauna.

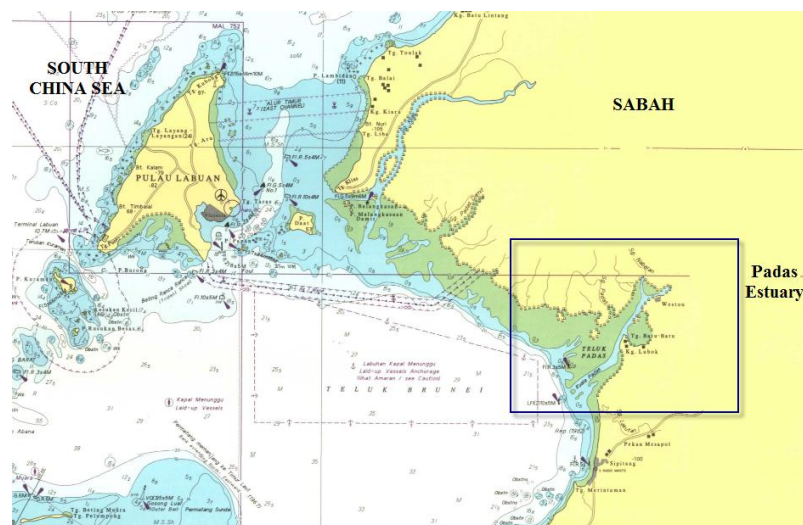


Figure 1.3 Location of the Sungai Padas estuary

1.4 Objectives of Study

The main objective of this study is to simulate the hydrodynamic and morphological behavior of the Padas estuary, by using a two dimensional computer code for numerical modeling. The specific objectives are described as follows:

- i. To apply, calibrate and run a two dimensional hydrodynamic computer code on Padas estuary and to use the result of the model to provide a better understanding of the estuarine hydrodynamics.
- ii. To find an approach and apply a two dimensional computer code to create a reliable and accurate model in order to describe the sediment transport behavior in the domain of study.

1.5 Scope of Study

The scope of this study can best be described as follows:

- i. To choose a suitable domain around Padas estuary for numerical modeling.
- ii. To construct the meshing elements for the domain using MATISSE programme.

- iii. To conduct the hydrodynamic modelling by using TELEMAC2D programme and calibrate the model by available field data.
- iv. To execute SISYPHE programme for the simulation of sediment transport.

1.6 Significance of Study

The findings from this study are expected to provide:

- The hydrodynamic characteristics such as velocity, water level and direction of flow at every time step.
- The sediment characteristics such as suspended load, bed load and bed evolution and by considering these parameters, the optimum location for navigation channel can be obtained.
- Considering the above, the optimum location for the proposed landing facility and alignment of the navigational channel could be determined. Thereupon the maintenance cost for navigation channel and jetty area may be reduced.